



## Technical Features



RAL 9016  
standard



Other colors  
on request



Range  
**Up to 13,8 ft**



Heating types  
**A : unheated**



Casing  
**Galvanised Steel**



Airflow / Length  
**1089 - 3914 cfm**  
**3,2 ft to 8,2 ft**



Heating capacity  
**-**



Grille type  
**Micro-perforated  
with prefilter function**



Fans  
**Centrifugal  
5-speed**



Control  
**Plug&Play manual regulator  
+ IR remote control**




Outlet lamellas  
**Aluminium, airfoil type  
Adjustable 0-15° each side**

RECESSED COMPACT air curtain is specially designed for non-heating applications. This recessed low profile model has a diffuser grille with an integral view, and a self-supporting frame for installation in false ceilings. Its design is characterized by providing a full view of the inlet and outlet slatted grille, which is maintenance-free and is completely integrated into a single frame colour RAL 9016 Other colours are available on request.

This air curtain model works with double-inlet centrifugal fans driven by an external rotor motor with low noise level. EC models assembled with very low consumption efficiency fans.

Includes Plug&Play control with 23ft RJ45 cable, infrared remote control and magnetic door contact.

CSA certified.

 UNHEATED 208V-1ph~60Hz

Model	Airflow	Ventilation power	Ventilation current	Noise level	Weight
	cfm	208V-1ph~60Hz kW	208V-1ph~60Hz A	(5 m) dB(A)	
CR M 1000 A	1089	0,221	1,07	54	72,8
CR M 1500 A	1633	0,332	1,61	55	110,2
CR M 2000 A	2177	0,442	2,14	56	134,5
CR M 2500 A	2722	0,553	2,68	57	149,9
CR G 1000 A	1368	0,332	1,61	56	81,6
CR G 1500 A	1824	0,442	2,14	57	121,3
CR G 2000 A	2737	0,663	3,21	58	156,5
CR G 2500 A	3193	0,774	3,75	59	172
CR ECG 1000 A	1589	0,319	2,79	60	81,6
CR ECG 1500 A	2119	0,425	3,72	61	123,5
CR ECG 2000 A	3178	0,638	5,58	62	156,5
CR ECG 2500 A	3708	0,744	6,51	63	172



✿ UNHEATED 240V-1ph~60Hz

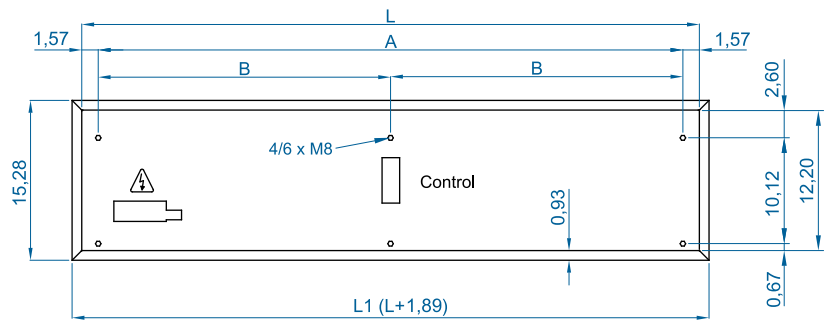
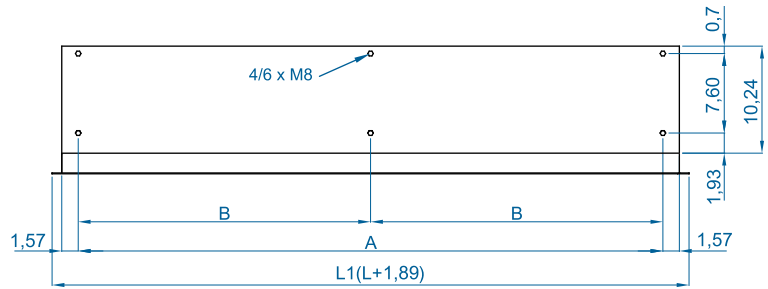
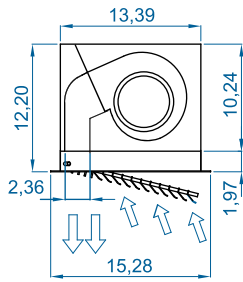
Model	Airflow	Ventilation power 240V-1ph~60Hz	Ventilation current 240V-1ph~60Hz	Noise level (5 m)	Weight
	cfm	kW	A	dB(A)	lb
CR M 1000 A	1177	0,263	1,10	55	72,8
CR M 1500 A	1766	0,395	1,65	56	110,2
CR M 2000 A	2354	0,526	2,20	57	134,5
CR M 2500 A	2943	0,658	2,75	58	149,9
CR G 1000 A	1457	0,395	1,65	57	81,6
CR G 1500 A	1942	0,526	2,20	58	121,3
CR G 2000 A	2913	0,789	3,30	59	156,5
CR G 2500 A	3399	0,921	3,85	60	172
CR ECG 1000 A	1677	0,381	2,94	61	81,6
CR ECG 1500 A	2236	0,508	3,92	62	123,5
CR ECG 2000 A	3354	0,762	5,88	63	156,5
CR ECG 2500 A	3914	0,889	6,86	64	172



Selection program



## Dimensions



	L	L1	A	B
RC 1000	39,37	41,26	36,22	-
RC 1500	59,06	60,94	55,91	27,95
RC 2000	78,74	80,63	75,59	37,79
RC 2500	98,43	100,31	95,28	47,64

CAD drawings, installation manuals  
and other documentation



## Optional accessories

### Supports and installation



Wall rail support  
SPWR



Silentblock supports  
SPANG-SIL / SLB



Suspension cables  
SPCT

### Control



IR Control  
✓ Included



Basic Control CA-5AW-IR  
✓ Included



Hand-Auto  
CH-5HW-NE



Interface kit  
IN-NE-II



RJ45 Cable  
✓ Included

### Sensors



Mechanical door contact  
MEC-DC



Magnetic  
door contact MAG-DC  
✓ Included