



AIR CURTAINS (A, E, P)

PVR 2026 Price List (EXW)

Valid from June 1, 2026 (R0 01/06/26)



INTRODUCTION



Airtècnics

Founded in 1986 and placed in Castellar del Vallès (Barcelona), Airtècnics has a large experience producing air curtains, air handling units, fan boxes, fan filter units, axial fans, centrifugal fans and other special and OEM equipment.

We export our products to more than 45 countries worldwide. Besides our own production, Airtècnics distributes a wide range of HVAC products, mostly produced by Rosenberg Group companies.

For decades, Airtècnics has been incorporating and innovating in technology for the production of air curtains, ventilation units, air purification devices and the rest of products of its catalogue.



Airtècnics headquarters in Castellar del Vallès (Spain)

Nowadays, we innovate in products that respond to the environmental hygiene needs that society is facing.

Loyal to our commitments regarding our customers, our products fulfill the highest standards of quality criteria.

We are proud of our highly qualified team composed by master engineers, designers, specialized technicians and skilled professionals, ready to assist you in any questions you may have in design, installation or service maintenance requirements.

Be sure that Airtècnics or our worldwide distributors network will give you the right solution for any air curtains application.

- Air curtains market leading
- Producing +35 years
- Exporting +45 countries
- Catalogue +20 languages
- Experimented R+D+i
- Continuous improving
- Complete range, all applications
- University knowledge collaboration

The Rosenberg Group

Airtècnics is from 1993 fully integrated in the Rosenberg Group, an organization specializing in the design, manufacturing and distribution of equipments and components of ventilation and air conditioning with factories, subsidiaries and agencies in more than 50 countries.

Founded in 1981, currently with a total of 1.700 employees, 13 production sites on all continents, as well as 4 development centres. Rosenberg develops, produces and distributes its products worldwide.

Through a combination of human knowhow and innovative production technology Rosenberg products achieve a quality that meets the highest requirements.



Rosenberg headquarters in Künzelsau (Germany)

Benefits of air curtains



Energy saving

- Reduces running cost and energy losses from the premises
- Reduce central plant capacity (heating/cooling)
- Reduces the CO2 emission
- Compliance with regulations and certifications



Commercial profitability

- Sales increase due to the "open door effect"
- Doorway acts as a showcase window
- Easy access for people using wheelchair, strollers or umbrellas
- Increases usable space available on entrances



Comfortable and healthy atmosphere

- Increases customers and staff comfort
- Helps maintain air quality and adequate environment
- Pest and insect control
- Barrier against dust, pollution, fumes and bad odours



Increased safety

- Increase visibility and avoid obstacles
- Easy evacuation through the exit doorway
- In cold rooms reduce misting, and prevents ice forming
- Act as a barrier against fire smoke (special application)

PROTECT FROM :

Heat and cold from outside

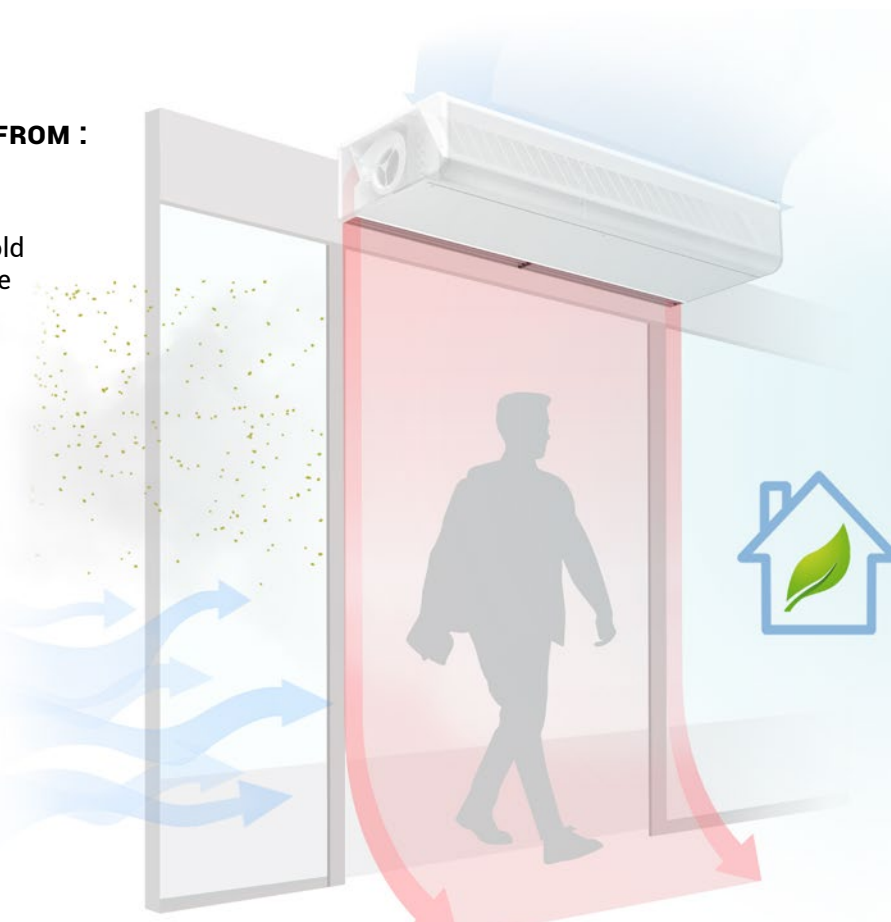
Airborne dust

Smoke and fumes

Pests and insects

Bad odours

Wind drafts



MAINTAIN:

Thermal comfort (heating /cooling)

Energy efficiency

Air quality and security

Commercial profitability

Visibility and accessibility

Compliance with regulations



Airtècnics air curtains

The new and attractive generation of Airtècnics air curtains are the ideal solution to maintain a comfortable interior climate in commercial outlets and public buildings that need to keep their doors open.

Airtècnics air curtains create an air stream layer over the doorway and act as an invisible barrier which efficiently divides the inside environment from the outside one. Therefore, it substantially reduces heating and cooling costs up to 80%, while increasing employees and clients comfort.

For shops, Airtècnics air curtains allow a clear view of the inside of the shop, welcoming the client to enter easily and freely.

The end result is more customers and an increase in sales. Airtècnics air curtains are a protection from the cold and heat, repel gusts of wind and minimize dust, fumes, pollution and insects entering the building.

In order to obtain these advantages it's very important to choose the appropriate air curtain. Factors such as interior pressure, strong winds, the door's location, stairs between floors, opposite doors, and the installation height have to be taken into consideration.

Our expert consultants with their extensive experience are at your disposal to help you choose.



Characteristics



Wide range: Whatever your application, we have an air curtain to suit it.

Control and regulation: Controls with attractive design and compact dimensions. Basic or sophisticated remote controls with manual or automatic functioning for energy saving applications. BMS interface. Controls can operate with devices as door contact, room thermostat, valves, anti-freezing sensor, etc.

Elegant and compact: Commercial models or decorative air curtains easy to match with any architectural interiors.

Finishes: Painted in any colour, different materials (stainless steel, wood, aluminium, etc.), different inlet grilles, etc.

Customization: Offer the possibility to brand an entrance with corporate logos or slogans, insert signs, clocks, lights, etc.

Low noise level: Our units offer a low noise level with higher performance. We use high quality fans and motors together with adequate regulation, specific geometry, etc.

Easy and quick installation: Minimum installation time with external Plug & Play connections. Threaded nuts assembled on the unit for easy fixing.

Reduced maintenance: Only regular cleaning.

Quality: 100% of the air curtains are tested and verified. Our products are marked CE, in compliance with the directives and applicable regulations.

Selection app: Airtècnics has developed exclusive software to help you select the right air curtain according to the specific characteristics and location of the installation.

Online calculator: Estimates the energy and economic savings resulting from the use of an efficient air curtain in a door.

Short delivery time: Our big stock of components allows us to guarantee a reduced delivery time for our standard products. Our flexible structure gives us the possibility to help our client on urgent projects.

Air curtains applications



Climate separation

First and foremost, air curtains are designed to prevent a climate area (heated or cooled) from the influx of outside air through an open doorway. The air curtains reduce energy costs by keeping heated or cooled air in the internal building atmosphere. Efficient air curtains will save up to 80% energy losses across a doorway compared with a door without air curtain.

During winter an air curtain creates a barrier that keeps out the cold air, while in summer the air stream keeps out the hot air from outside. Bearing in mind the energy saved, the average payback time for an air curtain is between 1 and 5 years depending on usage and climate conditions.



Cold storage

Due to big temperature differences, it is highly recommended to install air curtains to reduce the energy losses when the door is open. The higher the temperature difference between inside/outside is, the higher energy losses are when a door is unprotected, with consequent economic loss and possible loss of goods. And for workers, potentially dangerous situations are created due to slippery floors, ice formation or low visibility.

[Consult our separate catalogue "Air curtains for cold stores"](#)



Pest and flying insect control

Pest control in food business, whether in the food industry, warehouses or establishments selling packaged or table-top food products, is of great importance. Insect air curtains are used, when necessary to prevent flying insects from entering to buildings like food processing plants, bakeries, restaurants, hospitals or clean zones.

[Consult our separate catalogue "Air curtains for insect prevention"](#)

Air curtains selection

To select an air curtain the following factors have to be kept in mind:

- The height of the installation measured from the air curtain discharge outlet to the floor.
- The width of the door.
- The location of the building to determine the level of protection needed against weather conditions.
- If the building has several doors in the same, different or opposite facade.
- If the building has several stores connected by escalators.
- Pressure differences between the inside and outside of the building.
- Door characteristics: Always opened, automatic door, manual door, revolving door, etc.
- Characteristics of the ventilation and air conditioning installation.
- Voltage and electrical power availability.
- Type of business, style and decoration of the premises.

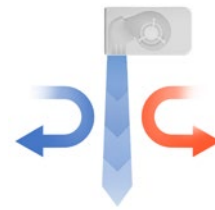
The selection of a wrong unit means the air jet won't reach the floor and the separation of two adjacent areas will disappear. Then all heated/cooled air will cross the doorway and energy savings and all other advantages will be lost. That makes it so, when factoring in heating costs, buying a cheap but inadequate model can cost more than buying a more expensive but optimal one. Another important point is customer satisfaction. For both business owners, workers and clients, a good air curtain is one that works well and achieves all the benefits listed in the previous sections.

For those reasons, it is important to choose an optimal air curtain, with the right specifications for the application. The following section, as well as a selection program in Airtècnics' website, will help you choose the right air curtain for you.

AIR CURTAINS MODELS

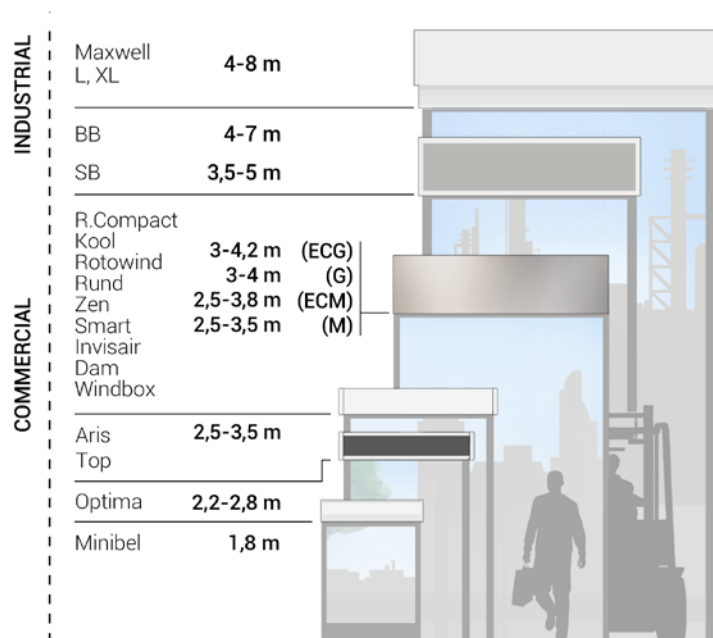


Selection Criteria



MODEL	FANS TYPE	HEIGHT RANGE	HEATING				COMMON APPLICATIONS
			A	E	P	DX	
Minibel		1,8 m	•	•			Kiosks, fast food and small sized places with usually closed door or automatic door when low pedestrian flow.
Optima Switch Recessed Optima Switch Optima Recessed Optima		2,2 - 2,8 m	•	•	•		Small and medium sized commercial doors with a medium pedestrian flow. Climate separation and protection against dust, fumes, and pollutants. Isolation and sealing of smoking areas.
Top Aris Recessed Aris		2,5 - 3,5 m	•	•	•		
Windbox Recessed Windbox Dam Recessed Dam Invisair Smart Zen Rund Rotowind Kool Recessed Compact	M ECM G ECG	2,5 - 3,5 m 2,5 - 3,8 m 3,0 - 4,0 m 3,0 - 4,2 m	• • • •	• • • •	• • • •	• • • •	Medium and large sized commercial doors with a high pedestrian flow. Climate separation and protection against dust, fumes, and pollutants. Isolation and sealing of smoking areas. Multiple installation and false ceiling configurations.
Windbox Recessed Windbox Invisair Zen Rotowind Kool	SB BB	3,5 - 5 m 5 - 7 m	• •	• •	• •	• •	Medium and large commercial and industrial doors with a high pedestrian flow. Climate separation and protection against dust, fumes, and pollutants. Isolation and sealing of smoking areas. Multiple installation and false ceiling configurations.
Windbox Zen	L LT XL XLT	4 - 5 m 4 - 6 m 5 - 7 m 5 - 8 m	• • • •	• • • •	• • • •	• • • •	Medium and large industrial doors. Climate separation and protection against dust, fumes, and pollutants. Isolation and sealing of smoking areas. Multiple installation configurations.
Maxwell	AC EC	4 - 6 m 5 - 8 m	• •	• •	• •		Large industrial doors (warehouses, hangars, factories, logistic centres or loading bays). Horizontal or vertical installation.

(A) Unheated, (E) Electric Heating, (P) Water Heating, (DX) Heat Pump



AIR CURTAINS MODELS



Model	Page	Model	Page
 MINIBEL Standard air curtains for small openings	<u>8</u>	 WINDBOX M,G High pressure standard air curtains for commercial doors	<u>16-18</u>
 OPTIMA SWITCH Standard air curtains for commercial doors	<u>9</u>	 RECESSED WINDBOX M,G High pressure recessed air curtains for commercial doors	<u>19-21</u>
 RECESSED OPTIMA SWITCH Recessed air curtains for commercial doors	<u>10</u>	 DAM High pressure standard air curtains for commercial doors	<u>22-24</u>
 OPTIMA Standard air curtains for commercial doors	<u>11</u>	 RECESSED DAM High pressure recessed air curtains for commercial doors	<u>25-27</u>
 RECESSED OPTIMA Recessed air curtains for commercial doors	<u>12</u>	 INVISAIR M,G High pressure recessed air curtains for commercial doors	<u>28-30</u>
 TOP Decorative air curtains for commercial doors	<u>13</u>	 SMART High pressure standard air curtains for commercial doors	<u>31-33</u>
 ARIS Standard air curtains for commercial doors	<u>14</u>	 ZEN M,G High pressure decorative air curtains for commercial doors	<u>34-35</u>
 RECESSED ARIS Recessed air curtains for commercial doors	<u>15</u>	 RUND High pressure decorative air curtains for commercial doors	<u>36-37</u>

AIR CURTAINS MODELS



Model	Page	Model	Page
 <p>ROTOWIND G High pressure tailor made air curtains for revolving doors</p>	<u>38-39</u>	 <p>KOOL SB-BB High pressure recessed air curtains for commercial and industrial doors</p>	<u>52</u>
 <p>KOOL M,G High pressure standard air curtains for commercial and industrial doors</p>	<u>40</u>	 <p>WINDBOX L,XL High pressure industrial air curtains for industrial doors</p>	<u>53-54</u>
 <p>RECESSED COMPACT High pressure recessed air curtains for commercial and industrial doors</p>	<u>41</u>	 <p>MAXWELL High pressure air curtains for large industrial doors</p>	<u>55-57</u>
 <p>WINDBOX SB-BB High pressure standard air curtains for commercial and industrial doors</p>	<u>42-43</u>	 <p>OPTIMA K Small compact model recommended for small cold store doors.</p>	<u>58</u>
 <p>RECESSED WINDBOX SB-BB High pressure recessed air curtains for commercial and industrial doors</p>	<u>44-45</u>	 <p>TWIN KOOL Double jet solution that generates a separation zone at the door. Ideal for freezers.</p>	<u>59</u>
 <p>INVISAIR SB-BB High pressure recessed air curtains for commercial and industrial doors</p>	<u>46-47</u>	 <p>TWIN KPL Double jet solution that generates a separation zone at the door. Ideal for freezers</p>	<u>60</u>
 <p>ZEN SB-BB High pressure decorative air curtains for commercial and industrial doors</p>	<u>48-49</u>	 <p>TRIOJET SYSTEM High efficiency air curtains system with triple jet specially designed to be installed on large industrial freezers.</p>	<u>61</u>
 <p>ROTOWIND SB-BB High pressure tailor made air curtains for revolving doors</p>	<u>50-51</u>	 <p>COMPACT FLY Recommended to reduce the passage of insects in service windows or small openings.</p>	<u>62</u>

AIR CURTAINS MODELS



Model Page



FLY K [63](#)

Compact and sleek design for service doors up to 2 metres high, and customer entrances.



FLY KSB [64](#)

Insect control high power and efficiency models.



FLY KBB [65](#)

Insect control high power and efficiency models.



FLY KL [66](#)

Insect control high power and efficiency models.



FLY KXL [67](#)

Insect control high power and efficiency models.



AIRTRACK [68](#)

Air curtains for refrigerated vehicle doors.



Characteristics



- Self-supporting casing construction made of galvanized steel plate, finished in structural epoxy-polyester painting white colour RAL9016 as standard. Other colours are available on request.
- Anodized aluminium outlet vanes, airfoil shaped.
- Compact axial fans, low noise level.
- “E” type with electrical shielded element. “A” type without heating, air only.
- Integrated switch for ventilation and heating control.
- Cable connection 1,5m length, integrated.
- Wall support included.

Specifications

Unheated				
Model	Nominal Airflow (m³/h)		Recommended Installation Range (m)	Price (€)
MIN EC 600 A	600		2	455,00
MIN EC 900 A	900		2	572,00
MIN 600 A	420		1,8	428,00
MIN 900 A	630		1,8	526,00

Electrical Heating				
Model	Nominal Airflow (m³/h)	Electrical Heating Capacity 230Vx1 (kW)	Recommended Installation Range (m)	Price (€)
MIN EC 600 E230	600	2.5	2	568,00
MIN EC 900 E230	900	3.2	2	683,00
MIN 600 E230	420	2,5	1,8	544,00
MIN 900 E230	630	3,2	1,8	640,00

Characteristics



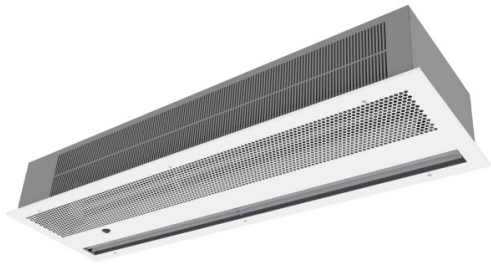
- Self-supporting casing construction made of galvanized steel plate, finished in structural epoxy-polyester painting white colour RAL9016 as standard. Other colours are available on request.
- Micro-perforated inlet grille with filter functions and easy service. It does not need prefilter.
- Anodized aluminium outlet vanes, airfoil shaped.
- Low noise twisted cross-flow fans driven by a 2-speed external rotor motor.
- "A" type without heating, air only.
- Includes 2-speed in-built switch.
- Allows door contact and external OFF connection.

Specifications

Unheated			
Model	Nominal Airflow (m ³ /h)	Recommended Installation Range (m)	Price (€)
OPT SW 1000 A	1500	2.8	1.017,00
OPT SW 1500 A	2150	2.8	1.222,00
OPT SW 2000 A	2900	2.8	1.774,00



Characteristics



- Self-supporting casing construction made of galvanized steel plate, ready to be installed recessed in a false ceiling.
- Inlet grille (free of maintenance) integrated in a single white frame colour RAL 9016 or black RAL 9005. Other colours are available on request.
- Anodized aluminium outlet vanes, airfoil shaped.
- Low noise twisted cross-flow fans driven by a 2-speed external rotor motor.
- "A" type without heating, air only.
- Includes 2-speed in-built switch.
- Allows door contact and external OFF connection.

Specifications

Unheated			
Model	Nominal Airflow (m ³ /h)	Recommended Installation Range (m)	Price (€)
RO SW 1000 A	1700	2.8	1.039,00
RO SW 1500 A	2200	2.8	1.245,00
RO SW 2000 A	3200	2.8	1.906,00



Characteristics



- Self-supporting casing construction made of galvanized steel plate, finished in structural epoxy-polyester painting white colour RAL9016 as standard. Other colours are available on request.
- Micro-perforated inlet grille with filter functions and easy service. It does not need prefilter.
- Anodized aluminium outlet vanes, airfoil shaped.
- Low noise twisted cross-flow fans driven by a 2-speed external rotor motor.
- "P" type with water heated coil and integrated regulation for ON/OFF or three stages 0-10V proportional valve. "E" type with electrical shielded elements, three stages with integrated regulation. "A" type without heating, air only.
- Advanced Plug&Play control. Includes: Advanced PRO control with LCD display and integrated thermostat, door contact, 7m RJ11 cable and remote control.
Optional: intelligent Clever Pro Control (automatic, programmable, ModBus for PKC, timer, etc.)

Specifications

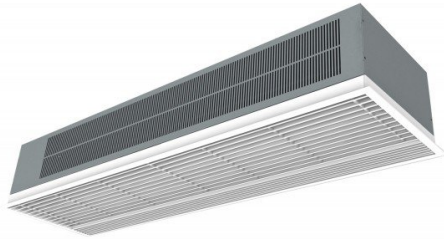
Unheated			
Model	Nominal Airflow (m³/h)	Recommended Installation Range (m)	Price (€)
OPT 1000 A	1500	2,2-2,8	1.104,00
OPT 1500 A	2150	2,2-2,8	1.300,00
OPT 2000 A	2900	2,2-2,8	1.857,00

Electrical Heating					
Model	Nominal Airflow (m³/h)	Electrical Heating Capacity 230Vx1 (kW)	Electrical Heating Capacity 400Vx3 (kW)	Recommended Installation Range (m)	Price (€)
OPT 1000 E	1500	-	1,9/3,8/5,6	2,2-2,8	1.459,00
OPT 1000 E-9	1500	-	3/6/9	2,2-2,8	1.601,00
OPT 1000 E230	1500	1,9/3,8/5,6	-	2,2-2,8	1.459,00
OPT 1500 E	2150	-	3/6/9	2,2-2,8	1.712,00
OPT 1500 E230-6	2150	1,9/3,8/5,6	-	2,2-2,8	1.712,00
OPT 1500 E230-9	2150	3/6/9	-	2,2-2,8	1.819,00
OPT 2000 E	2900	-	3,8/7,5/11,3	2,2-2,8	2.679,00
OPT 2000 E230	2900	3,8/7,5/11,3	-	2,2-2,8	2.730,00

Water Heating				
Model	Nominal Airflow (m³/h)	Heating Capacity 80/60°C (kW)	Recommended Installation Range (m)	Price (€)
OPT 1500 P64	2050	-	2,2-2,8	1.798,00
OPT 2000 P64	2600	-	2,2-2,8	2.592,00
OPT 1000 P86	1400	8,20	2,2-2,8	1.485,00
OPT 1500 P86	2100	12,7	2,2-2,8	1.879,00
OPT 2000 P86	2750	16,7	2,2-2,8	2.574,00



Characteristics



- Self-supporting casing construction made of galvanized steel plate, ready to be installed recessed in a false ceiling.
- Inlet grille (free of maintenance) made with aluminium profiles and blow-out nozzle, integrated in a single white frame colour RAL 9016. Other colours are available on request.
- Anodized aluminium outlet vanes, airfoil shaped.
- Low noise twisted cross-flow fans driven by a 2-speed external rotor motor.
- "P" type with water heated coil and integrated regulation for ON/OFF or three stages 0-10V proportional valve. "E" type with electrical shielded elements, three stages with integrated regulation. "A" type without heating, air only.
- Advanced Plug&Play control. Includes: Advanced PRO control with LCD display and integrated thermostat, door contact, 7m RJ11 cable and remote control.
Optional: intelligent Clever Pro Control (automatic, programmable, ModBus for PKC, timer, etc.)

Specifications

Unheated			
Model	Nominal Airflow (m³/h)	Recommended Installation Range (m)	Price (€)
RO 1000 A	1700	2,2-2,8	1.462,00
RO 1500 A	2200	2,2-2,8	1.699,00
RO 2000 A	3200	2,2-2,8	2.319,00

Electrical Heating					
Model	Nominal Airflow (m³/h)	Electrical Heating Capacity 230Vx1 (kW)	Electrical Heating Capacity 400Vx3 (kW)	Recommended Installation Range (m)	Price (€)
RO 1000 E	1700	-	1,9/3,8/5,6	2,2-2,8	1.820,00
RO 1000 E-9	1700	-	3/6/9	2,2-2,8	1.960,00
RO 1000 E230	1700	1,9/3,8/5,6	-	2,2-2,8	1.820,00
RO 1500 E	2200	-	3/6/9	2,2-2,8	2.107,00
RO 1500 E230-6	2200	1,9/3,8/5,6	-	2,2-2,8	2.107,00
RO 1500 E230-9	2200	3/6/9	-	2,2-2,8	2.217,00
RO 2000 E	3200	-	3,8/7,5/11,3	2,2-2,8	3.096,00
RO 2000 E230	3200	3,8/7,5/11,3	-	2,2-2,8	3.096,00

Water Heating				
Model	Nominal Airflow (m³/h)	Heating Capacity 80/60°C (kW)	Recommended Installation Range (m)	Price (€)
RO 1000 P64	1400	-	2,2-2,8	1.860,00
RO 1500 P64	2100	-	2,2-2,8	2.213,00
RO 2000 P64	2700	-	2,2-2,8	2.986,00
RO 1000 P86	1450	8,30	2,2-2,8	1.842,00
RO 1500 P86	2175	13	2,2-2,8	2.196,00
RO 2000 P86	2850	17,1	2,2-2,8	2.969,00



Characteristics

top



- Innovative concept of decorative air curtain based on a recessed model to be installed free-hanging.
- Smooth front panel can be customized with logotypes, lighting, lettering or safety and informative signals, according to the client requirements.
- Self-supporting casing construction made of galvanized steel plate painted in grey RAL9006. Other colours are available on request.
- Inlet and Outlet inbuilt in the same grid painted in white RAL9016. Other colours are available on request.
- Anodized aluminium outlet vanes, airfoil shaped.
- Low noise twisted cross-flow fans driven by a 2-speed external rotor motor.
- "P" type with water heated coil and integrated regulation for ON/OFF or three stages 0-10V proportional valve. "E" type with electrical shielded elements, three stages with integrated regulation. "A" type without heating, air only.
- Advanced Plug&Play control. Includes: Advanced PRO control with LCD display and integrated thermostat, door contact, 7m and remote control. With integrated functions: door delay (configurable); interface mode; operation, alarm and maintenance warning signals; and multiple digital inputs that modify the air curtain's operation.
- Includes protective varnish for the electronic board and control.
- Optional:
 - Auxiliary temperature sensors that improve air curtain control and increase energy savings.
 - Clever PRO intelligent control (automatic, programmable, ModBus via PLC, timer, etc.) with an additional temperature sensor.

Specifications

Unheated				
Model	Nominal Airflow (m³/h)		Recommended Installation Range (m)	Price (€)
TOP 1000 A	1900		3.5	1.558,00
TOP 1500 A	2800		3.5	1.972,00
TOP 2000 A	3800		3.5	2.624,00

Electrical Heating				
Model	Nominal Airflow (m³/h)	Electrical Heating Capacity 400Vx3 (kW)	Recommended Installation Range (m)	Price (€)
TOP 1000 E	1800	3/6/9	3.5	2.030,00
TOP 1500 E	2650	4/8/12	3.5	2.661,00
TOP 2000 E	3600	6/12/18	3.5	3.584,00

Water Heating				
Model	Nominal Airflow (m³/h)	Heating Capacity 80/60°C (kW)	Recommended Installation Range (m)	Price (€)
TOP 1000 P86	1750	9,28	3.5	1.818,00
TOP 1500 P86	2400	13,65	3.5	2.290,00
TOP 2000 P86	3500	19,26	3.5	3.088,00
TOP 1000 P64	1600	-	3.5	1.855,00
TOP 1500 P64	2200	-	3.5	2.359,00
TOP 2000 P64	3200	-	3.5	3.105,00



Characteristics



- Stylish, discreet and contemporary design adaptive to any interior architecture.
- Smooth front panel can be customized with logotypes, lighting, lettering or safety and informative signals, according to the client requirements.
- Self-supporting steel rounded casing with edgeless plastic side covers, finished in structural epoxy-polyester painting white colour RAL9016 as standard. Other colours are available on request.
- Hidden top air entrance, avoiding the inside view of the unit and the inlet grille.
- Anodized aluminium outlet vanes, airfoil shaped.
- Low noise twisted cross-flow fans driven by a 2-speed external rotor motor.
- "P" type with water heated coil and integrated regulation for ON/OFF or three stages 0-10V proportional valve. "E" type with electrical shielded elements, three stages with integrated regulation. "A" type without heating, air only.
- Advanced Plug&Play control. Includes: Advanced PRO control with LCD display and integrated thermostat, door contact, 7m RJ11 cable and remote control. Optional: intelligent Clever Pro Control (automatic, programmable, ModBus for PKC, timer, etc.)

Specifications

Unheated			
Model	Nominal Airflow (m³/h)	Recommended Installation Range (m)	Price (€)
ARIS 1000 A	1900	2,5-3,5	1.397,00
ARIS 1500 A	2800	2,5-3,5	1.872,00
ARIS 2000 A	3800	2,5-3,5	2.270,00

Electrical Heating				
Model	Nominal Airflow (m³/h)	Electrical Heating Capacity 400Vx3 (kW)	Recommended Installation Range (m)	Price (€)
ARIS 1000 E	1800	3/6/9	2,5-3,5	1.986,00
ARIS 1500 E	2800	4/8/12	2,5-3,5	2.613,00
ARIS 2000 E	3600	6/12/18	2,5-3,5	3.206,00

Water Heating					
Model	Nominal Airflow (m³/h)	Heating Capacity 80/60°C (kW)	Heating Capacity 60/40°C (kW)	Recommended Installation Range (m)	Price (€)
ARIS 1000 P86	1750	9,28	-	2,5-3,5	1.669,00
ARIS 1500 P86	2625	14,44	-	2,5-3,5	2.210,00
ARIS 2000 P86	3500	19,26	-	2,5-3,5	2.697,00
ARIS 1000 P64	1600	-	6,99	2,5-3,5	1.711,00
ARIS 1500 P64	2350	-	10,59	2,5-3,5	2.281,00
ARIS 2000 P64	3200	-	14,31	2,5-3,5	2.700,00



Characteristics



- Self-supporting casing construction made of galvanized steel plate, ready to be installed recessed in a false ceiling.
- It has both internal and external fixings. Electrical and electronic connections inside.
- Inlet grille (free of maintenance) made with aluminium profiles and blow-out nozzle, integrated in a single white frame colour RAL 9016. Other colours are available on request.
- Anodized aluminium outlet vanes, airfoil shaped.
- Low noise twisted cross-flow fans driven by a 2-speed external rotor motor.
- "P" type with water heated coil and integrated regulation for ON/OFF or three stages 0-10V proportional valve. "E" type with electrical shielded elements, three stages with integrated regulation. "A" type without heating, air only.
- Advanced Plug&Play control. Includes: Advanced PRO control with LCD display and integrated thermostat, door contact, 7m and remote control. With integrated functions: door delay (configurable); interface mode; operation, alarm and maintenance warning signals; and multiple digital inputs that modify the air curtain's operation.
- Includes protective varnish for the electronic board and control.
- Optional:
 - Auxiliary temperature sensors that improve air curtain control and increase energy savings.
 - Clever PRO intelligent control (automatic, programmable, ModBus via PLC, timer, etc.) with an additional temperature sensor.

Specifications

Unheated				
Model	Nominal Airflow (m³/h)	Recommended Installation Range (m)		Price (€)
RA 1000 A	1900	2,5-3,5		1.752,00
RA 1500 A	2800	2,5-3,5		2.219,00
RA 2000 A	3800	2,5-3,5		2.696,00

Electrical Heating				
Model	Nominal Airflow (m³/h)	Electrical Heating Capacity 400Vx3 (kW)	Recommended Installation Range (m)	Price (€)
RA 1000 E	1800	3/6/9	2,5-3,5	2.282,00
RA 1500 E	2650	4/8/12	2,5-3,5	2.993,00
RA 2000 E	3600	6/12/18	2,5-3,5	3.685,00

Water Heating					
Model	Nominal Airflow (m³/h)	Heating Capacity 80/60°C (kW)	Heating Capacity 60/40°C (kW)	Recommended Installation Range (m)	Price (€)
RA 1000 P86	1750	9.28	-	2,5-3,5	2.045,00
RA 1500 P86	2400	13.65	-	2,5-3,5	2.575,00
RA 2000 P86	3500	19.26	-	2,5-3,5	3.062,00
RA 1000 P64	1600	-	6.99	2,5-3,5	2.088,00
RA 1500 P64	2200	-	10.16	2,5-3,5	2.654,00
RA 2000 P64	3200	-	14.31	2,5-3,5	3.078,00



Characteristics



- Self-supporting casing construction made of galvanized steel plate, finished in structural epoxy-polyester painting white colour RAL9016 as standard. Other colours or stainless steel are available on request.
- Micro-perforated inlet grille with filter functions and easy service. It does not need prefilter.
- Anodized aluminium outlet vanes, airfoil shaped, adjustable from 0 to 15° each side.
- Low noise double-inlet centrifugal fans with external rotor motor. 5-speed controller. EC models assembled with very low consumption efficiency fans.
- “P” type with water heated coil. “E” type with electrical shielded elements, three stages with integrated regulation. “A” type without heating, air only. Optional expansion DX coil.
- Advanced Plug&Play control. Includes: Advanced PRO control with LCD display and integrated thermostat, door contact, 7m RJ11 cable and remote control. Optional: intelligent Clever Pro Control (automatic, programmable, ModBus for PKC, timer, etc.)

Specifications

Unheated				
Model	Nominal Airflow (m³/h)	Recommended Installation Range (m)	Price (€)	
M 1000 A	1800	2,5-3,5	1.853,00	
M 1500 A	2700	2,5-3,5	2.278,00	
M 2000 A	3600	2,5-3,5	2.781,00	
M 2500 A	4500	2,5-3,5	3.496,00	
M 3000 A	5400	2,5-3,5	4.832,00	
ECM 1000 A	1840	2,5-3,8	2.195,00	
ECM 1500 A	2760	2,5-3,8	2.781,00	
ECM 2000 A	3680	2,5-3,8	3.456,00	
ECM 2500 A	4600	2,5-3,8	4.327,00	
ECM 3000 A	5520	2,5-3,8	5.853,00	
G 1000 A	2400	3-4	2.213,00	
G 1500 A	3200	3-4	2.578,00	
G 2000 A	4800	3-4	3.351,00	
G 2500 A	5600	3-4	4.061,00	
G 3000 A	6400	3-4	5.374,00	
ECG 1000 A	2700	3-4,2	2.600,00	
ECG 1500 A	3600	3-4,2	3.185,00	
ECG 2000 A	5400	3-4,2	4.261,00	
ECG 2500 A	6300	3-4,2	5.149,00	
ECG 3000 A	7200	3-4,2	6.652,00	

Electrical Heating				
Model	Nominal Airflow (m³/h)	Electrical Heating Capacity 400Vx3 (kW)	Recommended Installation Range (m)	Price (€)
M 1000 E	1800	3/6/9	2,5-3,5	2.950,00
M 1500 E	2700	4/8/12	2,5-3,5	3.486,00
M 2000 E	3600	6/12/18	2,5-3,5	4.157,00
M 2500 E	4500	6/12/18	2,5-3,5	5.281,00
M 3000 E	5400	8/16/24	2,5-3,5	7.264,00
ECM 1000 E	1840	3/6/9	2,5-3,8	3.304,00
ECM 1500 E	2760	4/8/12	2,5-3,8	4.008,00



Electrical Heating				
Model	Nominal Airflow (m³/h)	Electrical Heating Capacity 400Vx3 (kW)	Recommended Installation Range (m)	Price (€)
ECM 2000 E	3680	6/12/18	2,5-3,8	4.856,00
ECM 2500 E	4600	6/12/18	2,5-3,8	6.140,00
ECM 3000 E	5520	8/16/24	2,5-3,8	8.343,00
G 1000 E	2400	5/10/15	3-4	3.307,00
G 1500 E	3200	7,5/15/22,5	3-4	3.875,00
G 2000 E	4800	10/20/30	3-4	5.215,00
G 2500 E	5600	10/20/30	3-4	6.462,00
G 3000 E	6400	10/20/30	3-4	7.979,00
ECG 1000 E	2700	5/10/15	3-4,2	3.764,00
ECG 1500 E	3600	7,5/15/22,5	3-4,2	4.511,00
ECG 2000 E	5400	10/20/30	3-4,2	6.158,00
ECG 2500 E	6300	10/20/30	3-4,2	7.594,00
ECG 3000 E	7200	10/20/30	3-4,2	9.309,00

Water Heating						
Model	Nominal Airflow (m³/h)	Recommended Installation Range (m)	Heating Capacity 80/60°C (kW)	Heating Capacity 60/40°C (kW)	Heating Capacity 50/40°C (kW)	Price (€)
M 1000 P64	1660	2,5-3,5	-	8,56	-	2.324,00
M 1000 P54	1660	2,5-3,5	-	-	8,52	2.483,00
M 1000 P86	1660	2,5-3,5	9,17	-	-	2.219,00
M 1500 P64	2490	2,5-3,5	-	13,69	-	2.874,00
M 1500 P54	2490	2,5-3,5	-	-	14,34	3.015,00
M 1500 P86	2490	2,5-3,5	14,26	-	-	2.753,00
M 2000 P64	3320	2,5-3,5	-	18,26	-	3.546,00
M 2000 P54	3320	2,5-3,5	-	-	18,65	3.754,00
M 2000 P86	3320	2,5-3,5	20,65	-	-	3.344,00
M 2500 P64	4150	2,5-3,5	-	22,12	-	4.633,00
M 2500 P54	4150	2,5-3,5	-	-	24,32	4.940,00
M 2500 P86	4150	2,5-3,5	26,92	-	-	4.361,00
M 3000 P64	4980	2,5-3,5	-	28,37	-	6.355,00
M 3000 P54	4980	2,5-3,5	-	-	29,77	6.710,00
M 3000 P86	4980	2,5-3,5	33,24	-	-	5.985,00
ECM 1000 P64	1720	2,5-3,8	-	8,77	-	2.652,00
ECM 1000 P54	1720	2,5-3,8	-	-	8,74	2.816,00
ECM 1000 P86	1720	2,5-3,8	9,38	-	-	2.551,00
ECM 1500 P64	2580	2,5-3,8	-	14,02	-	3.452,00
ECM 1500 P54	2580	2,5-3,8	-	-	14,71	3.483,00
ECM 1500 P86	2580	2,5-3,8	14,58	-	-	3.216,00
ECM 2000 P64	3440	2,5-3,8	-	18,7	-	4.182,00
ECM 2000 P54	3440	2,5-3,8	-	-	19,13	4.390,00
ECM 2000 P86	3440	2,5-3,8	21,12	-	-	3.974,00
ECM 2500 P64	4300	2,5-3,8	-	23,33	-	5.582,00
ECM 2500 P54	4300	2,5-3,8	-	-	24,95	5.754,00
ECM 2500 P86	4300	2,5-3,8	27,53	-	-	5.167,00
ECM 3000 P64	5160	2,5-3,8	-	29,05	-	7.377,00
ECM 3000 P54	5160	2,5-3,8	-	-	30,54	7.743,00
ECM 3000 P86	5160	2,5-3,8	33,99	-	-	7.001,00
G 1000 P64	2250	3-4	-	10,42	-	2.622,00



Model	Water Heating					Price (€)
	Nominal Airflow (m³/h)	Recommended Installation Range (m)	Heating Capacity 80/60°C (kW)	Heating Capacity 60/40°C (kW)	Heating Capacity 50/40°C (kW)	
G 1000 P54	2250	3-4	-	-	10,56	2.777,00
G 1000 P86	2250	3-4	11,04	-	-	2.518,00
G 1500 P64	3000	3-4	-	15,47	-	3.132,00
G 1500 P54	3000	3-4	-	-	16,37	3.280,00
G 1500 P86	3000	3-4	16,02	-	-	3.015,00
G 2000 P64	4500	3-4	-	22,29	-	4.078,00
G 2000 P54	4500	3-4	-	-	23,15	4.232,00
G 2000 P86	4500	3-4	24,92	-	-	3.874,00
G 2500 P64	5250	3-4	-	26,61	-	5.170,00
G 2500 P54	5250	3-4	-	-	28,76	5.475,00
G 2500 P86	5250	3-4	31,16	-	-	4.890,00
G 3000 P64	6000	3-4	-	32,1	-	6.868,00
G 3000 P54	6000	3-4	-	-	34,03	7.225,00
G 3000 P86	6000	3-4	37,35	-	-	6.502,00
ECG 1000 P64	2550	3-4,2	-	11,27	-	3.065,00
ECG 1000 P54	2550	3-4,2	-	-	11,5	3.224,00
ECG 1000 P86	2550	3-4,2	11,89	-	-	2.959,00
ECG 1500 P64	3400	3-4,2	-	16,77	-	3.740,00
ECG 1500 P54	3400	3-4,2	-	-	17,86	3.887,00
ECG 1500 P86	3400	3-4,2	17,29	-	-	3.618,00
ECG 2000 P64	5100	3-4,2	-	24,14	-	4.991,00
ECG 2000 P54	5100	3-4,2	-	-	25,24	5.345,00
ECG 2000 P86	5100	3-4,2	26,86	-	-	4.780,00
ECG 2500 P64	5950	3-4,2	-	28,84	-	6.269,00
ECG 2500 P54	5950	3-4,2	-	-	31,38	6.743,00
ECG 2500 P86	5950	3-4,2	33,63	-	-	5.984,00
ECG 3000 P64	6800	3-4,2	-	34,81	-	8.175,00
ECG 3000 P54	6800	3-4,2	-	-	37,16	8.539,00
ECG 3000 P86	6800	3-4,2	40,34	-	-	7.795,00



Characteristics



- Self-supporting casing construction made of galvanized steel plate, ready to be installed recessed in a false ceiling.
- Inlet grille (free of maintenance) made with aluminium profiles and blow-out nozzle, integrated in a single white frame colour RAL 9016. Other colours are available on request.
- Anodized aluminium outlet vanes, airfoil shaped, adjustable in both directions.
- Low noise double-inlet centrifugal fans with external rotor motor. 5-speed controller. EC models assembled with very low consumption efficiency fans.
- “P” type with water heated coil. “E” type with electrical shielded elements, three stages with integrated regulation. “A” type without heating, air only. Optional expansion DX coil.
- Advanced Plug&Play control. Includes: Advanced PRO control with LCD display and integrated thermostat, door contact, 7m RJ11 cable and remote control. Optional: intelligent Clever Pro Control (automatic, programmable, ModBus for PKC, timer, etc.)

Specifications

Model	Unheated			Price (€)
	Nominal Airflow (m³/h)	Recommended Installation Range (m)		
RM 1000 A	1800	2,5-3,5		2.510,00
RM 1500 A	2700	2,5-3,5		3.098,00
RM 2000 A	3600	2,5-3,5		3.553,00
RM 2500 A	4500	2,5-3,5		4.171,00
RECM 1000 A	1840	2,5-3,8		2.853,00
RECM 1500 A	2760	2,5-3,8		3.605,00
RECM 2000 A	3680	2,5-3,8		4.213,00
RECM 2500 A	4600	2,5-3,8		4.979,00
RG 1000 A	2400	3-4		2.798,00
RG 1500 A	3200	3-4		3.382,00
RG 2000 A	4800	3-4		4.092,00
RG 2500 A	5600	3-4		4.699,00
RECG 1000 A	2700	3-4,2		3.255,00
RECG 1500 A	3600	3-4,2		3.988,00
RECG 2000 A	5400	3-4,2		5.070,00
RECG 2500 A	6300	3-4,2		5.799,00

Model	Electrical Heating			Price (€)
	Nominal Airflow (m³/h)	Electrical Heating Capacity 400Vx3 (kW)	Recommended Installation Range (m)	
RM 1000 E	1800	3/6/9	2,5-3,5	3.575,00
RM 1500 E	2700	4/8/12	2,5-3,5	4.276,00
RM 2000 E	3600	6/12/18	2,5-3,5	4.893,00
RM 2500 E	4500	6/12/18	2,5-3,5	5.898,00
RECM 1000 E	1840	3/6/9	2,5-3,8	3.935,00
RECM 1500 E	2760	4/8/12	2,5-3,8	4.798,00
RECM 2000 E	3680	6/12/18	2,5-3,8	5.573,00
RECM 2500 E	4600	6/12/18	2,5-3,8	6.739,00
RG 1000 E	2400	5/10/15	3-4	3.916,00
RG 1500 E	3200	7,5/15/22,5	3-4	4.623,00
RG 2000 E	4800	10/20/30	3-4	5.906,00
RG 2500 E	5600	10/20/30	3-4	7.038,00



Electrical Heating				
Model	Nominal Airflow (m³/h)	Electrical Heating Capacity 400Vx3 (kW)	Recommended Installation Range (m)	Price (€)
RECG 1000 E	2700	5/10/15	3-4,2	4.375,00
RECG 1500 E	3600	7,5/15/22,5	3-4,2	5.243,00
RECG 2000 E	5400	10/20/30	3-4,2	6.827,00
RECG 2500 E	6300	10/20/30	3-4,2	8.132,00

Water Heating						
Model	Nominal Airflow (m³/h)	Recommended Installation Range (m)	Heating Capacity 80/60°C (kW)	Heating Capacity 60/40°C (kW)	Heating Capacity 50/40°C (kW)	Price (€)
RM 1000 P64	1660	2,5-3,5	-	8,56	-	2.971,00
RM 1000 P54	1660	2,5-3,5	-	-	8,52	3.123,00
RM 1000 P86	1660	2,5-3,5	9,17	-	-	2.866,00
RM 1500 P64	2490	2,5-3,5	-	13,69	-	3.675,00
RM 1500 P54	2490	2,5-3,5	-	-	14,34	3.818,00
RM 1500 P86	2490	2,5-3,5	14,26	-	-	3.559,00
RM 2000 P64	3320	2,5-3,5	-	18,26	-	4.294,00
RM 2000 P54	3320	2,5-3,5	-	-	18,65	4.392,00
RM 2000 P86	3320	2,5-3,5	20,65	-	-	4.098,00
RM 2500 P64	4150	2,5-3,5	-	22,12	-	5.272,00
RM 2500 P54	4150	2,5-3,5	-	-	24,32	5.440,00
RM 2500 P86	4150	2,5-3,5	26,92	-	-	5.003,00
RECM 1000 P64	1720	2,5-3,8	-	8,77	-	3.302,00
RECM 1000 P54	1720	2,5-3,8	-	-	8,74	3.459,00
RECM 1000 P86	1720	2,5-3,8	9,38	-	-	3.201,00
RECM 1500 P64	2580	2,5-3,8	-	14,02	-	4.141,00
RECM 1500 P54	2580	2,5-3,8	-	-	14,71	4.287,00
RECM 1500 P86	2580	2,5-3,8	14,58	-	-	4.021,00
RECM 2000 P64	3440	2,5-3,8	-	18,7	-	4.922,00
RECM 2000 P54	3440	2,5-3,8	-	-	19,13	5.246,00
RECM 2000 P86	3440	2,5-3,8	21,12	-	-	4.721,00
RECM 2500 P64	4300	2,5-3,8	-	23,33	-	6.068,00
RECM 2500 P54	4300	2,5-3,8	-	-	24,95	6.519,00
RECM 2500 P86	4300	2,5-3,8	27,53	-	-	5.795,00
RG 1000 P64	2250	3-4	-	10,42	-	3.253,00
RG 1000 P54	2250	3-4	-	-	10,56	3.399,00
RG 1000 P86	2250	3-4	11,04	-	-	3.149,00
RG 1500 P64	3000	3-4	-	15,47	-	3.924,00
RG 1500 P54	3000	3-4	-	-	16,37	4.063,00
RG 1500 P86	3000	3-4	16,02	-	-	3.809,00
RG 2000 P64	4500	3-4	-	22,29	-	4.794,00
RG 2000 P54	4500	3-4	-	-	23,15	4.861,00
RG 2000 P86	4500	3-4	24,92	-	-	4.602,00
RG 2500 P64	5250	3-4	-	26,61	-	5.779,00
RG 2500 P54	5250	3-4	-	-	28,76	5.919,00
RG 2500 P86	5250	3-4	31,16	-	-	5.509,00
RECG 1000 P64	2550	3-4,2	-	11,27	-	3.703,00
RECG 1000 P54	2550	3-4,2	-	-	11,5	3.847,00
RECG 1000 P86	2550	3-4,2	11,89	-	-	3.605,00
RECG 1500 P64	3400	3-4,2	-	16,77	-	4.527,00



Model	Water Heating					Price (€)
	Nominal Airflow (m³/h)	Recommended Installation Range (m)	Heating Capacity 80/60°C (kW)	Heating Capacity 60/40°C (kW)	Heating Capacity 50/40°C (kW)	
RECG 1500 P54	3400	3-4,2	-	-	17,86	4.670,00
RECG 1500 P86	3400	3-4,2	17,29	-	-	4.405,00
RECG 2000 P64	5100	3-4,2	-	24,14	-	5.723,00
RECG 2000 P54	5100	3-4,2	-	-	25,24	5.770,00
RECG 2000 P86	5100	3-4,2	26,86	-	-	5.547,00
RECG 2500 P64	5950	3-4,2	-	28,84	-	6.851,00
RECG 2500 P54	5950	3-4,2	-	-	31,38	6.991,00
RECG 2500 P86	5950	3-4,2	33,63	-	-	6.571,00



Characteristics



- Self-supporting casing construction made of galvanized steel plate, finished in structural epoxy-polyester painting white colour RAL9016 as standard. Other colours or stainless steel are available on request.
- Front panel with option to customize and the possibility of including personalized logos, signs, graphic designs, images, etc.
- The inlet areas are located behind the front panel. They do not need maintenance.
- Anodized aluminium outlet vanes, airfoil shaped, adjustable from 0 to 15° each side.
- Low noise double-inlet centrifugal fans with external rotor motor. 5-speed controller. EC models assembled with very low consumption efficiency fans.
- “P” type with water heated coil. “E” type with electrical shielded elements, three stages with integrated regulation. “A” type without heating, air only. Optional expansion DX coil.
- Advanced Plug&Play control. Includes: Advanced PRO control with LCD display and integrated thermostat, door contact, 7m RJ11 cable and remote control. Optional: intelligent Clever Pro Control (automatic, programmable, ModBus for PKC, timer, etc.)

Specifications

Unheated				
Model	Nominal Airflow (m³/h)	Recommended Installation Range (m)		Price (€)
DAM M 1000 A	1800	2,5-3,5		2.126,00
DAM M 1500 A	2700	2,5-3,5		2.664,00
DAM M 2000 A	3600	2,5-3,5		3.318,00
DAM M 2500 A	4500	2,5-3,5		3.877,00
DAM M 3000 A	5400	2,5-3,5		5.861,00
DAM ECM 1000 A	1840	2,5-3,8		2.468,00
DAM ECM 1500 A	2760	2,5-3,8		3.171,00
DAM ECM 2000 A	3680	2,5-3,8		4.000,00
DAM ECM 2500 A	4600	2,5-3,8		4.712,00
DAM ECM 3000 A	5520	2,5-3,8		6.906,00
DAM G 1000 A	2400	3-4		2.426,00
DAM G 1500 A	3200	3-4		3.057,00
DAM G 2000 A	4800	3-4		3.884,00
DAM G 2500 A	5600	3-4		4.436,00
DAM G 3000 A	6400	3-4		6.394,00
DAM ECG 1000 A	2700	3-4,2		2.875,00
DAM ECG 1500 A	3600	3-4,2		3.674,00
DAM ECG 2000 A	5400	3-4,2		4.805,00
DAM ECG 2500 A	6300	3-4,2		5.521,00
DAM ECG 3000 A	7200	3-4,2		7.697,00

Electrical Heating				
Model	Nominal Airflow (m³/h)	Electrical Heating Capacity 400Vx3 (kW)	Recommended Installation Range (m)	Price (€)
DAM M 1000 E	1800	3/6/9	2,5-3,5	3.213,00
DAM M 1500 E	2700	4/8/12	2,5-3,5	3.860,00
DAM M 2000 E	3600	6/12/18	2,5-3,5	4.688,00
DAM M 2500 E	4500	6/12/18	2,5-3,5	5.646,00
DAM M 3000 E	5400	8/16/24	2,5-3,5	8.282,00
DAM ECM 1000 E	1840	3/6/9	2,5-3,8	3.572,00



Model	Electrical Heating				Price (€)
	Nominal Airflow (m³/h)	Electrical Heating Capacity 400Vx3 (kW)	Recommended Installation Range (m)		
DAM ECM 1500 E	2760	4/8/12	2,5-3,8		4.388,00
DAM ECM 2000 E	3680	6/12/18	2,5-3,8		5.389,00
DAM ECM 2500 E	4600	6/12/18	2,5-3,8		6.508,00
DAM ECM 3000 E	5520	8/16/24	2,5-3,8		9.382,00
DAM G 1000 E	2400	5/10/15	3-4		3.567,00
DAM G 1500 E	3200	7,5/15/22,5	3-4		4.353,00
DAM G 2000 E	4800	10/20/30	3-4		5.731,00
DAM G 2500 E	5600	10/20/30	3-4		6.813,00
DAM G 3000 E	6400	10/20/30	3-4		8.983,00
DAM ECG 1000 E	2700	5/10/15	3-4,2		4.033,00
DAM ECG 1500 E	3600	7,5/15/22,5	3-4,2		4.988,00
DAM ECG 2000 E	5400	10/20/30	3-4,2		6.683,00
DAM ECG 2500 E	6300	10/20/30	3-4,2		7.952,00
DAM ECG 3000 E	7200	10/20/30	3-4,2		10.332,00

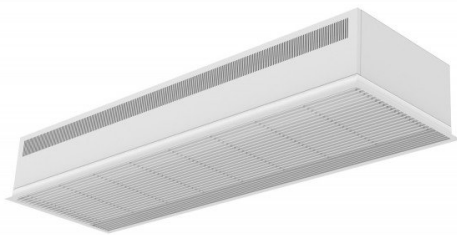
Model	Water Heating					Price (€)
	Nominal Airflow (m³/h)	Recommended Installation Range (m)	Heating Capacity 80/60°C (kW)	Heating Capacity 60/40°C (kW)	Heating Capacity 50/40°C (kW)	
DAM M 1000 P64	1660	2,5-3,5	-	8,56	-	2.596,00
DAM M 1000 P54	1660	2,5-3,5	-	-	8,52	2.749,00
DAM M 1000 P86	1660	2,5-3,5	9,17	-	-	2.492,00
DAM M 1500 P64	2490	2,5-3,5	-	13,69	-	3.251,00
DAM M 1500 P54	2490	2,5-3,5	-	-	14,34	3.392,00
DAM M 1500 P86	2490	2,5-3,5	14,26	-	-	3.132,00
DAM M 2000 P64	3320	2,5-3,5	-	18,26	-	4.077,00
DAM M 2000 P54	3320	2,5-3,5	-	-	18,65	4.209,00
DAM M 2000 P86	3320	2,5-3,5	20,65	-	-	3.877,00
DAM M 2500 P64	4150	2,5-3,5	-	22,12	-	5.002,00
DAM M 2500 P54	4150	2,5-3,5	-	-	24,32	5.251,00
DAM M 2500 P86	4150	2,5-3,5	26,92	-	-	4.728,00
DAM M 3000 P64	4980	2,5-3,5	-	28,37	-	7.373,00
DAM M 3000 P54	4980	2,5-3,5	-	-	29,77	7.723,00
DAM M 3000 P86	4980	2,5-3,5	33,24	-	-	7.006,00
DAM ECM 1000 P64	1720	2,5-3,8	-	8,77	-	2.929,00
DAM ECM 1000 P54	1720	2,5-3,8	-	-	8,74	3.093,00
DAM ECM 1000 P86	1720	2,5-3,8	9,38	-	-	2.823,00
DAM ECM 1500 P64	2580	2,5-3,8	-	14,02	-	3.722,00
DAM ECM 1500 P54	2580	2,5-3,8	-	-	14,71	3.868,00
DAM ECM 1500 P86	2580	2,5-3,8	14,58	-	-	3.602,00
DAM ECM 2000 P64	3440	2,5-3,8	-	18,7	-	4.725,00
DAM ECM 2000 P54	3440	2,5-3,8	-	-	19,13	4.908,00
DAM ECM 2000 P86	3440	2,5-3,8	21,12	-	-	4.519,00
DAM ECM 2500 P64	4300	2,5-3,8	-	23,33	-	5.826,00
DAM ECM 2500 P54	4300	2,5-3,8	-	-	24,95	6.122,00
DAM ECM 2500 P86	4300	2,5-3,8	27,53	-	-	5.540,00
DAM ECM 3000 P64	5160	2,5-3,8	-	29,05	-	8.417,00
DAM ECM 3000 P54	5160	2,5-3,8	-	-	30,54	8.776,00
DAM ECM 3000 P86	5160	2,5-3,8	33,99	-	-	8.041,00



Model	Water Heating					Price (€)
	Nominal Airflow (m³/h)	Recommended Installation Range (m)	Heating Capacity 80/60°C (kW)	Heating Capacity 60/40°C (kW)	Heating Capacity 50/40°C (kW)	
DAM G 1000 P64	2250	3-4	-	10,42	-	2.892,00
DAM G 1000 P54	2250	3-4	-	-	10,56	3.044,00
DAM G 1000 P86	2250	3-4	11,04	-	-	2.781,00
DAM G 1500 P64	3000	3-4	-	15,47	-	3.610,00
DAM G 1500 P54	3000	3-4	-	-	16,37	3.752,00
DAM G 1500 P86	3000	3-4	16,02	-	-	3.489,00
DAM G 2000 P64	4500	3-4	-	22,29	-	4.599,00
DAM G 2000 P54	4500	3-4	-	-	23,15	4.778,00
DAM G 2000 P86	4500	3-4	24,92	-	-	4.404,00
DAM G 2500 P64	5250	3-4	-	26,61	-	5.533,00
DAM G 2500 P54	5250	3-4	-	-	28,76	5.772,00
DAM G 2500 P86	5250	3-4	31,16	-	-	5.258,00
DAM G 3000 P64	6000	3-4	-	32,1	-	7.879,00
DAM G 3000 P54	6000	3-4	-	-	34,03	8.231,00
DAM G 3000 P86	6000	3-4	37,35	-	-	7.512,00
DAM ECG 1000 P64	2550	3-4,2	-	11,27	-	3.338,00
DAM ECG 1000 P54	2550	3-4,2	-	-	11,5	3.496,00
DAM ECG 1000 P86	2550	3-4,2	11,89	-	-	3.229,00
DAM ECG 1500 P64	3400	3-4,2	-	16,77	-	4.221,00
DAM ECG 1500 P54	3400	3-4,2	-	-	17,86	4.369,00
DAM ECG 1500 P86	3400	3-4,2	17,29	-	-	4.102,00
DAM ECG 2000 P64	5100	3-4,2	-	24,14	-	5.521,00
DAM ECG 2000 P54	5100	3-4,2	-	-	25,24	5.703,00
DAM ECG 2000 P86	5100	3-4,2	26,86	-	-	5.317,00
DAM ECG 2500 P64	5950	3-4,2	-	28,84	-	6.636,00
DAM ECG 2500 P54	5950	3-4,2	-	-	31,38	6.914,00
DAM ECG 2500 P86	5950	3-4,2	33,63	-	-	6.355,00
DAM ECG 3000 P64	6800	3-4,2	-	34,81	-	9.207,00
DAM ECG 3000 P54	6800	3-4,2	-	-	37,16	9.569,00
DAM ECG 3000 P86	6800	3-4,2	40,34	-	-	8.829,00



Characteristics



- Compact and low profile recessed air curtain with full grille view.
- Self-supporting casing construction made of galvanized steel plate, ready to be installed recessed in a false ceiling.
- Inlet grille (free of maintenance) made with aluminium profiles and blow-out nozzle, integrated in a single white frame colour RAL 9016. Other colours are available on request.
- Low noise double-inlet centrifugal fans with external rotor motor. 5-speed controller. EC models assembled with very low consumption efficiency fans.
- “P” type with water heated coil. “E” type with electrical shielded elements, three stages with integrated regulation. “A” type without heating, air only. Optional expansion DX coil.
- Advanced Plug&Play control. Includes: Advanced PRO control with LCD display and integrated thermostat, door contact, 7m RJ11 cable and remote control. Optional: intelligent Clever Pro Control (automatic, programmable, ModBus for PKC, timer, etc.)

Specifications

Unheated			
Model	Nominal Airflow (m³/h)	Recommended Installation Range (m)	Price (€)
RDAM M 1000 A	1800	2,5-3,5	2.769,00
RDAM M 1500 A	2700	2,5-3,5	3.535,00
RDAM M 2000 A	3600	2,5-3,5	4.274,00
RDAM M 2500 A	4500	2,5-3,5	4.852,00
RDAM ECM 1000 A	1840	2,5-3,8	3.123,00
RDAM ECM 1500 A	2760	2,5-3,8	4.055,00
RDAM ECM 2000 A	3680	2,5-3,8	4.964,00
RDAM ECM 2500 A	4600	2,5-3,8	5.895,00
RDAM G 1000 A	2400	3-4	3.056,00
RDAM G 1500 A	3200	3-4	3.822,00
RDAM G 2000 A	4800	3-4	4.812,00
RDAM G 2500 A	5600	3-4	5.382,00
RDAM ECG 1000 A	2700	3-4,2	3.510,00
RDAM ECG 1500 A	3600	3-4,2	4.440,00
RDAM ECG 2000 A	5400	3-4,2	5.726,00
RDAM ECG 2500 A	6300	3-4,2	6.704,00

Electrical Heating				
Model	Nominal Airflow (m³/h)	Electrical Heating Capacity 400Vx3 (kW)	Recommended Installation Range (m)	Price (€)
RDAM M 1000 E	1800	3/6/9	2,5-3,5	3.864,00
RDAM M 1500 E	2700	4/8/12	2,5-3,5	4.737,00
RDAM M 2000 E	3600	6/12/18	2,5-3,5	5.637,00
RDAM M 2500 E	4500	6/12/18	2,5-3,5	6.603,00
RDAM ECM 1000 E	1840	3/6/9	2,5-3,8	4.236,00
RDAM ECM 1500 E	2760	4/8/12	2,5-3,8	5.275,00
RDAM ECM 2000 E	3680	6/12/18	2,5-3,8	6.346,00
RDAM ECM 2500 E	4600	6/12/18	2,5-3,8	7.682,00
RDAM G 1000 E	2400	5/10/15	3-4	4.203,00
RDAM G 1500 E	3200	7,5/15/22,5	3-4	5.124,00
RDAM G 2000 E	4800	10/20/30	3-4	6.640,00
RDAM G 2500 E	5600	10/20/30	3-4	7.937,00



Electrical Heating				
Model	Nominal Airflow (m³/h)	Electrical Heating Capacity 400Vx3 (kW)	Recommended Installation Range (m)	Price (€)
RDAM ECG 1000 E	2700	5/10/15	3-4,2	4.675,00
RDAM ECG 1500 E	3600	7,5/15/22,5	3-4,2	5.765,00
RDAM ECG 2000 E	5400	10/20/30	3-4,2	7.590,00
RDAM ECG 2500 E	6300	10/20/30	3-4,2	9.085,00

Water Heating						
Model	Nominal Airflow (m³/h)	Recommended Installation Range (m)	Heating Capacity 80/60°C (kW)	Heating Capacity 60/40°C (kW)	Heating Capacity 50/40°C (kW)	Price (€)
RDAM M 1000 P64	1660	2,5-3,5	-	8,56	-	3.217,00
RDAM M 1000 P54	1660	2,5-3,5	-	-	8,52	3.363,00
RDAM M 1000 P86	1660	2,5-3,5	9,17	-	-	3.116,00
RDAM M 1500 P64	2490	2,5-3,5	-	13,69	-	4.095,00
RDAM M 1500 P54	2490	2,5-3,5	-	-	14,34	4.232,00
RDAM M 1500 P86	2490	2,5-3,5	14,26	-	-	3.981,00
RDAM M 2000 P64	3320	2,5-3,5	-	18,26	-	4.998,00
RDAM M 2000 P54	3320	2,5-3,5	-	-	18,65	5.110,00
RDAM M 2000 P86	3320	2,5-3,5	20,65	-	-	4.805,00
RDAM M 2500 P64	4150	2,5-3,5	-	22,12	-	5.926,00
RDAM M 2500 P54	4150	2,5-3,5	-	-	24,32	6.146,00
RDAM M 2500 P86	4150	2,5-3,5	26,92	-	-	5.661,00
RDAM ECM 1000 P64	1720	2,5-3,8	-	8,77	-	3.559,00
RDAM ECM 1000 P54	1720	2,5-3,8	-	-	8,74	3.713,00
RDAM ECM 1000 P86	1720	2,5-3,8	9,38	-	-	3.457,00
RDAM ECM 1500 P64	2580	2,5-3,8	-	14,02	-	4.578,00
RDAM ECM 1500 P54	2580	2,5-3,8	-	-	14,71	4.721,00
RDAM ECM 1500 P86	2580	2,5-3,8	14,58	-	-	4.462,00
RDAM ECM 2000 P64	3440	2,5-3,8	-	18,7	-	5.649,00
RDAM ECM 2000 P54	3440	2,5-3,8	-	-	19,13	5.783,00
RDAM ECM 2000 P86	3440	2,5-3,8	21,12	-	-	5.454,00
RDAM ECM 2500 P64	4300	2,5-3,8	-	23,33	-	6.748,00
RDAM ECM 2500 P54	4300	2,5-3,8	-	-	24,95	6.930,00
RDAM ECM 2500 P86	4300	2,5-3,8	27,53	-	-	6.478,00
RDAM G 1000 P64	2250	3-4	-	10,42	-	3.501,00
RDAM G 1000 P54	2250	3-4	-	-	10,56	3.645,00
RDAM G 1000 P86	2250	3-4	11,04	-	-	3.398,00
RDAM G 1500 P64	3000	3-4	-	15,47	-	4.349,00
RDAM G 1500 P54	3000	3-4	-	-	16,37	4.488,00
RDAM G 1500 P86	3000	3-4	16,02	-	-	4.235,00
RDAM G 2000 P64	4500	3-4	-	22,29	-	5.495,00
RDAM G 2000 P54	4500	3-4	-	-	23,15	5.616,00
RDAM G 2000 P86	4500	3-4	24,92	-	-	5.308,00
RDAM G 2500 P64	5250	3-4	-	26,61	-	6.433,00
RDAM G 2500 P54	5250	3-4	-	-	28,76	6.672,00
RDAM G 2500 P86	5250	3-4	31,16	-	-	6.168,00
RDAM ECG 1000 P64	2550	3-4,2	-	11,27	-	3.952,00
RDAM ECG 1000 P54	2550	3-4,2	-	-	11,5	4.101,00
RDAM ECG 1000 P86	2550	3-4,2	11,89	-	-	3.844,00
RDAM ECG 1500 P64	3400	3-4,2	-	16,77	-	4.968,00



Model	Water Heating					Price (€)
	Nominal Airflow (m³/h)	Recommended Installation Range (m)	Heating Capacity 80/60°C (kW)	Heating Capacity 60/40°C (kW)	Heating Capacity 50/40°C (kW)	
RDAM ECG 1500 P54	3400	3-4,2	-	-	17,86	5.104,00
RDAM ECG 1500 P86	3400	3-4,2	17,29	-	-	4.850,00
RDAM ECG 2000 P64	5100	3-4,2	-	24,14	-	6.415,00
RDAM ECG 2000 P54	5100	3-4,2	-	-	25,24	6.505,00
RDAM ECG 2000 P86	5100	3-4,2	26,86	-	-	6.217,00
RDAM ECG 2500 P64	5950	3-4,2	-	28,84	-	7.523,00
RDAM ECG 2500 P54	5950	3-4,2	-	-	31,38	7.699,00
RDAM ECG 2500 P86	5950	3-4,2	33,63	-	-	7.259,00



Characteristics



- Specially designed for applications where the body of the air curtain is to be installed inside a column or bulkhead for architectural reasons. It can be vertically or horizontally mounted.
- Self-supporting casing construction made of galvanized steel plate, finished in structural epoxy-polyester painting white colour RAL9016 as standard. Other colours or stainless steel are available on request.
- The air flow of Invisair follows a straight line from the air inlet grille to the to the discharge. Inlet area inside a bulkhead or column should be designed with suitable grille provided by others.
- Anodized aluminium outlet vanes, airfoil shaped, adjustable from 0 to 15° each side.
- Low noise double-inlet centrifugal fans with external rotor motor. 5-speed controller. EC models assembled with very low consumption efficiency fans.
- “P” type with water heated coil. “E” type with electrical shielded elements, three stages with integrated regulation. “A” type without heating, air only. Optional expansion DX coil.
- Advanced Plug&Play control. Includes: Advanced PRO control with LCD display and integrated thermostat, door contact, 7m RJ11 cable and remote control. Optional: intelligent Clever Pro Control (automatic, programmable, ModBus for PKC, timer, etc.)

Specifications

Unheated				
Model	Nominal Airflow (m³/h)		Recommended Installation Range (m)	Price (€)
IM 1000 A	1980		2,5-3,5	3.309,00
IM 3000 A	5280		2,5-3,5	7.683,00
IG 1000 A	2400		3-4	3.349,00
IG 3000 A	6400		3-4	7.732,00
IECG 1000 A	2700		3-4,2	3.799,00
IECG 3000 A	7200		3-4,2	9.141,00
IM 1500 A	2640		2,5-3,5	3.797,00
IM 2000 A	3960		2,5-3,5	4.554,00
IM 2500 A	4620		2,5-3,5	5.281,00
IG 1500 A	3200		3-4	3.836,00
IG 2000 A	4800		3-4	4.610,00
IG 2500 A	5600		3-4	5.330,00
IECG 1500 A	3600		3-4,2	4.485,00
IECG 2000 A	5400		3-4,2	5.536,00
IECG 2500 A	6300		3-4,2	6.457,00

Electrical Heating				
Model	Nominal Airflow (m³/h)	Electrical Heating Capacity 400Vx3 (kW)	Recommended Installation Range (m)	Price (€)
IM 1000 E	1980	3/6/9	2,5-3,5	4.398,00
IM 3000 E	5280	8/16/24	2,5-3,5	9.984,00
IG 1000 E	2400	5/10/15	3-4	4.447,00
IG 3000 E	6400	10/20/30	3-4	10.186,00
IECG 1000 E	2700	5/10/15	3-4,2	4.935,00
IECG 3000 E	7200	10/20/30	3-4,2	11.596,00
IM 1500 E	2640	4/8/12	2,5-3,5	5.015,00
IM 2000 E	3960	6/12/18	2,5-3,5	5.943,00
IM 2500 E	4620	6/12/18	2,5-3,5	7.073,00



Electrical Heating				
Model	Nominal Airflow (m³/h)	Electrical Heating Capacity 400Vx3 (kW)	Recommended Installation Range (m)	Price (€)
IG 1500 E	3200	7,5/15/22,5	3-4	5.158,00
IG 2000 E	4800	10/20/30	3-4	6.465,00
IG 2500 E	5600	10/20/30	3-4	7.735,00
IECG 1500 E	3600	7,5/15/22,5	3-4,2	5.829,00
IECG 2000 E	5400	10/20/30	3-4,2	7.423,00
IECG 2500 E	6300	10/20/30	3-4,2	8.939,00

Water Heating						
Model	Nominal Airflow (m³/h)	Recommended Installation Range (m)	Heating Capacity 80/60°C (kW)	Heating Capacity 60/40°C (kW)	Heating Capacity 50/40°C (kW)	Price (€)
IM 1000 P86	1860	2,5-3,5	9.84	-	-	3.600,00
IM 3000 P86	4960	2,5-3,5	33.15	-	-	8.442,00
IG 1000 P86	2250	3-4	11.04	-	-	3.639,00
IG 3000 P86	6000	3-4	37.35	-	-	8.493,00
IECG 1000 P86	2550	3-4,2	11.89	-	-	4.114,00
IECG 3000 P86	6800	3-4,2	40.34	-	-	9.903,00
IM 1000 P64	1860	2,5-3,5	-	9.22	-	3.688,00
IM 3000 P64	4960	2,5-3,5	-	26.94	-	8.676,00
IG 1000 P64	2250	3-4	-	10.42	-	3.729,00
IG 3000 P64	6000	3-4	-	32.1	-	8.725,00
IECG 1000 P64	2550	3-4,2	-	11.27	-	4.203,00
IECG 3000 P64	6800	3-4,2	-	34.81	-	10.134,00
IG 1000 P54	2250	3-4	-	-	10.56	3.769,00
IG 3000 P54	6000	3-4	-	-	34.03	9.712,00
IECG 1000 P54	2550	3-4,2	-	-	11.5	4.242,00
IECG 3000 P54	6800	3-4,2	-	-	37.16	11.121,00
IM 1500 P64	2480	2,5-3,5	-	13,65	-	4.358,00
IM 1500 P86	2480	2,5-3,5	14,23	-	-	4.232,00
IM 2000 P64	3720	2,5-3,5	-	19,7	-	5.285,00
IM 2000 P86	3720	2,5-3,5	22,17	-	-	5.077,00
IM 2500 P64	4340	2,5-3,5	-	23,48	-	6.402,00
IM 2500 P86	4340	2,5-3,5	27,69	-	-	6.116,00
IG 1500 P64	3000	3-4	-	15,47	-	4.398,00
IG 1500 P54	3000	3-4	-	-	16,37	4.544,00
IG 1500 P86	3000	3-4	16,02	-	-	4.274,00
IG 2000 P64	4500	3-4	-	22,29	-	5.324,00
IG 2000 P54	4500	3-4	-	-	23,15	5.381,00
IG 2000 P86	4500	3-4	24,92	-	-	5.133,00
IG 2500 P64	5250	3-4	-	26,61	-	6.437,00
IG 2500 P54	5250	3-4	-	-	28,76	6.545,00
IG 2500 P86	5250	3-4	31,16	-	-	6.157,00
IECG 1500 P64	3400	3-4,2	-	16,77	-	5.042,00
IECG 1500 P54	3400	3-4,2	-	-	17,86	5.189,00
IECG 1500 P86	3400	3-4,2	17,29	-	-	4.921,00
IECG 2000 P64	5100	3-4,2	-	24,14	-	6.269,00
IECG 2000 P54	5100	3-4,2	-	-	25,24	6.421,00
IECG 2000 P86	5100	3-4,2	26,86	-	-	6.062,00
IECG 2500 P64	5950	3-4,2	-	28,84	-	7.588,00



Model	Nominal Airflow (m³/h)	Recommended Installation Range (m)	Water Heating			Price (€)
			Heating Capacity 80/60°C (kW)	Heating Capacity 60/40°C (kW)	Heating Capacity 50/40°C (kW)	
IECG 2500 P54	5950	3-4,2	-	-	31,38	7.760,00
IECG 2500 P86	5950	3-4,2	33,63	-	-	7.300,00



Characteristics



- Stylish, discreet and contemporary design adaptive to any interior architecture.
- Smooth front panel can be customized with logotypes, lighting, lettering or safety and informative signals, according to the client requirements.
- Self-supporting steel rounded casing with edgeless plastic side covers, finished in structural epoxy-polyester painting white colour RAL9016 as standard. Other colours are available on request.
- Hidden top air entrance, avoiding the inside view of the unit and the inlet grille.
- Anodized aluminium outlet vanes, airfoil shaped, adjustable in both directions.
- Low noise double-inlet centrifugal fans with external rotor motor. 5-speed controller. EC models assembled with very low consumption efficiency fans.
- “P” type with water heated coil. “E” type with electrical shielded elements, three stages with integrated regulation. “A” type without heating, air only. Optional expansion DX coil.
- Advanced Plug&Play control. Includes: Advanced PRO control with LCD display and integrated thermostat, door contact, 7m RJ11 cable and remote control. Optional: intelligent Clever Pro Control (automatic, programmable, ModBus for PKC, timer, etc.)

Specifications

Unheated				
Model	Nominal Airflow (m³/h)		Recommended Installation Range (m)	Price (€)
SMART M 1000 A	1800		2,5-3,5	1.934,00
SMART M 1500 A	2700		2,5-3,5	2.381,00
SMART M 2000 A	3600		2,5-3,5	2.904,00
SMART M 2500 A	4500		2,5-3,5	3.654,00
SMART M 3000 A	5400		2,5-3,5	5.080,00
SMART ECM 1000 A	1840		2,5-3,8	2.292,00
SMART ECM 1500 A	2760		2,5-3,8	3.021,00
SMART ECM 2000 A	3680		2,5-3,8	3.751,00
SMART ECM 2500 A	4600		2,5-3,8	4.518,00
SMART ECM 3000 A	5520		2,5-3,8	6.154,00
SMART G 1000 A	2400		3-4	2.338,00
SMART G 1500 A	3200		3-4	2.812,00
SMART G 2000 A	4800		3-4	3.497,00
SMART G 2500 A	5600		3-4	4.237,00
SMART G 3000 A	6400		3-4	5.646,00
SMART ECG 1000 A	2700		3-4,2	2.720,00
SMART ECG 1500 A	3600		3-4,2	3.342,00
SMART ECG 2000 A	5400		3-4,2	4.518,00
SMART ECG 2500 A	6300		3-4,2	5.376,00
SMART ECG 3000 A	7200		3-4,2	6.995,00

Electrical Heating				
Model	Nominal Airflow (m³/h)	Electrical Heating Capacity 400Vx3 (kW)	Recommended Installation Range (m)	Price (€)
SMART M 1000 E	1800	3/6/9	2,5-3,5	3.095,00
SMART M 1500 E	2700	4/8/12	2,5-3,5	3.657,00
SMART M 2000 E	3600	6/12/18	2,5-3,5	4.358,00
SMART M 2500 E	4500	6/12/18	2,5-3,5	5.547,00
SMART M 3000 E	5400	8/16/24	2,5-3,5	7.692,00
SMART ECM 1000 E	1840	3/6/9	2,5-3,8	3.465,00



Electrical Heating				
Model	Nominal Airflow (m³/h)	Electrical Heating Capacity 400Vx3 (kW)	Recommended Installation Range (m)	Price (€)
SMART ECM 1500 E	2760	4/8/12	2,5-3,8	4.201,00
SMART ECM 2000 E	3680	6/12/18	2,5-3,8	5.093,00
SMART ECM 2500 E	4600	6/12/18	2,5-3,8	6.457,00
SMART ECM 3000 E	5520	8/16/24	2,5-3,8	8.844,00
SMART G 1000 E	2400	5/10/15	3-4	3.465,00
SMART G 1500 E	3200	7,5/15/22,5	3-4	4.065,00
SMART G 2000 E	4800	10/20/30	3-4	5.478,00
SMART G 2500 E	5600	10/20/30	3-4	6.797,00
SMART G 3000 E	6400	10/20/30	3-4	8.449,00
SMART ECG 1000 E	2700	5/10/15	3-4,2	3.948,00
SMART ECG 1500 E	3600	7,5/15/22,5	3-4,2	4.732,00
SMART ECG 2000 E	5400	10/20/30	3-4,2	6.467,00
SMART ECG 2500 E	6300	10/20/30	3-4,2	7.994,00
SMART ECG 3000 E	7200	10/20/30	3-4,2	9.857,00

Water Heating						
Model	Nominal Airflow (m³/h)	Recommended Installation Range (m)	Heating Capacity 80/60°C (kW)	Heating Capacity 60/40°C (kW)	Heating Capacity 50/40°C (kW)	Price (€)
SMART M 1000 P64	1660	2,5-3,5	-	8,56	-	2.428,00
SMART M 1000 P54	1660	2,5-3,5	-	-	8,52	2.590,00
SMART M 1000 P86	1660	2,5-3,5	9,17	-	-	2.317,00
SMART M 1500 P64	2490	2,5-3,5	-	13,69	-	2.999,00
SMART M 1500 P54	2490	2,5-3,5	-	-	14,34	3.149,00
SMART M 1500 P86	2490	2,5-3,5	14,26	-	-	2.876,00
SMART M 2000 P64	3320	2,5-3,5	-	18,26	-	3.700,00
SMART M 2000 P54	3320	2,5-3,5	-	-	18,65	3.923,00
SMART M 2000 P86	3320	2,5-3,5	20,65	-	-	3.491,00
SMART M 2500 P64	4150	2,5-3,5	-	22,12	-	4.838,00
SMART M 2500 P54	4150	2,5-3,5	-	-	24,32	5.156,00
SMART M 2500 P86	4150	2,5-3,5	26,92	-	-	4.549,00
SMART M 3000 P64	4980	2,5-3,5	-	28,37	-	6.679,00
SMART M 3000 P54	4980	2,5-3,5	-	-	29,77	7.054,00
SMART M 3000 P86	4980	2,5-3,5	33,24	-	-	6.290,00
SMART ECM 1000 P64	1720	2,5-3,8	-	8,77	-	2.895,00
SMART ECM 1000 P54	1720	2,5-3,8	-	-	8,74	3.057,00
SMART ECM 1000 P86	1720	2,5-3,8	9,38	-	-	2.771,00
SMART ECM 1500 P64	2580	2,5-3,8	-	14,02	-	3.725,00
SMART ECM 1500 P54	2580	2,5-3,8	-	-	14,71	3.814,00
SMART ECM 1500 P86	2580	2,5-3,8	14,58	-	-	3.505,00
SMART ECM 2000 P64	3440	2,5-3,8	-	18,7	-	4.367,00
SMART ECM 2000 P54	3440	2,5-3,8	-	-	19,13	4.585,00
SMART ECM 2000 P86	3440	2,5-3,8	21,12	-	-	4.151,00
SMART ECM 2500 P64	4300	2,5-3,8	-	23,33	-	5.830,00
SMART ECM 2500 P54	4300	2,5-3,8	-	-	24,95	6.011,00
SMART ECM 2500 P86	4300	2,5-3,8	27,53	-	-	5.394,00
SMART ECM 3000 P64	5160	2,5-3,8	-	29,05	-	7.755,00
SMART ECM 3000 P54	5160	2,5-3,8	-	-	30,54	8.140,00
SMART ECM 3000 P86	5160	2,5-3,8	33,99	-	-	7.357,00



Model	Water Heating					Price (€)
	Nominal Airflow (m³/h)	Recommended Installation Range (m)	Heating Capacity 80/60°C (kW)	Heating Capacity 60/40°C (kW)	Heating Capacity 50/40°C (kW)	
SMART G 1000 P64	2250	3-4	-	10,42	-	2.851,00
SMART G 1000 P54	2250	3-4	-	-	10,56	3.017,00
SMART G 1000 P86	2250	3-4	11,04	-	-	2.738,00
SMART G 1500 P64	3000	3-4	-	15,47	-	3.271,00
SMART G 1500 P54	3000	3-4	-	-	16,37	3.423,00
SMART G 1500 P86	3000	3-4	16,02	-	-	3.163,00
SMART G 2000 P64	4500	3-4	-	22,29	-	4.255,00
SMART G 2000 P54	4500	3-4	-	-	23,15	4.420,00
SMART G 2000 P86	4500	3-4	24,92	-	-	4.045,00
SMART G 2500 P64	5250	3-4	-	26,61	-	5.400,00
SMART G 2500 P54	5250	3-4	-	-	28,76	5.712,00
SMART G 2500 P86	5250	3-4	31,16	-	-	5.106,00
SMART G 3000 P64	6000	3-4	-	32,1	-	7.217,00
SMART G 3000 P54	6000	3-4	-	-	34,03	7.594,00
SMART G 3000 P86	6000	3-4	37,35	-	-	6.832,00
SMART ECG 1000 P64	2550	3-4,2	-	11,27	-	3.200,00
SMART ECG 1000 P54	2550	3-4,2	-	-	11,5	3.370,00
SMART ECG 1000 P86	2550	3-4,2	11,89	-	-	3.091,00
SMART ECG 1500 P64	3400	3-4,2	-	16,77	-	3.905,00
SMART ECG 1500 P54	3400	3-4,2	-	-	17,86	4.061,00
SMART ECG 1500 P86	3400	3-4,2	17,29	-	-	3.777,00
SMART ECG 2000 P64	5100	3-4,2	-	24,14	-	5.212,00
SMART ECG 2000 P54	5100	3-4,2	-	-	25,24	5.526,00
SMART ECG 2000 P86	5100	3-4,2	26,86	-	-	4.991,00
SMART ECG 2500 P64	5950	3-4,2	-	28,84	-	6.546,00
SMART ECG 2500 P54	5950	3-4,2	-	-	31,38	6.971,00
SMART ECG 2500 P86	5950	3-4,2	33,63	-	-	6.248,00
SMART ECG 3000 P64	6800	3-4,2	-	34,81	-	8.594,00
SMART ECG 3000 P54	6800	3-4,2	-	-	37,16	8.974,00
SMART ECG 3000 P86	6800	3-4,2	40,34	-	-	8.195,00



Characteristics



- Decorative air curtain in contemporary architectural style. Its minimalist and smart design integrates in any environment and offers infinite options to customize.
- The panels can include logos, lighting, signage, safety or information signs, graphics, pictures, clocks, all according to customer specifications.
- Front anodized aluminium panels. Optionally manufactured in brushed or mirror polished stainless steel. Other materials are possible, such as galvanized steel, smooth or textured skinplate, wood, etc.
- Central structure made of galvanized steel finished in black forge as standard. Other colours are available on request.
- Anodized aluminium outlet vanes, airfoil shaped, adjustable in both directions.
- Low noise double-inlet centrifugal fans with external rotor motor. 5-speed controller. EC models assembled with very low consumption efficiency fans.
- "P" type with water heated coil. "E" type with electrical shielded elements, three stages with integrated regulation. "A" type without heating, air only. Optional expansion DX coil.
- Advanced Plug&Play control. Includes: Advanced PRO control with LCD display and integrated thermostat, door contact, 7m RJ11 cable and remote control. Optional: intelligent Clever Pro Control (automatic, programmable, ModBus for PKC, timer, etc.)

Specifications

Unheated				
Model	Nominal Airflow (m³/h)		Recommended Installation Range (m)	Price (€)
ZEN M 1000 A	1980		2,5-3,5	2.885,00
ZEN M 1500 A	2640		2,5-3,5	3.566,00
ZEN M 2000 A	3960		2,5-3,5	4.574,00
ZEN M 2500 A	4620		2,5-3,5	5.071,00
ZEN G 1000 A	2400		3-4	2.921,00
ZEN G 1500 A	3200		3-4	3.607,00
ZEN G 2000 A	4800		3-4	4.602,00
ZEN G 2500 A	5600		3-4	5.108,00
ZEN ECG 1000 A	2700		3-4,2	3.405,00
ZEN ECG 1500 A	3600		3-4,2	4.268,00
ZEN ECG 2000 A	5400		3-4,2	5.578,00
ZEN ECG 2500 A	6300		3-4,2	6.262,00

Electrical Heating				
Model	Nominal Airflow (m³/h)	Electrical Heating Capacity 400Vx3 (kW)	Recommended Installation Range (m)	Price (€)
ZEN M 1000 E	1980	3/6/9	2,5-3,5	4.005,00
ZEN M 1500 E	2640	4/8/12	2,5-3,5	4.806,00
ZEN M 2000 E	3960	6/12/18	2,5-3,5	5.984,00
ZEN M 2500 E	4620	6/12/18	2,5-3,5	6.886,00
ZEN G 1000 E	2400	5/10/15	3-4	4.098,00
ZEN G 1500 E	3200	7,5/15/22,5	3-4	4.945,00
ZEN G 2000 E	4800	10/20/30	3-4	6.482,00
ZEN G 2500 E	5600	10/20/30	3-4	7.529,00
ZEN ECG 1000 E	2700	5/10/15	3-4,2	4.597,00
ZEN ECG 1500 E	3600	7,5/15/22,5	3-4,2	5.627,00
ZEN ECG 2000 E	5400	10/20/30	3-4,2	7.486,00
ZEN ECG 2500 E	6300	10/20/30	3-4,2	8.721,00



Model	Water Heating					Price (€)
	Nominal Airflow (m³/h)	Recommended Installation Range (m)	Heating Capacity 80/60°C (kW)	Heating Capacity 60/40°C (kW)	Heating Capacity 50/40°C (kW)	
ZEN M 1000 P64	1860	2,5-3,5	-	9,22	-	3.524,00
ZEN M 1000 P86	1860	2,5-3,5	9,84	-	-	3.392,00
ZEN M 1500 P64	2480	2,5-3,5	-	13,65	-	4.278,00
ZEN M 1500 P86	2480	2,5-3,5	14,23	-	-	4.153,00
ZEN M 2000 P64	3720	2,5-3,5	-	19,7	-	5.455,00
ZEN M 2000 P86	3720	2,5-3,5	22,17	-	-	5.248,00
ZEN M 2500 P64	4340	2,5-3,5	-	23,48	-	6.466,00
ZEN M 2500 P86	4340	2,5-3,5	27,69	-	-	6.061,00
ZEN G 1000 P64	2250	3-4	-	10,42	-	3.562,00
ZEN G 1000 P54	2250	3-4	-	-	10,56	3.730,00
ZEN G 1000 P86	2250	3-4	11,04	-	-	3.429,00
ZEN G 1500 P64	3000	3-4	-	15,47	-	4.321,00
ZEN G 1500 P54	3000	3-4	-	-	16,37	4.506,00
ZEN G 1500 P86	3000	3-4	16,02	-	-	4.200,00
ZEN G 2000 P64	4500	3-4	-	22,29	-	5.484,00
ZEN G 2000 P54	4500	3-4	-	-	23,15	5.661,00
ZEN G 2000 P86	4500	3-4	24,92	-	-	5.277,00
ZEN G 2500 P64	5250	3-4	-	26,61	-	6.522,00
ZEN G 2500 P54	5250	3-4	-	-	28,76	6.766,00
ZEN G 2500 P86	5250	3-4	31,16	-	-	6.103,00
ZEN ECG 1000 P64	2550	3-4,2	-	11,27	-	3.952,00
ZEN ECG 1000 P54	2550	3-4,2	-	-	11,5	4.219,00
ZEN ECG 1000 P86	2550	3-4,2	11,89	-	-	3.915,00
ZEN ECG 1500 P64	3400	3-4,2	-	16,77	-	4.852,00
ZEN ECG 1500 P54	3400	3-4,2	-	-	17,86	5.165,00
ZEN ECG 1500 P86	3400	3-4,2	17,29	-	-	4.837,00
ZEN ECG 2000 P64	5100	3-4,2	-	24,14	-	6.426,00
ZEN ECG 2000 P54	5100	3-4,2	-	-	25,24	6.649,00
ZEN ECG 2000 P86	5100	3-4,2	26,86	-	-	6.254,00
ZEN ECG 2500 P64	5950	3-4,2	-	28,84	-	7.683,00
ZEN ECG 2500 P54	5950	3-4,2	-	-	31,38	7.903,00
ZEN ECG 2500 P86	5950	3-4,2	33,63	-	-	7.266,00



Characteristics



- Decorative cylindrical air curtain for vertical or horizontal installation.
- Faceted self-supporting casing construction made of galvanized plated steel, finished in structural epoxy-polyester painting white RAL9016 or silver grey RAL9006 as standard. Other colours or stainless steel are available on request.
- Large faceted inlet grille avoiding intensive maintenance.
- Anodized aluminium outlet vanes, airfoil shaped, adjustable from 0 to 15° each side.
- Low noise double-inlet centrifugal fans with external rotor motor. 5-speed controller. EC models assembled with very low consumption efficiency fans.
- “P” type with water heated coil. “E” type with electrical shielded elements, three stages with integrated regulation. “A” type without heating, air only. Optional expansion DX coil.
- Advanced Plug&Play control. Includes: Advanced PRO control with LCD display and integrated thermostat, door contact, 7m RJ11 cable and remote control. Optional: intelligent Clever Pro Control (automatic, programmable, ModBus for PKC, timer, etc.)

Specifications

Unheated			
Model	Nominal Airflow (m³/h)	Recommended Installation Range (m)	Price (€)
RUND M 1000 A	1980	2,5-3,5	4.576,00
RUND M 1500 A	2640	2,5-3,5	5.630,00
RUND M 2000 A	3960	2,5-3,5	6.389,00
RUND M 2500 A	4620	2,5-3,5	7.110,00
RUND M 3000 A	5280	2,5-3,5	9.565,00
RUND G 1000 A	2400	3-4	4.615,00
RUND G 1500 A	3200	3-4	5.667,00
RUND G 2000 A	4800	3-4	6.419,00
RUND G 2500 A	5600	3-4	7.151,00
RUND G 3000 A	6400	3-4	9.605,00
RUND ECG 1000 A	2700	3-4,2	5.142,00
RUND ECG 1500 A	3600	3-4,2	6.362,00
RUND ECG 2000 A	5400	3-4,2	7.415,00
RUND ECG 2500 A	6300	3-4,2	8.328,00
RUND ECG 3000 A	7200	3-4,2	11.003,00

Electrical Heating				
Model	Nominal Airflow (m³/h)	Electrical Heating Capacity 400Vx3 (kW)	Recommended Installation Range (m)	Price (€)
RUND M 1000 E	1980	3/6/9	2,5-3,5	5.615,00
RUND M 1500 E	2640	4/8/12	2,5-3,5	6.808,00
RUND M 2000 E	3960	6/12/18	2,5-3,5	7.735,00
RUND M 2500 E	4620	6/12/18	2,5-3,5	8.848,00
RUND M 3000 E	5280	8/16/24	2,5-3,5	11.963,00
RUND G 1000 E	2400	5/10/15	3-4	5.742,00
RUND G 1500 E	3200	7,5/15/22,5	3-4	6.956,00
RUND G 2000 E	4800	10/20/30	3-4	8.217,00
RUND G 2500 E	5600	10/20/30	3-4	9.469,00
RUND G 3000 E	6400	10/20/30	3-4	12.123,00
RUND ECG 1000 E	2700	5/10/15	3-4,2	6.285,00
RUND ECG 1500 E	3600	7,5/15/22,5	3-4,2	7.681,00

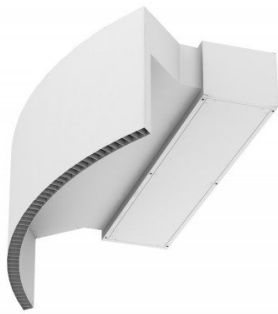


Electrical Heating				
Model	Nominal Airflow (m³/h)	Electrical Heating Capacity 400Vx3 (kW)	Recommended Installation Range (m)	Price (€)
RUND ECG 2000 E	5400	10/20/30	3-4,2	9.244,00
RUND ECG 2500 E	6300	10/20/30	3-4,2	10.684,00
RUND ECG 3000 E	7200	10/20/30	3-4,2	13.572,00

Water Heating						
Model	Nominal Airflow (m³/h)	Recommended Installation Range (m)	Heating Capacity 80/60°C (kW)	Heating Capacity 60/40°C (kW)	Heating Capacity 50/40°C (kW)	Price (€)
RUND M 1000 P64	1860	2,5-3,5	-	9,22	-	5.206,00
RUND M 1000 P86	1860	2,5-3,5	9,84	-	-	4.944,00
RUND M 1500 P64	2480	2,5-3,5	-	13,65	-	6.138,00
RUND M 1500 P86	2480	2,5-3,5	14,23	-	-	6.021,00
RUND M 2000 P64	3720	2,5-3,5	-	19,7	-	7.064,00
RUND M 2000 P86	3720	2,5-3,5	22,17	-	-	6.868,00
RUND M 2500 P64	4340	2,5-3,5	-	23,48	-	8.167,00
RUND M 2500 P86	4340	2,5-3,5	27,69	-	-	7.895,00
RUND M 3000 P64	4960	2,5-3,5	-	28,29	-	11.000,00
RUND M 3000 P86	4960	2,5-3,5	33,15	-	-	10.636,00
RUND G 1000 P64	2250	3-4	-	10,42	-	5.244,00
RUND G 1000 P54	2250	3-4	-	-	10,56	5.409,00
RUND G 1000 P86	2250	3-4	11,04	-	-	4.982,00
RUND G 1500 P64	3000	3-4	-	15,47	-	6.177,00
RUND G 1500 P54	3000	3-4	-	-	16,37	6.354,00
RUND G 1500 P86	3000	3-4	16,02	-	-	6.062,00
RUND G 2000 P64	4500	3-4	-	22,29	-	7.093,00
RUND G 2000 P54	4500	3-4	-	-	23,15	7.262,00
RUND G 2000 P86	4500	3-4	24,92	-	-	6.895,00
RUND G 2500 P64	5250	3-4	-	26,61	-	8.208,00
RUND G 2500 P54	5250	3-4	-	-	28,76	8.429,00
RUND G 2500 P86	5250	3-4	31,16	-	-	7.932,00
RUND G 3000 P64	6000	3-4	-	32,1	-	11.039,00
RUND G 3000 P54	6000	3-4	-	-	34,03	11.389,00
RUND G 3000 P86	6000	3-4	37,35	-	-	10.679,00
RUND ECG 1000 P64	2550	3-4,2	-	11,27	-	5.770,00
RUND ECG 1000 P54	2550	3-4,2	-	-	11,5	5.944,00
RUND ECG 1000 P86	2550	3-4,2	11,89	-	-	5.506,00
RUND ECG 1500 P64	3400	3-4,2	-	16,77	-	6.879,00
RUND ECG 1500 P54	3400	3-4,2	-	-	17,86	7.055,00
RUND ECG 1500 P86	3400	3-4,2	17,29	-	-	6.756,00
RUND ECG 2000 P64	5100	3-4,2	-	24,14	-	8.093,00
RUND ECG 2000 P54	5100	3-4,2	-	-	25,24	8.271,00
RUND ECG 2000 P86	5100	3-4,2	26,86	-	-	7.887,00
RUND ECG 2500 P64	5950	3-4,2	-	28,84	-	9.396,00
RUND ECG 2500 P54	5950	3-4,2	-	-	31,38	9.639,00
RUND ECG 2500 P86	5950	3-4,2	33,63	-	-	9.115,00
RUND ECG 3000 P64	6800	3-4,2	-	34,81	-	12.467,00
RUND ECG 3000 P54	6800	3-4,2	-	-	37,16	12.827,00
RUND ECG 3000 P86	6800	3-4,2	40,34	-	-	12.092,00



Characteristics



- Specially designed to be installed in all type of revolving doors. Two possible layouts, tailored dimensions.
- Self-supporting casing construction made of galvanized steel plate, finished in structural epoxy-polyester painting white colour RAL9016 as standard. Other colours or stainless steel are available on request.
- Large faceted inlet grille avoiding intensive maintenance.
- Circular anodized aluminium outlet vanes, airfoil shaped.
- Low noise double-inlet centrifugal fans with external rotor motor. 5-speed controller. EC models assembled with very low consumption efficiency fans.
- “P” type with water heated coil. “E” type with electrical shielded elements, three stages with integrated regulation. “A” type without heating, air only. Optional expansion DX coil.
- Advanced Plug&Play control. Includes: Advanced PRO control with LCD display and integrated thermostat, door contact, 7m RJ11 cable and remote control. Optional: intelligent Clever Pro Control (automatic, programmable, ModBus for PKC, timer, etc.)

Specifications

Unheated			
Model	Nominal Airflow (m³/h)	Recommended Installation Range (m)	Price (€)
ROTO G 1000 A	2400	3-4	7.664,00
ROTO G 1500 A	3200	3-4	8.049,00
ROTO G 2000 A	4800	3-4	9.164,00
ROTO G 2500 A	5600	3-4	10.469,00
ROTO ECG 1000 A	2700	3-4,2	8.266,00
ROTO ECG 1500 A	3600	3-4,2	8.813,00
ROTO ECG 2000 A	5400	3-4,2	10.239,00
ROTO ECG 2500 A	6300	3-4,2	11.738,00

Electrical Heating				
Model	Nominal Airflow (m³/h)	Electrical Heating Capacity 400Vx3 (kW)	Recommended Installation Range (m)	Price (€)
ROTO G 1000 E	2400	5/10/15	3-4	8.788,00
ROTO G 1500 E	3200	7,5/15/22,5	3-4	9.361,00
ROTO G 2000 E	4800	10/20/30	3-4	10.994,00
ROTO G 2500 E	5600	10/20/30	3-4	12.818,00
ROTO ECG 1000 E	2700	5/10/15	3-4,2	9.410,00
ROTO ECG 1500 E	3600	7,5/15/22,5	3-4,2	10.151,00
ROTO ECG 2000 E	5400	10/20/30	3-4,2	12.102,00
ROTO ECG 2500 E	6300	10/20/30	3-4,2	14.126,00

Water Heating						
Model	Nominal Airflow (m³/h)	Recommended Installation Range (m)	Heating Capacity 80/60°C (kW)	Heating Capacity 60/40°C (kW)	Heating Capacity 50/40°C (kW)	Price (€)
ROTO G 1000 P64	2250	3-4	-	10,42	-	8.123,00
ROTO G 1000 P54	2250	3-4	-	-	10,56	8.274,00
ROTO G 1000 P86	2250	3-4	11,04	-	-	8.017,00
ROTO G 1500 P64	3000	3-4	-	15,47	-	8.595,00
ROTO G 1500 P54	3000	3-4	-	-	16,37	8.734,00
ROTO G 1500 P86	3000	3-4	16,02	-	-	8.477,00
ROTO G 2000 P64	4500	3-4	-	22,29	-	9.873,00



Model	Water Heating					Price (€)
	Nominal Airflow (m³/h)	Recommended Installation Range (m)	Heating Capacity 80/60°C (kW)	Heating Capacity 60/40°C (kW)	Heating Capacity 50/40°C (kW)	
ROTO G 2000 P54	4500	3-4	-	-	23,15	9.934,00
ROTO G 2000 P86	4500	3-4	24,92	-	-	9.676,00
ROTO G 2500 P64	5250	3-4	-	26,61	-	11.558,00
ROTO G 2500 P54	5250	3-4	-	-	28,76	11.600,00
ROTO G 2500 P86	5250	3-4	31,16	-	-	11.281,00
ROTO ECG 1000 P64	2550	3-4,2	-	11,27	-	8.729,00
ROTO ECG 1000 P54	2550	3-4,2	-	-	11,5	8.883,00
ROTO ECG 1000 P86	2550	3-4,2	11,89	-	-	8.616,00
ROTO ECG 1500 P64	3400	3-4,2	-	16,77	-	9.357,00
ROTO ECG 1500 P54	3400	3-4,2	-	-	17,86	9.505,00
ROTO ECG 1500 P86	3400	3-4,2	17,29	-	-	9.237,00
ROTO ECG 2000 P64	5100	3-4,2	-	24,14	-	10.952,00
ROTO ECG 2000 P54	5100	3-4,2	-	-	25,24	11.149,00
ROTO ECG 2000 P86	5100	3-4,2	26,86	-	-	10.747,00
ROTO ECG 2500 P64	5950	3-4,2	-	28,84	-	12.842,00
ROTO ECG 2500 P54	5950	3-4,2	-	-	31,38	12.931,00
ROTO ECG 2500 P86	5950	3-4,2	33,63	-	-	12.560,00



Characteristics



- Specially designed to be installed in doors of cold stores.
- Self-supporting casing construction made of galvanized steel plate, finished in structural epoxy-polyester painting white colour RAL9016 as standard. Other colours or stainless steel are available on request.
- Large faceted inlet grille avoiding intensive maintenance. Also available with flat micro-perforated inlet grille, more elegant for commercial doors where heating is not needed.
- Anodized aluminium outlet vanes, airfoil shaped, adjustable from 0 to 15° each side.
- Low noise double-inlet centrifugal fans with external rotor motor. 5-speed controller. EC models assembled with very low consumption efficiency fans.
- “A” type without heating, air only.
- Advanced Plug&Play control. Includes: Advanced PRO control with LCD display and integrated thermostat, door contact, 7m RJ11 cable and remote control. Optional: intelligent Clever Pro Control (automatic, programmable, ModBus for PKC, timer, etc.)
- Includes varnishing on the PCB to protect it from corrosion.

Specifications

Model	Unheated		
	Nominal Airflow (m³/h)	Recommended Installation Range (m)	Price (€)
KM 1000 A	1800	2,5-3,5	1.961,00
KM 1500 A	2700	2,5-3,5	2.414,00
KM 2000 A	3600	2,5-3,5	2.949,00
KM 2500 A	4500	2,5-3,5	3.711,00
KM 3000 A	5400	2,5-3,5	5.123,00
KECM 1000 A	1840	2,5-3,8	2.325,00
KECM 1500 A	2760	2,5-3,8	2.950,00
KECM 2000 A	3680	2,5-3,8	3.664,00
KECM 2500 A	4600	2,5-3,8	4.589,00
KECM 3000 A	5520	2,5-3,8	6.207,00
KG 1000 A	2400	3-4	2.282,00
KG 1500 A	3200	3-4	2.731,00
KG 2000 A	4800	3-4	3.550,00
KG 2500 A	5600	3-4	4.303,00
KG 3000 A	6400	3-4	5.694,00
KECG 1000 A	2700	3-4,2	2.759,00
KECG 1500 A	3600	3-4,2	3.391,00
KECG 2000 A	5400	3-4,2	4.542,00
KECG 2500 A	6300	3-4,2	5.459,00
KECG 3000 A	7200	3-4,2	7.052,00



Characteristics



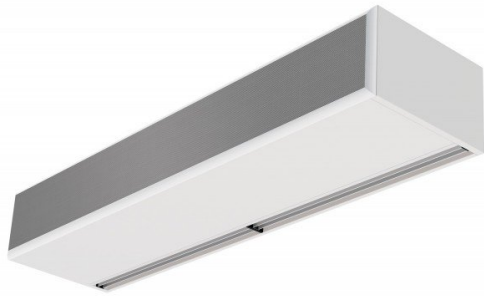
- Compact and low profile air only recessed air curtain, with full grille view, specially designed for applications without heating.
- Self-supporting casing construction made of galvanized steel plate, ready to be installed recessed in a false ceiling.
- Inlet grille (free of maintenance) made with aluminium profiles and blow-out nozzle, integrated in a single white frame colour RAL 9016. Other colours are available on request.
- Anodized aluminium outlet vanes, airfoil shaped
- Low noise double-inlet centrifugal fans with external rotor motor. 5-speed controller. EC models assembled with very low consumption efficiency fans.
- “A” type without heating, air only.
- Advanced Plug&Play control. Includes: Advanced PRO control with LCD display and integrated thermostat, door contact, 7m RJ11 cable and remote control. Optional: intelligent Clever Pro Control (automatic, programmable, ModBus for PKC, timer, etc.)

Specifications

Model	Unheated		
	Nominal Airflow (m³/h)	Recommended Installation Range (m)	Price (€)
CR M 1000 A	1800	2,5-3,5	2.665,00
CR M 1500 A	2700	2,5-3,5	3.088,00
CR M 2000 A	3600	2,5-3,5	3.930,00
CR M 2500 A	4500	2,5-3,5	4.562,00
CR ECM 1000 A	1840	2,5-3,8	3.026,00
CR ECM 1500 A	2760	2,5-3,8	3.611,00
CR ECM 2000 A	3680	2,5-3,8	4.628,00
CR ECM 2500 A	4600	2,5-3,8	5.422,00
CR G 1000 A	2400	3-4	2.965,00
CR G 1500 A	3200	3-4	3.387,00
CR G 2000 A	4800	3-4	4.494,00
CR G 2500 A	5600	3-4	5.124,00
CR ECG 1000 A	2700	3-4,2	3.432,00
CR ECG 1500 A	3600	3-4,2	4.015,00
CR ECG 2000 A	5400	3-4,2	5.433,00
CR ECG 2500 A	6300	3-4,2	6.234,00



Characteristics



- Self-supporting casing construction made of galvanized steel plate, finished in structural epoxy-polyester painting white colour RAL9016 as standard. Other colours or stainless steel are available on request.
- Micro-perforated inlet grille with filter functions and easy service. It does not need prefilter.
- Anodized aluminium outlet vanes, airfoil shaped, adjustable from 0 to 15° each side.
- EC Double-inlet centrifugal fans driven by an external rotor motor and low noise level, with very low consumption efficiency fans.
- “P” type with water heated coil. “E” type with electrical shielded elements, three stages with integrated regulation. “A” type without heating, air only. Optional expansion DX coil.
- Advanced Plug&Play control. Includes: Advanced PRO control with LCD display and integrated thermostat, door contact, 7m RJ11 cable and remote control. Optional: intelligent Clever Pro Control (automatic, programmable, ModBus for PKC, timer, etc.)

Specifications

Unheated			
Model	Nominal Airflow (m³/h)	Recommended Installation Range (m)	Price (€)
SB 1000 A	3060	3,5-5	2.988,00
SB 1500 A	4080	3,5-5	3.845,00
SB 2000 A	6120	3,5-5	4.940,00
SB 2500 A	7140	3,5-5	5.926,00
SB 3000 A	8160	3,5-5	6.726,00
BB 1000 A	4020	4-7	4.523,00
BB 1500 A	5360	4-7	5.699,00
BB 2000 A	8040	4-7	7.593,00
BB 2500 A	9380	4-7	8.963,00
BB 3000 A	10720	4-7	10.294,00

Electrical Heating				
Model	Nominal Airflow (m³/h)	Electrical Heating Capacity 400Vx3 (kW)	Recommended Installation Range (m)	Price (€)
SB 1000 E	3060	5/10/15	3,5-5	4.613,00
SB 1500 E	4080	7.5/15/22.5	3,5-5	5.904,00
SB 2000 E	6120	10/20/30	3,5-5	7.391,00
SB 2500 E	7140	12/22/34	3,5-5	8.874,00
SB 3000 E	8160	16/26/42	3,5-5	10.325,00
BB 1000 E	4020	6/15/21	4-7	6.352,00
BB 1500 E	5360	8/19/27	4-7	7.906,00
BB 2000 E	8040	12/30/42	4-7	10.282,00
BB 2500 E	9380	16/30/46	4-7	12.095,00
BB 3000 E	10720	20/30/50	4-7	13.842,00

Water Heating						
Model	Nominal Airflow (m³/h)	Recommended Installation Range (m)	Heating Capacity 80/60°C (kW)	Heating Capacity 60/40°C (kW)	Heating Capacity 50/40°C (kW)	Price (€)
SB 1000 P86	2910	3,5-5	15.58	-	-	3.501,00
SB 1500 P86	3880	3,5-5	19.71	-	-	4.482,00
SB 2000 P86	5820	3,5-5	31	-	-	5.724,00



Model	Water Heating					Price (€)
	Nominal Airflow (m³/h)	Recommended Installation Range (m)	Heating Capacity 80/60°C (kW)	Heating Capacity 60/40°C (kW)	Heating Capacity 50/40°C (kW)	
SB 2500 P86	6790	3,5-5	38.97	-	-	7.089,00
SB 3000 P86	7760	3,5-5	46.96	-	-	8.197,00
SB 1000 P64	2910	3,5-5	-	12.44	-	3.625,00
SB 1500 P64	3880	3,5-5	-	18.55	-	4.653,00
SB 2000 P64	5820	3,5-5	-	22.84	-	5.826,00
SB 2500 P64	6790	3,5-5	-	31.79	-	7.431,00
SB 3000 P64	7760	3,5-5	-	38.31	-	8.645,00
SB 1000 P54	2910	3,5-5	-	-	14.47	3.803,00
SB 1500 P54	3880	3,5-5	-	-	21.19	4.869,00
SB 2000 P54	5820	3,5-5	-	-	30.77	6.238,00
SB 2500 P54	6790	3,5-5	-	-	36.94	7.115,00
SB 3000 P54	7760	3,5-5	-	-	42.6	9.134,00
BB 1000 P86	3750	4-7	18,21	-	-	5.019,00
BB 1000 P64	3750	4-7	-	15,16	-	5.129,00
BB 1000 P54	3750	4-7	-	-	16,48	5.299,00
BB 1500 P86	5000	4-7	23,52	-	-	6.304,00
BB 1500 P64	5000	4-7	-	21,87	-	6.454,00
BB 1500 P54	5000	4-7	-	-	24,15	6.653,00
BB 2000 P86	7500	4-7	36,57	-	-	8.329,00
BB 2000 P64	7500	4-7	-	31,13	-	8.547,00
BB 2000 P54	7500	4-7	-	-	35,04	8.781,00
BB 2500 P86	8750	4-7	45,78	-	-	10.077,00
BB 2500 P64	8750	4-7	-	38,96	-	10.383,00
BB 2500 P54	8750	4-7	-	-	42,12	10.732,00
BB 3000 P86	10000	4-7	55,04	-	-	11.709,00
BB 3000 P64	10000	4-7	-	45,49	-	12.124,00
BB 3000 P54	10000	4-7	-	-	49,27	12.560,00



Characteristics



- Self-supporting casing construction made of galvanized steel plate, ready to be installed recessed in a false ceiling.
- Inlet grille (free of maintenance) made with aluminium profiles and blow-out nozzle, integrated in a single white frame colour RAL 9016. Other colours are available on request.
- Anodized aluminium outlet vanes, airfoil shaped, adjustable in both directions.
- EC Double-inlet centrifugal fans driven by an external rotor motor and low noise level, with very low consumption efficiency fans.
- “P” type with water heated coil. “E” type with electrical shielded elements, three stages with integrated regulation. “A” type without heating, air only. Optional expansion DX coil.
- Advanced Plug&Play control. Includes: Advanced PRO control with LCD display and integrated thermostat, door contact, 7m RJ11 cable and remote control. Optional: intelligent Clever Pro Control (automatic, programmable, ModBus for PKC, timer, etc.)

Specifications

Unheated			
Model	Nominal Airflow (m³/h)	Recommended Installation Range (m)	Price (€)
RSB 1000 A	3060	3,5-5	4.680,00
RSB 1500 A	4080	3,5-5	5.323,00
RSB 2000 A	6120	3,5-5	6.703,00
RSB 2500 A	7140	3,5-5	8.168,00
RBB 1000 A	4020	4-7	6.211,00
RBB 1500 A	5360	4-7	7.302,00
RBB 2000 A	8040	4-7	9.448,00
RBB 2500 A	9380	4-7	10.916,00

Electrical Heating				
Model	Nominal Airflow (m³/h)	Electrical Heating Capacity 400Vx3 (kW)	Recommended Installation Range (m)	Price (€)
RSB 1000 E	3060	5/10/15	3,5-5	6.305,00
RSB 1500 E	4080	7,5/15/22,5	3,5-5	7.383,00
RSB 2000 E	6120	10/20/30	3,5-5	9.154,00
RSB 2500 E	7140	12/22/34	3,5-5	11.116,00
RBB 1000 E	4020	6/15/21	4-7	8.031,00
RBB 1500 E	5360	8/19/27	4-7	9.367,00
RBB 2000 E	8040	12/30/42	4-7	11.771,00
RBB 2500 E	9380	16/30/46	4-7	13.577,00

Water Heating						
Model	Nominal Airflow (m³/h)	Recommended Installation Range (m)	Heating Capacity 80/60°C (kW)	Heating Capacity 60/40°C (kW)	Heating Capacity 50/40°C (kW)	Price (€)
RSB 1000 P86	2910	3,5-5	15.58	-	-	5.193,00
RSB 1500 P86	3880	3,5-5	19.71	-	-	5.960,00
RSB 2000 P86	5820	3,5-5	31	-	-	7.488,00
RSB 2500 P86	6790	3,5-5	38.97	-	-	9.331,00
RSB 1000 P64	2910	3,5-5	-	12.44	-	5.317,00
RSB 1500 P64	3880	3,5-5	-	18.55	-	6.132,00
RSB 2000 P64	5820	3,5-5	-	22.84	-	7.630,00
RSB 2500 P64	6790	3,5-5	-	31.79	-	9.673,00



Model	Water Heating					Price (€)
	Nominal Airflow (m³/h)	Recommended Installation Range (m)	Heating Capacity 80/60°C (kW)	Heating Capacity 60/40°C (kW)	Heating Capacity 50/40°C (kW)	
RSB 1000 P54	2910	3,5-5	-	-	14.47	5.495,00
RSB 1500 P54	3880	3,5-5	-	-	21.19	6.350,00
RSB 2000 P54	5820	3,5-5	-	-	30.77	8.001,00
RSB 2500 P54	6790	3,5-5	-	-	36.94	9.357,00
RBB 1000 P86	3750	4-7	18,21	-	-	6.712,00
RBB 1000 P64	3750	4-7	-	15,16	-	6.821,00
RBB 1000 P54	3750	4-7	-	-	16,48	6.986,00
RBB 1500 P86	5000	4-7	23,52	-	-	7.903,00
RBB 1500 P64	5000	4-7	-	21,87	-	8.052,00
RBB 1500 P54	5000	4-7	-	-	24,15	8.249,00
RBB 2000 P86	7500	4-7	36.57	-	-	10.180,00
RBB 2000 P64	7500	4-7	-	31,13	-	10.392,00
RBB 2000 P54	7500	4-7	-	-	35,04	10.627,00
RBB 2500 P86	8750	4-7	45.78	-	-	12.017,00
RBB 2500 P64	8750	4-7	-	38,96	-	12.322,00
RBB 2500 P54	8750	4-7	-	-	42,12	12.667,00



Characteristics



- Specially designed for applications where the body of the air curtain is to be installed inside a column or bulkhead for architectural reasons. It can be vertically or horizontally mounted.
- Self-supporting casing construction made of galvanized steel plate, finished in structural epoxy-polyester painting white colour RAL9016 as standard. Other colours or stainless steel are available on request.
- The air flow of Invisair follows a straight line from the air inlet grille to the to the discharge. Inlet area inside a bulkhead or column should be designed with suitable grille provided by others.
- Anodized aluminium outlet vanes, airfoil shaped, adjustable from 0 to 15° each side.
- EC Double-inlet centrifugal fans driven by an external rotor motor and low noise level, with very low consumption efficiency fans.
- “P” type with water heated coil. “E” type with electrical shielded elements, three stages with integrated regulation. “A” type without heating, air only. Optional expansion DX coil.
- Advanced Plug&Play control. Includes: Advanced PRO control with LCD display and integrated thermostat, door contact, 10m and remote control. With integrated functions: door delay (configurable); interface mode; operation, alarm and maintenance warning signals; and multiple digital inputs that modify the air curtain's operation.
- Includes protective varnish for the electronic board and control.
- Optional:
 - Auxiliary temperature sensors that improve air curtain control and increase energy savings.
 - Clever PRO intelligent control (automatic, programmable, ModBus via PLC, timer, etc.) with an additional temperature sensor.

Specifications

Unheated			
Model	Nominal Airflow (m³/h)	Recommended Installation Range (m)	Price (€)
IBB 1000 A	4020	5-7	6.769,00
IBB 1500 A	5360	5-7	7.611,00
IBB 2000 A	8040	5-7	9.301,00
IBB 2500 A	9380	5-7	11.010,00
IBB 3000 A	10720	5-7	12.651,00
ISB 1000 A	3060	3,5-5	5.383,00
ISB 1500 A	4080	3,5-5	5.783,00
ISB 2000 A	6120	3,5-5	6.583,00
ISB 2500 A	7140	3,5-5	7.840,00
ISB 3000 A	8160	3,5-5	9.027,00

Electrical Heating				
Model	Nominal Airflow (m³/h)	Electrical Heating Capacity 400Vx3 (kW)	Recommended Installation Range (m)	Price (€)
IBB 1000 E	4020	6/15/21	5-7	8.428,00
IBB 1500 E	5360	8/19/27	5-7	9.425,00
IBB 2000 E	8040	12/30/42	5-7	11.480,00
IBB 2500 E	9380	16/30/46	5-7	13.860,00
IBB 3000 E	10720	20/30/50	5-7	15.737,00
ISB 1000 E	3060	5/10/15	3,5-5	7.015,00
ISB 1500 E	4080	7,5/15/22,5	3,5-5	7.851,00
ISB 2000 E	6120	10/20/30	3,5-5	9.043,00
ISB 2500 E	7140	12/22/34	3,5-5	10.794,00



Electrical Heating				
Model	Nominal Airflow (m³/h)	Electrical Heating Capacity 400Vx3 (kW)	Recommended Installation Range (m)	Price (€)
ISB 3000 E	8160	16/26/42	3,5-5	12.634,00

Water Heating						
Model	Nominal Airflow (m³/h)	Recommended Installation Range (m)	Heating Capacity 80/60°C (kW)	Heating Capacity 60/40°C (kW)	Heating Capacity 50/40°C (kW)	Price (€)
IBB 1000 P86	3750	5-7	18.21	-	-	7.306,00
IBB 1500 P86	5000	5-7	23.52	-	-	8.277,00
IBB 2000 P86	7500	5-7	36.57	-	-	10.113,00
IBB 2500 P86	8750	5-7	45.78	-	-	12.207,00
IBB 3000 P86	10000	5-7	55.04	-	-	14.160,00
ISB 1000 P86	2910	3,5-5	15.58	-	-	5.912,00
ISB 1500 P86	3880	3,5-5	19.71	-	-	6.439,00
ISB 2000 P86	5820	3,5-5	31	-	-	7.385,00
ISB 2500 P86	6790	3,5-5	38.97	-	-	9.020,00
ISB 3000 P86	7760	3,5-5	46.96	-	-	10.514,00
IBB 1000 P64	3750	5-7	-	15.16	-	7.429,00
IBB 1500 P64	5000	5-7	-	21.87	-	8.451,00
IBB 2000 P64	7500	5-7	-	31.13	-	10.302,00
IBB 2500 P64	8750	5-7	-	38.96	-	12.300,00
IBB 3000 P64	10000	5-7	-	45.49	-	14.622,00
ISB 1000 P64	2910	3,5-5	-	12.44	-	6.035,00
ISB 1500 P64	3880	3,5-5	-	18.55	-	6.609,00
ISB 2000 P64	5820	3,5-5	-	22.84	-	7.572,00
ISB 2500 P64	6790	3,5-5	-	31.79	-	9.112,00
ISB 3000 P64	7760	3,5-5	-	38.31	-	10.972,00
IBB 1000 P54	3750	5-7	-	-	16.48	7.611,00
IBB 1500 P54	5000	5-7	-	-	24.15	8.673,00
IBB 2000 P54	7500	5-7	-	-	35.04	10.635,00
IBB 2500 P54	8750	5-7	-	-	42.12	12.417,00
IBB 3000 P54	10000	5-7	-	-	49.27	15.109,00
ISB 1000 P54	2910	3,5-5	-	-	14.47	6.213,00
ISB 1500 P54	3880	3,5-5	-	-	21.19	6.827,00
ISB 2000 P54	5820	3,5-5	-	-	30.77	7.899,00
ISB 2500 P54	6790	3,5-5	-	-	36.94	9.227,00
ISB 3000 P54	7760	3,5-5	-	-	42.6	11.451,00



Characteristics



- Decorative air curtain in contemporary architectural style. Its minimalist and smart design integrates in any environment and offers infinite options to customize.
- The panels can include logos, lighting, signage, safety or information signs, graphics, pictures, clocks, all according to customer specifications.
- Front anodized aluminium panels. Optionally manufactured in brushed or mirror polished stainless steel. Other materials are possible, such as galvanized steel, smooth or textured skinplate, wood, etc.
- Central structure made of galvanized steel finished in black forge as standard. Other colours are available on request.
- Anodized aluminium outlet vanes, airfoil shaped, adjustable in both directions.
- EC Double-inlet centrifugal fans driven by an external rotor motor and low noise level, with very low consumption efficiency fans.
- "P" type with water heated coil. "E" type with electrical shielded elements, three stages with integrated regulation. "A" type without heating, air only. Optional expansion DX coil.
- Advanced Plug&Play control. Includes: Advanced PRO control with LCD display and integrated thermostat, door contact, 7m RJ11 cable and remote control. Optional: intelligent Clever Pro Control (automatic, programmable, ModBus for PKC, timer, etc.)

Specifications

Unheated			
Model	Nominal Airflow (m³/h)	Recommended Installation Range (m)	Price (€)
ZEN BB 1000 A	4020	4-7	6.548,00
ZEN BB 1500 A	5360	4-7	7.562,00
ZEN BB 2000 A	8040	4-7	9.499,00
ZEN BB 2500 A	9380	4-7	10.736,00
ZEN SB 1000 A	3060	3,5-5	5.384,00
ZEN SB 1500 A	4080	3,5-5	5.193,00
ZEN SB 2000 A	6120	3,5-5	6.708,00
ZEN SB 2500 A	7140	3,5-5	7.736,00

Electrical Heating				
Model	Nominal Airflow (m³/h)	Electrical Heating Capacity 400Vx3 (kW)	Recommended Installation Range (m)	Price (€)
ZEN BB 1000 E	4020	6/15/21	4-7	8.076,00
ZEN BB 1500 E	5360	8/19/27	4-7	9.496,00
ZEN BB 2000 E	8040	12/30/42	4-7	11.896,00
ZEN BB 2500 E	9380	16/30/46	4-7	13.583,00
ZEN SB 1000 E	3060	5/10/15	3,5-5	7.048,00
ZEN SB 1500 E	4080	7,5/15/22,5	3,5-5	7.337,00
ZEN SB 2000 E	6120	10/20/30	3,5-5	9.224,00
ZEN SB 2500 E	7140	12/22/34	3,5-5	10.765,00

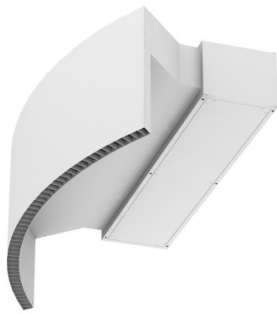
Water Heating						
Model	Nominal Airflow (m³/h)	Recommended Installation Range (m)	Heating Capacity 80/60°C (kW)	Heating Capacity 60/40°C (kW)	Heating Capacity 50/40°C (kW)	Price (€)
ZEN BB 1000 P86	3750	4-7	18,21	-	-	7.195,00
ZEN BB 1500 P86	5000	4-7	23,52	-	-	8.320,00
ZEN BB 2000 P86	7500	4-7	36,57	-	-	10.392,00
ZEN BB 2500 P86	8750	4-7	45,78	-	-	12.025,00
ZEN SB 1000 P86	2910	3,5-5	15,58	-	-	6.041,00



Model	Water Heating					Price (€)
	Nominal Airflow (m³/h)	Recommended Installation Range (m)	Heating Capacity 80/60°C (kW)	Heating Capacity 60/40°C (kW)	Heating Capacity 50/40°C (kW)	
ZEN SB 1500 P86	3880	3,5-5	19.71	-	-	5.980,00
ZEN SB 2000 P86	5820	3,5-5	31	-	-	7.648,00
ZEN SB 2500 P86	6790	3,5-5	38.97	-	-	9.068,00
ZEN BB 1000 P64	3750	4-7	-	15,16	-	7.310,00
ZEN BB 1500 P64	5000	4-7	-	21,87	-	8.576,00
ZEN BB 2000 P64	7500	4-7	-	31,13	-	10.623,00
ZEN BB 2500 P64	8750	4-7	-	38,96	-	12.346,00
ZEN SB 1000 P64	2910	3,5-5	-	12.44	-	6.169,00
ZEN SB 1500 P64	3880	3,5-5	-	18.55	-	6.159,00
ZEN SB 2000 P64	5820	3,5-5	-	22.84	-	7.910,00
ZEN SB 2500 P64	6790	3,5-5	-	31.79	-	9.426,00
ZEN BB 1000 P54	3750	4-7	-	-	16,48	7.512,00
ZEN BB 1500 P54	5000	4-7	-	-	24,15	8.682,00
ZEN BB 2000 P54	7500	4-7	-	-	35,04	10.866,00
ZEN BB 2500 P54	8750	4-7	-	-	42,12	12.712,00
ZEN SB 1000 P54	2910	3,5-5	-	-	14.47	6.386,00
ZEN SB 1500 P54	3880	3,5-5	-	-	21.19	6.387,00
ZEN SB 2000 P54	5820	3,5-5	-	-	30.77	8.185,00
ZEN SB 2500 P54	6790	3,5-5	-	-	36.94	9.828,00



Characteristics



- Specially designed to be installed in all type of revolving doors. Two possible layouts, tailored dimensions.
- Self-supporting casing construction made of galvanized steel plate, finished in structural epoxy-polyester painting white colour RAL9016 as standard. Other colours or stainless steel are available on request.
- Large faceted inlet grille avoiding intensive maintenance.
- Circular anodized aluminium outlet vanes, airfoil shaped.
- Low noise double-inlet centrifugal fans with external rotor motor. 5-speed controller. EC models assembled with very low consumption efficiency fans.
- “P” type with water heated coil. “E” type with electrical shielded elements, three stages with integrated regulation. “A” type without heating, air only. Optional expansion DX coil.
- Advanced Plug&Play control. Includes: Advanced PRO control with LCD display and integrated thermostat, door contact, 10m and remote control. With integrated functions: door delay (configurable); interface mode; operation, alarm and maintenance warning signals; and multiple digital inputs that modify the air curtain's operation.
- Includes protective varnish for the electronic board and control.
- Optional:
 - Auxiliary temperature sensors that improve air curtain control and increase energy savings.
 - Clever PRO intelligent control (automatic, programmable, ModBus via PLC, timer, etc.) with an additional temperature sensor.

Specifications

Unheated			
Model	Nominal Airflow (m³/h)	Recommended Installation Range (m)	Price (€)
ROTO BB 1000 A	4020	5-7	10.410,00
ROTO BB 1500 A	5360	5-7	11.667,00
ROTO BB 2000 A	8040	5-7	13.938,00
ROTO BB 2500 A	9380	5-7	16.479,00
ROTO SB 1000 A	3060	3,5-5	10.410,00
ROTO SB 1500 A	4080	3,5-5	11.667,00
ROTO SB 2000 A	6120	3,5-5	13.938,00
ROTO SB 2500 A	7140	3,5-5	16.479,00

Electrical Heating					
Model	Nominal Airflow (m³/h)	Electrical Heating Capacity 400Vx3 (kW)	Recommended Installation Range (m)	Heating Capacity 60/40°C (kW)	Price (€)
ROTO BB 1000 E	4020	6/15/21	5-7	-	12.279,00
ROTO BB 1500 E	5360	8/19/27	5-7	-	14.235,00
ROTO BB 2000 E	8040	12/30/42	5-7	-	17.031,00
ROTO BB 2500 E	9380	16/30/46	5-7	-	20.427,00
ROTO SB 1000 E	2910	5/10/15	3,5-5	12,44	12.279,00
ROTO SB 1500 E	4080	7,5/15/22,5	3,5-5	-	14.235,00
ROTO SB 2000 E	6120	10/20/30	3,5-5	-	17.031,00
ROTO SB 2500 E	7140	12/22/34	3,5-5	-	20.427,00

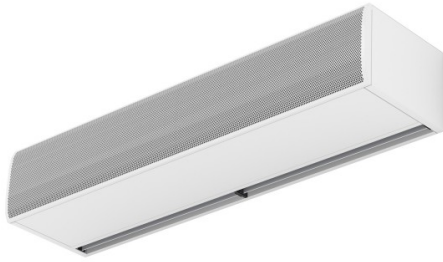
Water Heating						
Model	Nominal Airflow (m³/h)	Recommended Installation Range (m)	Heating Capacity 80/60°C (kW)	Heating Capacity 60/40°C (kW)	Heating Capacity 50/40°C (kW)	Price (€)
ROTO BB 1000 P86	3750	5-7	18.21	-	-	10.977,00



Model	Water Heating					Price (€)
	Nominal Airflow (m³/h)	Recommended Installation Range (m)	Heating Capacity 80/60°C (kW)	Heating Capacity 60/40°C (kW)	Heating Capacity 50/40°C (kW)	
ROTO BB 1500 P86	5000	5-7	45.78	-	-	12.369,00
ROTO BB 2000 P86	7500	5-7	21.87	-	-	14.793,00
ROTO BB 2500 P86	8750	5-7	45.49	-	-	17.736,00
ROTO SB 1000 P86	2910	3,5-5	15,58	-	-	10.977,00
ROTO SB 1500 P86	3880	3,5-5	19,71	-	-	12.369,00
ROTO SB 2000 P86	5820	3,5-5	31	-	-	14.793,00
ROTO SB 2500 P86	6790	3,5-5	38,97	-	-	17.736,00
ROTO BB 1000 P64	3750	5-7	-	23.52	-	11.106,00
ROTO BB 1500 P64	5000	5-7	-	55.04	-	12.549,00
ROTO BB 2000 P64	7500	5-7	-	31.13	-	14.991,00
ROTO BB 2500 P64	8750	5-7	-	16.48	-	17.835,00
ROTO SB 1000 P64	2910	3,5-5	-	12.44	-	11.106,00
ROTO SB 1500 P64	3880	3,5-5	-	18,55	-	12.549,00
ROTO SB 2000 P64	5820	3,5-5	-	22,84	-	14.991,00
ROTO SB 2500 P64	6790	3,5-5	-	31,79	-	17.835,00
ROTO BB 1000 P54	3750	5-7	-	-	36.57	11.298,00
ROTO BB 1500 P54	5000	5-7	-	-	15.16	12.783,00
ROTO BB 2000 P54	7500	5-7	-	-	38.96	15.339,00
ROTO BB 2500 P54	8750	5-7	-	-	24.15	17.958,00
ROTO SB 1000 P54	2910	3,5-5	-	-	14,47	11.298,00
ROTO SB 1500 P54	3880	3,5-5	-	-	21,19	12.783,00
ROTO SB 2000 P54	5820	3,5-5	-	-	30,77	15.339,00
ROTO SB 2500 P54	6790	3,5-5	-	-	36,94	17.958,00



Characteristics



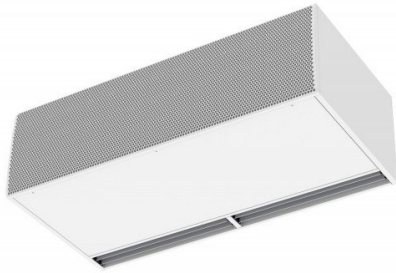
- Specially designed to be installed in doors of cold stores.
- Self-supporting casing construction made of galvanized steel plate, finished in structural epoxy-polyester painting white colour RAL9016 as standard. Other colours or stainless steel are available on request.
- Large faceted inlet grille avoiding intensive maintenance. Also available with flat micro-perforated inlet grille, more elegant for commercial doors where heating is not needed.
- Anodized aluminium outlet vanes, airfoil shaped, adjustable from 0 to 15° each side.
- EC Double-inlet centrifugal fans driven by an external rotor motor and low noise level, with very low consumption efficiency fans.
- “A” type without heating, air only.
- Advanced Plug&Play control. Includes: Advanced PRO control with LCD display and integrated thermostat, door contact, 10m and remote control. With integrated functions: door delay (configurable); interface mode; operation, alarm and maintenance warning signals; and multiple digital inputs that modify the air curtain's operation.
- Includes protective varnish for the electronic board and control.
- Optional:
 - Auxiliary temperature sensors that improve air curtain control and increase energy savings.
 - Clever PRO intelligent control (automatic, programmable, ModBus via PLC, timer, etc.) with an additional temperature sensor.
- Includes varnishing on the PCB to protect it from corrosion.

Specifications

Model	Unheated		Price (€)
	Nominal Airflow (m³/h)	Recommended Installation Range (m)	
KBB 1000 A	3900	5-7	4.623,00
KBB 1500 A	5200	5-7	5.878,00
KBB 2000 A	7800	5-7	8.170,00
KBB 2500 A	9100	5-7	9.678,00
KBB 3000 A	10400	5-7	11.146,00
KSB 1000 A	3060	3,5-5	3.240,00
KSB 1500 A	4080	3,5-5	4.082,00
KSB 2000 A	6120	3,5-5	5.134,00
KSB 2500 A	7140	3,5-5	6.194,00
KSB 3000 A	8160	3,5-5	7.146,00



Characteristics



- Self-supporting casing construction made of galvanized steel plate, finished in structural epoxy-polyester painting white colour RAL9016 as standard. Other colours or stainless steel are available on request.
- Two frontal grille options: Industrial perforated (by default), commercial microperforated.
- Anodized aluminium outlet vanes, airfoil shaped, adjustable from 0 to 15° each side.
- Low noise double-inlet centrifugal fans with external rotor motor. 5-speed controller.
- “P” type with water heated coil. “E” type with electrical shielded elements, three stages with integrated regulation. “A” type without heating, air only. Optional expansion DX coil.
- Advanced Plug&Play control. Includes: Advanced PRO control with LCD display and integrated thermostat, door contact, 10m RJ11 cable and remote control. Optional: intelligent Clever Pro Control (automatic, programmable, ModBus for PKC, timer, etc.)

Specifications

Unheated			
Model	Nominal Airflow (m³/h)	Recommended Installation Range (m)	Price (€)
L 1000 A	4000	4-5	4.385,00
L 1000 A 400Vx3	-	4-5	8.461,00
L 1500 A	6000	4-5	5.486,00
L 1500 A 400Vx3	-	4-5	10.106,00
L 2000 A	8000	4-5	7.068,00
L 2000 A 400Vx3	-	4-5	11.993,00
L 2500 A	10000	4-5	8.404,00
L 2500 A 400Vx3	-	4-5	16.250,00
L 3000 A	12000	4-5	10.012,00
L 3000 A 400Vx3	-	4-5	18.647,00
XL 1000 A	5300	5-7	4.784,00
XL 1000 A 400Vx3	5800	5-7	9.261,00
XL 1500 A	7950	5-7	6.343,00
XL 1500 A 400Vx3	8700	5-7	11.093,00
XL 2000 A	10600	5-7	7.739,00
XL 2000 A 400Vx3	11600	5-7	13.166,00
XL 2500 A	13250	5-7	9.544,00
XL 2500 A 400Vx3	14500	5-7	17.836,00
XL 3000 A	15900	5-7	11.286,00
XL 3000 A 400Vx3	17400	5-7	20.541,00

Electrical Heating				
Model	Nominal Airflow (m³/h)	Electrical Heating Capacity 400Vx3 (kW)	Recommended Installation Range (m)	Price (€)
L 1000 E	4000	6/13/19	4-5	6.020,00
L 1000 E-25	4000	10/15/25	4-5	6.116,00
L 1500 E	6000	8/22,5/30,5	4-5	8.205,00
L 1500 E-37,5	6000	15/22,5/37,5	4-5	8.252,00
L 2000 E	8000	12/30/40	4-5	10.182,00
L 2000 E-50	8000	20/30/50	4-5	10.276,00
L 2500 E	10000	20/30/50	4-5	12.106,00



Model	Electrical Heating			Price (€)
	Nominal Airflow (m³/h)	Electrical Heating Capacity 400Vx3 (kW)	Recommended Installation Range (m)	
L 2500 E-60	10000	20/40/60	4-5	12.222,00
L 3000 E	12000	20/50/60	4-5	14.357,00
L 3000 E-70	12000	20/40/70	4-5	15.301,00
XL 1000 E	5300	10/15/25	5-7	6.637,00
XL 1000 E-35	5300	10/25/35	5-7	7.181,00
XL 1500 E	7950	15/22,5/37,5	5-7	9.325,00
XL 1500 E-52	7950	15/37,5/52,5	5-7	9.856,00
XL 2000 E	10600	20/30/50	5-7	11.262,00
XL 2000 E-70	10600	20/50/70	5-7	11.705,00
XL 2500 E	13250	20/40/60	5-7	13.533,00
XL 2500 E-70	13250	20/50/70	5-7	13.941,00
XL 3000 E	15900	20/50/70	5-7	15.616,00
XL 3000 E-80	15900	30/50/80	5-7	16.487,00

Model	Nominal Airflow (m³/h)	Recommended Installation Range (m)	Water Heating			Price (€)
			Heating Capacity 80/60°C (kW)	Heating Capacity 60/40°C (kW)	Heating Capacity 50/40°C (kW)	
L 1000 P64	3800	4-5	-	16,18	-	5.245,00
L 1000 P54	3800	4-5	-	-	17,18	5.490,00
L 1000 P86	3800	4-5	19,68	-	-	5.140,00
L 1500 P64	5700	4-5	-	25,92	-	7.708,00
L 1500 P54	5700	4-5	-	-	29,04	6.907,00
L 1500 P86	5700	4-5	29,64	-	-	6.409,00
L 2000 P64	7600	4-5	-	35,58	-	8.445,00
L 2000 P54	7600	4-5	-	-	38,93	8.785,00
L 2000 P86	7600	4-5	43,01	-	-	8.210,00
L 2500 P64	9500	4-5	-	45,55	-	10.371,00
L 2500 P54	9500	4-5	-	-	49,36	10.859,00
L 2500 P86	9500	4-5	56,01	-	-	10.040,00
L 3000 P64	11400	4-5	-	56,78	-	12.544,00
L 3000 P54	11400	4-5	-	-	59,96	13.152,00
L 3000 P86	11400	4-5	69,27	-	-	12.040,00
XL 1000 P64	4900	5-7	-	18,98	-	5.720,00
XL 1000 P54	4900	5-7	-	-	20,43	5.985,00
XL 1000 P86	4900	5-7	22,68	-	-	5.607,00
XL 1500 P64	7350	5-7	-	30,45	-	7.562,00
XL 1500 P54	7350	5-7	-	-	34,55	7.889,00
XL 1500 P86	7350	5-7	34,52	-	-	7.349,00
XL 2000 P64	9800	5-7	-	41,83	-	9.237,00
XL 2000 P54	9800	5-7	-	-	46,36	9.604,00
XL 2000 P86	9800	5-7	50,1	-	-	8.975,00
XL 2500 P64	12250	5-7	-	53,56	-	11.679,00
XL 2500 P54	12250	5-7	-	-	58,81	12.208,00
XL 2500 P86	12250	5-7	65,29	-	-	11.320,00
XL 3000 P64	14700	5-7	-	66,78	-	14.041,00
XL 3000 P54	14700	5-7	-	-	71,47	14.707,00
XL 3000 P86	14700	5-7	80,79	-	-	13.491,00



Characteristics



- High performance industrial air curtain for vertical or horizontal installations for large industrial doors. Available in 1.5, 2.0, 2.5, 3.0 and 3.5 meters length. Easy dockable modules to reach large dimensions.
- Heavy self-supporting casing construction made of galvanized steel plate, finished in structural epoxy-polyester painting white colour RAL9016 as standard. Other colours are available on request.
- Double outlet with Coanda effect to achieve larger and efficient air jet. Anodized aluminium outlet vanes, airfoil shaped, adjustable from 0 to 15° each side.
- High efficiency and low noise axial fans, driven with external rotor motor single phase 230V. Optionally three phase 400V. Maintenance free. EC models assembled with very low consumption efficiency fans.
- “P” type with water heated coil. “E” type with electrical shielded elements, three stages with integrated regulation. “A” type without heating, air only.
- Regulation not included. Optional: Advanced PRO control with LCD display and integrated thermostat, door contact, 10m RJ11 cable and remote control. Intelligent Clever Pro Control (automatic, programmable, ModBus for PKC, timer, etc.)

Specifications

Unheated				
Model	Nominal Airflow (m³/h)		Recommended Installation Range (m)	Price (€)
MXW 1500 A	7000		4-6	3.308,00
MXW 1500 A W/R	7000		4-6	3.897,00
MXW 2000 A	10500		4-6	4.264,00
MXW 2000 A W/R	10500		4-6	4.856,00
MXW 2500 A	14000		4-6	5.383,00
MXW 2500 A W/R	14000		4-6	5.958,00
MXW 3000 A	17500		4-6	6.897,00
MXW 3000 A W/R	17500		4-6	7.479,00
MXW 3500 A	20800		4-6	9.322,00
MXW 3500 A W/R	20800		4-6	9.907,00
MXW EC 1500 A W/R	9200		6-8	5.780,00
MXW EC 2000 A W/R	13800		6-8	7.962,00
MXW EC 2500 A W/R	18400		6-8	10.312,00
MXW EC 3000 A W/R	23000		6-8	12.967,00
MXW EC 3500 A W/R	27600		6-8	16.403,00
MXW 1500 A 400Vx3	7000		4-6	3.704,00
MXW 1500 A 400Vx3 W/R	7000		4-6	7.624,00
MXW 2000 A 400Vx3	10500		4-6	4.814,00
MXW 2000 A 400Vx3 W/R	10500		4-6	8.885,00
MXW 2500 A 400Vx3	14000		4-6	6.106,00
MXW 2500 A 400Vx3 W/R	14000		4-6	10.331,00
MXW 3000 A 400Vx3	17500		4-6	7.803,00
MXW 3000 A 400Vx3 W/R	17500		4-6	12.268,00
MXW 3500 A 400Vx3	20800		4-6	10.458,00
MXW 3500 A 400Vx3 W/R	20800		4-6	17.508,00

Electrical Heating				
Model	Nominal Airflow (m³/h)	Electrical Heating Capacity 400Vx3 (kW)	Recommended Installation Range (m)	Price (€)
MXW 1500 E W/R	7000	10/25/35	4-6	7.274,00



Electrical Heating					
Model	Nominal Airflow (m³/h)	Electrical Heating Capacity 400Vx3 (kW)	Recommended Installation Range (m)	Price (€)	
MXW EC 1500 E W/R	9200	10/25/35	6-8	6.490,00	
MXW 2000 E W/R	10500	20/30/50	4-6	8.423,00	
MXW EC 2000 E W/R	13800	20/30/50	6-8	8.927,00	
MXW 2500 E W/R	14000	30/40/70	4-6	9.710,00	
MXW EC 2500 E W/R	18400	30/40/70	6-8	11.508,00	
MXW 3000 E W/R	17500	30/50/80	4-6	11.447,00	
MXW EC 3000 E W/R	23000	30/50/80	6-8	14.551,00	
MXW 3500 E W/R	20800	30/60/90	4-6	13.175,00	
MXW EC 3500 E W/R	27600	30/60/90	6-8	18.255,00	
MXW 1500 E 400Vx3 W/R	8700	10/25/35	4-6	10.722,00	
MXW 2000 E 400Vx3 W/R	13050	20/30/50	4-6	12.060,00	
MXW 2500 E 400Vx3 W/R	17400	30/40/70	4-6	14.134,00	
MXW 3000 E 400Vx3 W/R	21750	30/50/80	4-6	16.153,00	
MXW 3500 E 400Vx3 W/R	26100	30/60/90	4-6	20.146,00	

Water Heating					
Model	Nominal Airflow (m³/h)	Recommended Installation Range (m)	Heating Capacity 80/60°C (kW) (kW)	Heating Capacity 60/40°C (kW) (kW)	Price (€)
MXW 1500 P86	6800	4-6	40,69	-	3.931,00
MXW 1500 P86 W/R	6800	4-6	40,69	-	4.542,00
MXW 1500 P64	6800	4-6	-	34,09	4.146,00
MXW 1500 P64 W/R	6800	4-6	-	34,09	4.752,00
MXW 2000 P86	10200	4-6	56,29	-	5.112,00
MXW 2000 P86 W/R	10200	4-6	56,29	-	5.722,00
MXW 2000 P64	10200	4-6	-	50,16	5.400,00
MXW 2000 P64 W/R	10200	4-6	-	50,16	6.007,00
MXW 2500 P86	13600	4-6	76,97	-	6.433,00
MXW 2500 P86 W/R	13600	4-6	76,97	-	7.039,00
MXW 2500 P64	13600	4-6	-	66,19	6.793,00
MXW 2500 P64 W/R	13600	4-6	-	66,19	7.392,00
MXW 3000 P86	17000	4-6	97,77	-	8.207,00
MXW 3000 P86 W/R	17000	4-6	97,77	-	8.813,00
MXW 3000 P64	17000	4-6	-	82,22	8.752,00
MXW 3000 P64 W/R	17000	4-6	-	82,22	9.363,00
MXW 3500 P86	20300	4-6	118,28	-	10.914,00
MXW 3500 P86 W/R	20300	4-6	118,28	-	11.521,00
MXW 3500 P64	20300	4-6	-	97,92	11.503,00
MXW 3500 P64 W/R	20300	4-6	-	97,92	12.107,00
MXW EC 1500 P86 W/R	8600	6-8	47.72	-	6.311,00
MXW EC 1500 P64 W/R	8600	6-8	-	39.6	6.490,00
MXW EC 2000 P86 W/R	12900	6-8	64.77	-	8.686,00
MXW EC 2000 P64 W/R	12900	6-8	-	58.2	8.927,00
MXW EC 2500 P86 W/R	17200	6-8	87.02	-	11.204,00
MXW EC 2500 P64 W/R	17200	6-8	-	75.36	11.508,00
MXW EC 3000 P86 W/R	21500	6-8	109.36	-	14.083,00
MXW EC 3000 P64 W/R	21500	6-8	-	92.53	14.551,00
MXW EC 3500 P86 W/R	25800	6-8	131.42	-	17.758,00
MXW EC 3500 P64 W/R	25800	6-8	-	110.14	18.255,00
MXW 1500 P86 400Vx3	6800	4-6	41.39	-	4.352,00



Model	Nominal Airflow (m³/h)	Water Heating		Heating Capacity 80/60°C (kW) (kW)	Heating Capacity 60/40°C (kW) (kW)	Price (€)
		Recommended Installation Range (m)				
MXW 1500 P86 400Vx3 W/R	6800	4-6		41.39	-	8.382,00
MXW 1500 P64 400Vx3	6800	4-6		-	34.09	4.580,00
MXW 1500 P64 400Vx3 W/R	6800	4-6		-	34.09	8.626,00
MXW 2000 P86 400Vx3	10200	4-6		61.25	-	5.699,00
MXW 2000 P86 400Vx3 W/R	10200	4-6		61.25	-	9.909,00
MXW 2000 P64 400Vx3	10200	4-6		-	50.16	6.001,00
MXW 2000 P64 400Vx3 W/R	10200	4-6		-	50.16	10.251,00
MXW 2500 P86 400Vx3	13600	4-6		80.05	-	7.207,00
MXW 2500 P86 400Vx3 W/R	13600	4-6		80.05	-	11.596,00
MXW 2500 P64 400Vx3	13600	4-6		-	66.19	7.574,00
MXW 2500 P64 400Vx3 W/R	13600	4-6		-	66.19	12.015,00
MXW 3000 P86 400Vx3	17000	4-6		99.88	-	9.175,00
MXW 3000 P86 400Vx3 W/R	17000	4-6		99.88	-	13.844,00
MXW 3000 P64 400Vx3	17000	4-6		-	92.28	9.745,00
MXW 3000 P64 400Vx3 W/R	17000	4-6		-	92.28	14.498,00
MXW 3500 P86 400Vx3	20300	4-6		118.28	-	12.117,00
MXW 3500 P86 400Vx3 W/R	20300	4-6		118.28	-	19.426,00
MXW 3500 P64 400Vx3	20300	4-6		-	97.92	12.731,00
MXW 3500 P64 400Vx3 W/R	20300	4-6		-	97.92	20.123,00



Characteristics



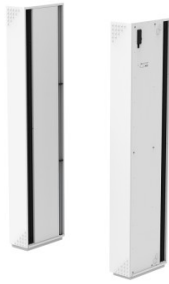
- Specially designed to be installed in cold room doors with temperatures above 0°C
- Self-supporting casing construction made of galvanized steel plate, finished in structural epoxy-polyester painting white colour RAL9016 as standard. Other colours or stainless steel are available on request.
- Large faceted inlet grille avoiding intensive maintenance.
- Anodized aluminium outlet vanes, airfoil shaped.
- Low noise twisted cross-flow fans driven by a 2-speed external rotor motor.
- "A" type without heating, air only.
- It includes a Stepless regulator, with a quick start Kick-start function, which allows the supply air speed to be varied continuously (without jumps).

Specifications

Unheated			
Model	Nominal Airflow (m³/h)	Recommended Installation Range (m)	Price (€)
OPT K 1000 A	1650	3	1.122,00
OPT K 1500 A	2365	3	1.314,00
OPT K 2000 A	3190	3	1.809,00



Characteristics



- Specially designed to be installed on doors of industrial cold stores and freezers with big temperature differences.
- The TWIN KOOL air curtain system has been designed to offer a versatile solution for any type of cold room. It has two jets of opposing air chambers that create additional space between the chamber and the pre-chamber. Thanks to the double barrier, this model becomes the perfect alternative to the TRIOJET SYSTEM air curtain when space is limited or this model is not an option.
- Self-supporting casing construction made of galvanized steel plate, finished in structural epoxy-polyester painting white colour RAL9016 as standard. Other colours or stainless steel are available on request.
- Large faceted inlet grille avoiding intensive maintenance.
- Anodized aluminium outlet vanes, airfoil shaped, adjustable from 0 to 15° each side.
- Low noise double-inlet centrifugal fans with external rotor motor. 5-speed controller. EC models assembled with very low consumption efficiency fans.
- “A” type without heating, air only.
- Advanced Plug&Play control. Includes: Advanced PRO control with LCD display and integrated thermostat, door contact, 7m and remote control. With integrated functions: door delay (configurable); interface mode; operation, alarm and maintenance warning signals; and multiple digital inputs that modify the air curtain's operation.
- Includes protective varnish for the electronic board and control.
- Optional:
 - Auxiliary temperature sensors that improve air curtain control and increase energy savings.
 - Clever PRO intelligent control (automatic, programmable, ModBus via PLC, timer, etc.) with an additional temperature sensor.
- Includes varnishing on the PCB to protect it from corrosion.

Specifications

Model	Unheated		Price (€)
	Nominal Airflow (m³/h)	Recommended Installation Range (m)	
TWIN KECG 3000 A	14400	9,8-13,8	15.393,00
TWIN KM 1500 A	5400	9,8-13,1	5.634,00
TWIN KM 2000 A	7200	9,8-13,1	6.909,00
TWIN KM 2500 A	9000	9,8-13,1	7.983,00
TWIN KM 3000 A	10800	9,8-13,1	11.826,00
TWIN KECM 1500 A	5520	9,8-13,8	6.612,00
TWIN KECM 2000 A	7360	9,8-13,8	8.223,00
TWIN KECM 2500 A	9200	9,8-13,8	9.600,00
TWIN KECM 3000 A	11040	9,8-13,8	13.860,00
TWIN KG 1500 A	6400	9,8-13,1	6.399,00
TWIN KG 2000 A	9600	9,8-13,1	8.004,00
TWIN KG 2500 A	11200	9,8-13,1	9.066,00
TWIN KG 3000 A	12800	9,8-13,1	12.870,00
TWIN KECG 1500 A	7200	9,8-13,8	7.593,00
TWIN KECG 2000 A	10800	9,8-13,8	9.786,00
TWIN KECG 2500 A	12600	9,8-13,8	11.169,00



Characteristics



- Specially designed to be installed on doors of industrial cold stores and freezers with big temperature differences.
- The TWIN KOOL air curtain system has been designed to offer a versatile solution for any type of cold room. It has two jets of opposing air chambers that create additional space between the chamber and the pre-chamber. Thanks to the double barrier, this model becomes the perfect alternative to the TRIOJET SYSTEM air curtain when space is limited or this model is not an option.
- Self-supporting casing construction made of galvanized steel plate, finished in structural epoxy-polyester painting white colour RAL9016 as standard. Other colours or stainless steel are available on request.
- Large faceted inlet grille avoiding intensive maintenance.
- Anodized aluminium outlet vanes, airfoil shaped, adjustable from 0 to 15° each side.
- Low noise double-inlet centrifugal fans with external rotor motor. 5-speed controller. EC models assembled with very low consumption efficiency fans.
- “A” type without heating, air only.
- Advanced Plug&Play control. Includes: Advanced PRO control with LCD display and integrated thermostat, door contact, 7m and remote control. With integrated functions: door delay (configurable); interface mode; operation, alarm and maintenance warning signals; and multiple digital inputs that modify the air curtain's operation.
- Includes protective varnish for the electronic board and control.
- Optional:
 - Auxiliary temperature sensors that improve air curtain control and increase energy savings.
 - Clever PRO intelligent control (automatic, programmable, ModBus via PLC, timer, etc.) with an additional temperature sensor.
- Includes varnishing on the PCB to protect it from corrosion.

Specifications

Model	Unheated		Price (€)
	Nominal Airflow (m³/h)	Recommended Installation Range (m)	
TWIN KPL M 1500 A	5400	9,8-13,1	5.769,00
TWIN KPL M 2000 A	7200	9,8-13,1	6.858,00
TWIN KPL M 2500 A	9000	9,8-13,1	8.436,00
TWIN KPL M 3000 A	10800	9,8-13,1	11.184,00
TWIN KPL ECM 1500 A	5520	9,8-13,8	6.741,00
TWIN KPL ECM 2000 A	7360	9,8-13,8	8.175,00
TWIN KPL ECM 2500 A	9200	9,8-13,8	10.038,00
TWIN KPL ECM 3000 A	11040	9,8-13,8	13.167,00
TWIN KPL G 1500 A	6400	9,8-13,1	6.351,00
TWIN KPL G 2000 A	9600	9,8-13,1	7.965,00
TWIN KPL G 2500 A	11200	9,8-13,1	9.522,00
TWIN KPL G 3000 A	12800	9,8-13,1	12.243,00
TWIN KPL ECG 1500 A	7200	9,8-13,8	7.521,00
TWIN KPL ECG 2000 A	10800	9,8-13,8	9.726,00
TWIN KPL ECG 2500 A	12600	9,8-13,8	11.634,00
TWIN KPL ECG 3000 A	14400	9,8-13,8	14.712,00



Characteristics



- Specially designed to be installed on doors of industrial cold stores and freezers with big temperature differences.
- Reduces mist, snow and ice decreasing risk of accidents.
- System composed by two air curtains: Special Duojet air curtain with plenum and Kool air curtain. The result is a combination system of 3 jets at different temperatures and different speeds.
- High efficiency barrier against big amount of thermal losses due to a big temperature difference (shorter payback).
- Structure support with lateral walls to cover 100% of the opening with 3 jets should be provided by others.
- Self-supporting casing construction made of stainless steel plate. Galvanized steel structural epoxy-polyester painting white RAL9016 or other colors under request.
- Large faceted inlet grille avoiding intensive maintenance.
- Anodized aluminium outlet vanes, airfoil shaped, adjustable from 0 to 15° each side.
- Duojet with IP55 AC centrifugal fans and Kool with EC fans (both double inlet, external rotor motors and built-in thermal protection contact). All provided with 5-speed selection, very low noise level.
- Includes electrical shielded element of 3 power stages with integrated regulation.
- Triojet is automatically fully controlled by Clever Control. Electronics and controller protected inside IP65 boxes. Plug & Play connections.
- Ready for BMS connection via Modbus RTU.

Specifications

Model	Nominal Airflow (m³/h)	Electrical Heating		Recommended Installation Range (m)	Price (€)
		Electrical Heating Capacity 400Vx3 (kW)			
TRIOJET SYSTEM 1000	5900	3/6/9		2-4	12.981,00
TRIOJET SYSTEM 1000 INOX	5900	3/6/9		2-4	19.636,00
TRIOJET SYSTEM 1500 INOX	8400	4/8/12		2-4	23.421,00
TRIOJET SYSTEM 1500	8400	4/8/12		2-4	16.681,00
TRIOJET SYSTEM 2000 INOX	11800	6/12/18		2-4	28.198,00
TRIOJET SYSTEM 2000	11800	6/12/18		2-4	20.587,00
TRIOJET SYSTEM 2500 INOX	14300	6/12/18		2-4	31.881,00
TRIOJET SYSTEM 2500	14300	6/12/18		2-4	24.412,00
TRIOJET SYSTEM 3000 INOX	16800	8/16/24		2-4	36.922,00
TRIOJET SYSTEM 3000	16800	8/16/24		2-4	28.130,00



Characteristics



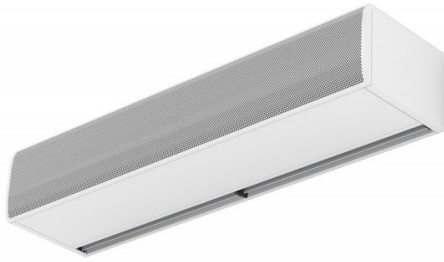
- Specially designed for insects control at windows such as food establishments and industry, tollbooth and kiosks.
- High velocity air barrier to prevent flying insects from entering a building.
- Valid for service windows according to NSF 37 standard.
- Self-supporting casing construction made of galvanized steel plate, finished in structural epoxy-polyester painting white colour RAL9016 as standard. Other colours or stainless steel are available on request.
- Large faceted inlet grille avoiding intensive maintenance.
- Anodized aluminium outlet vanes, airfoil shaped, adjustable in both directions.
- Low noise double-inlet centrifugal fans with external rotor motor. 2-speed controller.
- "A" type without heating, air only.
- Included regulation with infrared remote control and inbuilt keypad with leds.

Specifications

Model	Unheated		Price (€)
	Nominal Airflow (m ³ /h)	Recommended Installation Range (m)	
COMPACT FLY 600 A	1150	-	1.394,00
COMPACT FLY 900 A	1725	-	1.752,00



Characteristics



- Specially designed for insects control at entranceways such as food establishments and industry, hospitals or clean zones.
- High velocity air barrier to prevent flying insects from entering a building.
- Up to 2 meters height doors according to NSF 37 standard.
- Self-supporting casing construction made of galvanized steel plate, finished in structural epoxy-polyester painting white colour RAL9016 as standard. Other colours or stainless steel are available on request.
- Large faceted inlet grille avoiding intensive maintenance.
- Anodized aluminium outlet vanes, airfoil shaped, adjustable from 0 to 15° each side.
- EC Double-inlet centrifugal fans driven by an external rotor motor and low noise level, with very low consumption efficiency fans.
- "A" type without heating, air only.
- Advanced Plug&Play control. Includes: Advanced PRO control with LCD display, door contact, 7m RJ11 cable and remote control. Optional: Clever control (programmable, automatic, intelligent, energy saving, Modbus RTU for BMS...)

Specifications

Model	Unheated		Price (€)
	Nominal Airflow (m³/h)	Recommended Installation Range (m)	
FLY K 1000 A	2700	2	2.759,00
FLY K 1500 A	3600	2	3.391,00
FLY K 2000 A	5400	2	4.542,00
FLY K 2500 A	6300	2	5.459,00
FLY K 3000 A	7200	2	7.052,00

Characteristics



- Specially designed for insects control at entranceways such as food establishments and industry, hospitals or clean zones.
- High velocity air barrier to prevent flying insects from entering a building.
- Up to 2,3 meters height doors according to NSF 37 standard.
- Self-supporting casing construction made of galvanized steel plate, finished in structural epoxy-polyester painting white colour RAL9016 as standard. Other colours or stainless steel are available on request.
- Large faceted inlet grille avoiding intensive maintenance.
- Anodized aluminium outlet vanes, airfoil shaped, adjustable from 0 to 15° each side.
- EC Double-inlet centrifugal fans driven by an external rotor motor and low noise level, with very low consumption efficiency fans.
- "A" type without heating, air only.
- Advanced Plug&Play control. Includes: Advanced PRO control with LCD display and integrated thermostat, door contact, 7m and remote control. With integrated functions: door delay (configurable); interface mode; operation, alarm and maintenance warning signals; and multiple digital inputs that modify the air curtain's operation.
- Includes protective varnish for the electronic board and control.
- Optional:
 - Auxiliary temperature sensors that improve air curtain control and increase energy savings.
 - Clever PRO intelligent control (automatic, programmable, ModBus via PLC, timer, etc.) with an additional temperature sensor.

Specifications

Model	Unheated		
	Nominal Airflow (m ³ /h)	Recommended Installation Range (m)	Price (€)
FLY KSB 1000 A	3060	2.3	3.240,00
FLY KSB 1500 A	4080	2.3	4.082,00
FLY KSB 2000 A	6120	2.3	5.134,00
FLY KSB 2500 A	7140	2.3	6.194,00
FLY KSB 3000 A	8160	2.3	7.146,00



Characteristics



- Specially designed for insects control at entranceways such as food establishments and industry, hospitals or clean zones.
- High velocity air barrier to prevent flying insects from entering a building.
- Up to 3,5 meters height doors according to NSF 37 standard.
- Self-supporting casing construction made of galvanized steel plate, finished in structural epoxy-polyester painting white colour RAL9016 as standard. Other colours or stainless steel are available on request.
- Large faceted inlet grille avoiding intensive maintenance.
- Anodized aluminium outlet vanes, airfoil shaped, adjustable from 0 to 15° each side.
- EC Double-inlet centrifugal fans driven by an external rotor motor and low noise level, with very low consumption efficiency fans.
- "A" type without heating, air only.
- Advanced Plug&Play control. Includes: Advanced PRO control with LCD display, door contact, 7m RJ11 cable and remote control. Optional: Clever control (programmable, automatic, intelligent, energy saving, Modbus RTU for BMS...)

Specifications

Model	Unheated			Price (€)
	Nominal Airflow (m³/h)	Recommended Installation Range (m)		
FLY KBB 1000 A	3900	3,5		4.623,00
FLY KBB 1500 A	5200	3,5		5.878,00
FLY KBB 2000 A	7800	3,5		8.170,00
FLY KBB 2500 A	9100	3,5		9.678,00
FLY KBB 3000 A	10400	3,5		11.146,00



Characteristics



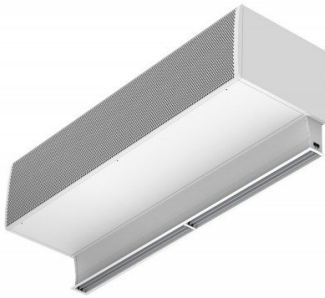
- Specially designed for insects control at entranceways such as food establishments and industry, hospitals or clean zones.
- High velocity air barrier to prevent flying insects from entering a building.
- Up to 3 meters height doors according to NSF 37 standard.
- Self-supporting casing construction made of galvanized steel plate, finished in structural epoxy-polyester painting white colour RAL9016 as standard. Other colours or stainless steel are available on request.
- Large faceted inlet grille avoiding intensive maintenance.
- Includes antiinsects outlet kit with anodized aluminium outlet vanes, airfoil shaped, adjustable from 0 to 15° each side.
- “A” type without heating, air only.
- Advanced Plug&Play control. Includes: Advanced PRO control with LCD display, door contact, 10m RJ11 cable and remote control. Optional: Clever control (programmable, automatic, intelligent, energy saving, Modbus RTU for BMS...)

Specifications

Unheated			
Model	Nominal Airflow (m³/h)	Recommended Installation Range (m)	Price (€)
FLY KL 1000 A	4000	3	4.930,00
FLY KL 1500 A	6000	3	6.083,00
FLY KL 2000 A	8000	3	7.758,00
FLY KL 2500 A	10000	3	9.170,00
FLY KL 3000 A	12000	3	11.173,00



Characteristics



- Specially designed for insects control at entranceways such as food establishments and industry, hospitals or clean zones.
- High velocity air barrier to prevent flying insects from entering a building.
- Up to 4 meters height doors according to NSF 37 standard.
- Self-supporting casing construction made of galvanized steel plate, finished in structural epoxy-polyester painting white colour RAL9016 as standard. Other colours or stainless steel are available on request.
- Large faceted inlet grille avoiding intensive maintenance.
- Includes antiinsects outlet kit with anodized aluminium outlet vanes, airfoil shaped, adjustable from 0 to 15° each side.
- “A” type without heating, air only.
- Advanced Plug&Play control. Includes: Advanced PRO control with LCD display, door contact, 10m RJ11 cable and remote control. Optional: Clever control (programmable, automatic, intelligent, energy saving, Modbus RTU for BMS...)

Specifications

Model	Unheated			Price (€)
	Nominal Airflow (m³/h)	Recommended Installation Range (m)		
FLY KXL 1000 A	5300	4		5.329,00
FLY KXL 1500 A	7950	4		6.940,00
FLY KXL 2000 A	10600	4		8.429,00
FLY KXL 2500 A	13250	4		10.310,00
FLY KXL 3000 A	15900	4		12.447,00



Characteristics



- Compact air curtain specially designed for vehicles that carry air conditioned loads.
- Savings up to 30% in fuel consumption.
- Self-supporting aluminium frame.
- Includes bracket with quick-fixing system for ceiling installation.
- Perforated inlet grille to avoid intensive maintenance service.
- Compact low voltage 24V DC fans designed to operate between -25 °C and 50 °C.
- Customised curtain length from 850 mm to 2,430 mm to suit any type of transport vehicle: vans, trucks, trailers, vehicles with roll-up doors, etc.

Specifications

Model	Air Flow (m³/h)	Unheated		Weight (kg)	Price (€)
		Current fans (A)	Power fans (kW)		
AIRTRACK 1000	830	3	0,072	5,8	Consult
AIRTRACK 2430	2000	7,0	0,190	14	Consult



Clever Control



Clever Control automatically adapts the functioning of the air curtain to the entrance conditions, maintaining comfort while saving energy.
It optimizes the ventilation and heating to make an efficient barrier for an optimal climate separation.

Reference	Unit price (€)
CLEVER KIT II (AC 2S-A)	528,00
CLEVER KIT II (AC 2S-W)	528,00
CLEVER KIT II (AC 2S-E)	528,00
CLEVER KIT II (AC 5S-A)	528,00
CLEVER KIT II (AC 5S-W)	528,00
CLEVER KIT II (AC 5S-E)	528,00
CLEVER PCB II (AC 2S-A)	335,00
CLEVER PCB II (AC 2S-W)	335,00
CLEVER PCB II (AC 2S-E)	335,00
CLEVER PCB II (AC 5S-A)	335,00
CLEVER PCB II (AC 5S-W)	335,00
CLEVER PCB II (AC 5S-E)	335,00

Clever Pro



Clever Pro Control automatically adapts the functioning of the air curtain to the entrance conditions, maintaining comfort while saving energy.
It optimizes the ventilation and heating to make an efficient barrier for an optimal climate separation.

Reference	Unit price (€)
CLEVER PRO (AC)	252,00



IR control

Infrared remote controller for all models (except Minibel).

Reference	Unit price (€)
IR-AIR	25,00



External temperature sensor - RJ45

It permits to measure the temperature in a different room that the one that is controlled. It is compatible with Clever Control.

Reference	Unit price (€)
TS	28,00



External temperature sensor - PRO Controls

It permits to measure the temperature in a different room that the one that is controlled. It is compatible with standard and Clever Pro controls.

Reference	Unit price (€)
TS-EXT 5m	39,00
TS-TUBE/INT 2m	39,00



RJ45 cable

Connection cable between the controller and the air curtain.
CB4/7/10/20/50 of 4, 7, 10, 20 and 50 meters.

Reference	Unit price (€)
CB4-RJ45	19,00
CB7-RJ45	23,00
CB10-RJ45	29,00
CB20-RJ45	37,00
CB50-RJ45	72,00



RJ11 cable (Clever Kit)

Connection cable between the Clever control and the air curtain.
CB7 of 7 meters.
CB20 of 20 meters.

Reference	Unit price (€)
CB7-RJ11	21,00
CB20-RJ11 Shielded	113,00



RJ11 Cable (Clever Pro)

7m
Connection cable between the Clever control and the air curtain.
CB7 of 7 meters.
CB20 of 20 meters.

Reference	Unit price (€)
CB7-RJ11/4 (2024)	23,00
CB20-RJ11/4 (2024)	37,00



Solenoid valve



It turns ON/OFF the heating by opening or closing the hot water inlet valve to the water coil.
The air curtain supplies 230Vx1 to open the valve.

V-ACT: independent valve of the pressure that allows to adjust the flow.

Reference	Unit price (€)
V-S 1/2"	101,00
V-ACT ON/OFF DN15 1/2"	231,00
V-S 3/4"	124,00
V-ACT ON/OFF DN20 3/4"	248,00
V-S 1"	196,00
V-ACT ON/OFF DN25L 1"	286,00
V-S 1 1/4"	313,00
V-S 1 1/2"	425,00

Modulating valve



It allows the opening of the valve from 0 to 100% to modulate the heating. Regulating the heating proportionally, you can adjust the temperature better while achieving higher energy saving.

V-ACT: independent valve of the pressure that allows to adjust the flow.

Reference	Unit price (€)
V-ACT 0-10V DN15 1/2"	331,00
V-ACT 0-10V DN20 3/4"	381,00
V-ACT 0-10V DN25L 1"	415,00
	Consult

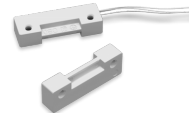
3 ways thermostatic valve



It allows a proportional control of the outlet air temperature.

Reference	Unit price (€)
V-T DN20 3/4"	419,00
V-T DN25 1"	398,00
V-T DN40 1 1/2"	839,00

Door contact



To operate the equipment according to the state of the door (open/closed).
MAG model magnetic contact,
MEC model mechanical contact.

Reference	Unit price (€)
DC-MAG	12,00
DC-MEC	71,00



Wall support

To anchor the air curtains to the wall, for following models: Zen (SPT4-XXXX), Kool (SPT3), Optima (SPT2) and Minibel (SPT1).

Reference	Unit price (€)
SPT1	13,00
SPT2	17,00
SPT3	21,00
SPT4-1000	257,00
SPT4-1500	305,00
SPT4-2000	305,00
SPT4-2500	305,00
SPT4-1000 BB	300,00
SPT4-1500 BB	352,00
SPT4-2000 BB	352,00
SPT4-2500 BB	352,00



Tension support

Stainless cable of easy installation with shackle. Threaded end M8/10, of 1 or 5 meters (1M/5M). Other lengths under request.

Reference	Unit price (€)
SPCT-M8 1M	17,00
SPCT-M8 5M	27,00
SPCT-M10 1M	38,00
SPCT-M10 5M	54,00



Vibration dampers

It attenuates possible vibrations and avoids the transmission of sound frequencies.

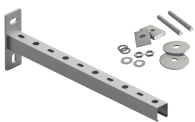
Reference	Unit price (€)
SLB-M8	8,00
SLB-M10	24,00



Angle support

Angle support with silenblock to attenuate possible vibrations and avoid the transmission of sound frequencies. Ideal for recessed units.

Reference	Unit price (€)
SPANG-SIL	6,00



Universal wall support

It allows the hanging installation for any type of air curtains. Available in different lengths, for all models.

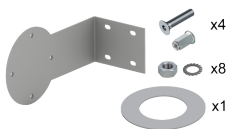
Reference	Unit price (€)
SPWR-350	52,00
SPWR-400	54,00
SPWR-640	82,00
SPWR-720	90,00



Universal wall support VR

It allows the hanging installation for any type of air curtains. It incorporates a vertical guide rail to increase the anchor area. Available in different lengths, for all models.

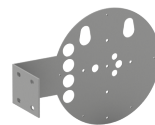
Reference	Unit price (€)
SPWR-640 VR	133,00
SPWR-720 VR	133,00
SPWR-800 VR	139,00
SPWR-1040 VR	224,00



Rund angle support tailor-made

Rund air curtain anchors for lateral wall or ceiling. They are custom-made (the number indicates the maximum distance between the center of the air curtain and the wall or ceiling). S/S Models in Stainless Steel.

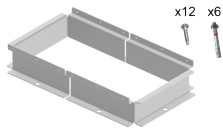
Reference	Unit price (€)
SPANG-RUND-500	845,00
SPANG-RUND-1000	1.002,00
SPANG-RUND-1500	1.166,00
SPANG-RUND-500 S/S	1.550,00
SPANG-RUND-1000 S/S	2.080,00
SPANG-RUND-1500 S/S	2.028,00



Joining & Rund support

To join and support 2 Rund air curtains. They are custom-made (number indicates maximum distance between center of air curtain and wall/ceiling). Thus, it is possible to join several air curtains to obtain all lengths. S/S Models in Stainless Steel.

Reference	Unit price (€)
SPANG-INT-RUND-500	668,00
SPANG-INT-RUND-500 S/S	1.757,00



Feet for vertical installation

For air curtain vertical mounting. Includes metal pieces for floor anchor.
S/S Models in Stainless Steel.

Reference	Unit price (€)
SPF-ZEN	435,00
SPF-RUND	292,00
SPF-BB	51,00
SPF-ZEN SB-BB	497,00
SPF-L,XL	314,00
SPF-INV	105,00
SPF-KOOL	110,00
SPF-MAXWELL	116,00
SPF-MAX	113,00
SPF-ZEN S/S	673,00
SPF-RUND S/S	451,00
SPF-L,XL S/S	458,00
SPF-KOOL S/S	315,00



Installation kit for 2 air curtains piled up in vertical

To join two units and its anchor to the wall.
S/S Models in Stainless Steel.

Reference	Unit price (€)
SPJ2-M,ECM,G,ECG,DAM	99,00
SPJM-ZEN	58,00
SPJ2-ZEN	104,00
SPJ2-RUND	224,00
SPJ2-L,XL	141,00
SPJ2-INV	79,00
SPJ2-KOOL	91,00
SPJ2-MAXWELL	87,00
SPJ2-MAX	94,00
SPJ2-M,ECM,G,ECG,DAM S/S	244,00



Optima joint

To join 2 or more Optima air curtains making all lengths possible.

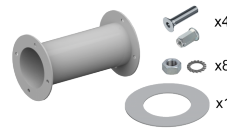
Reference	Unit price (€)
SPJM-OPT	41,00



Arm/Goalpost Rund tailored

Anchorage for the lateral of Rund air curtains to wall, ceiling or floor (goalpost). It is tailor-made (the number indicates the max. length of the arm).
S/S Models in Stainless Steel.

Reference	Unit price (€)
SPARM-90-1000	2.630,00
SPARM-90-1500	2.923,00
SPARM-90-2000	2.688,00
SPARM-90-2500	3.512,00
SPARM-90-3000	3.917,00
SPARM-90-3500	5.895,00
SPARM-90-1000 S/S	2.876,00
SPARM-90-1500 S/S	4.062,00
SPARM-90-2000 S/S	3.898,00
SPARM-90-2500 S/S	5.289,00
SPARM-90-3000 S/S	5.889,00
SPARM-90-3500 S/S	5.431,00



Rund straight arm tailor-made

Rund air curtain anchors for lateral walls. They are tailor-manufactured (the number indicates the maximum distance between the center of the air curtain and the wall).
S/S Models in Stainless Steel.

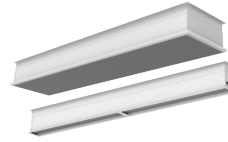
Reference	Unit price (€)
SPARM-180-1000	1.447,00
SPARM-180-2000	2.614,00
SPARM-180-1000 S/S	1.826,00
SPARM-180-2000 S/S	3.127,00



Plenum

Accessory to convert a free hanging Windbox to a visible false ceiling installation.

Reference	Unit price (€)
DE 1000 M-ECM-G-ECG	293,00
DE 1500 M-ECM-G-ECG	330,00
DE 2000 M-ECM-G-ECG	395,00
DE 2500 M-ECM-G-ECG	450,00
DE 3000 M-ECM-G-ECG	1.402,00
DE 1000 BB	506,00
DE 1500 BB	765,00
DE 2000 BB	816,00
DE 2500 BB	914,00
DE 3000 BB	1.516,00
DE 1000 L-XL	643,00
DE 1500 L-XL	719,00
DE 2000 L-XL	806,00
DE 2500 L-XL	914,00
DE 3000 L-XL	1.706,00



False ceiling kit

Inlet and Outlet Kit for an invisible false ceiling installation (only visible the inlet and outlet). The telescopic kits allow to adjust the height between 160-210mm

Requires also the Plenum accessory.

Reference	Unit price (€)
ID+OD 1000 M-ECM-G-ECG	495,00
ID+OD 1500 M-ECM-G-ECG	593,00
ID+OD 2000 M-ECM-G-ECG	713,00
ID+OD 2500 M-ECM-G-ECG	780,00
ID+OD 3000 M-ECM-G-ECG	1.828,00
ID+OD 1000 L-XL	1.097,00
ID+OD 1500 L-XL	1.206,00
ID+OD 2000 L-XL	1.384,00
ID+OD 2500 L-XL	1.546,00
ID+OD 3000 L-XL	2.513,00



1. GENERAL

When placing any orders with Airtècnics Motors i Ventiladors, S.L., the buyer accepts these general conditions of sale in their entirety. In case of the existence of conditions proposed by the buyer, these will have to be expressly agreed and corroborated in writing by our Directorship. In case of disagreement, our sales conditions will always prevail over the buyer's conditions. All our products are for industrial use or consumption and not for domestic use or consumption.

2. PRICES

Prices are expressed in €, VAT or other additional taxes separately, packing taking place in our warehouse. Due to the variations in the cost of the materials or the possible fluctuation of some currencies, we reserve the right of modification of the prices of our price list without previous notice.

3. ORDERS

All orders must be made in writing, indicating the exact reference of the purchased goods and the model and/or goods description. In case of previous agreed prices or specific general conditions, these must be included in the order. In case of cancellation, the expenses are to be met by the buyer. We do not consider the cancellation of special equipments (or equipments of difficult sale), if they are already on their manufacture process.

4. DELIVERY TIME

The delivery time, even if accepted in writing by our directorship, is always indicative. The possible delays in the delivery will not be the object of economical claims, either in case of previous agreements, if the delay is due to force majeure or reasons beyond our control.

5. SHIPMENT

Whatever are the delivery conditions, the risk in the goods are to be met by the buyer. In case of damages during the reception, the buyer must immediately submit a claim to the carrier so, if proceeds, we can replace the damaged goods, with charge to the consignee insurance.

6. PAYMENT CONDITIONS

The customer's payments are to be paid cash except when our Directorship, with the acceptance of our insurer Crédito y Caución, concedes them open credit. In this case the details and payment's deadlines will be agreed by both parts, but they will never exceed 90 days.

7. TITLE OF THE GOODS

The seller, Airtècnics Motors i Ventiladors, S.L., reserves title of the goods until payment in full of the price and all incidentals.

8. RETURN OF GOODS

We do not accept any return of goods without our previous authorization in writing and, in this in case, the goods must be in perfect state, both from the inside and outside and with its original packaging. The costs caused by the checking of the goods will be met by the buyer, with a maximum of 5% depending on the type of product.

9. GUARANTEE

Our guarantee is valid for a period of one year from the date of purchase, except in the case that the manufacturer decides to extend it. We will adjust, repair or replace at our discretion from our warehouse any defect, system failure or part found to be defective. The assembly and transport costs out of our warehouse is at buyer expense. The products that, in our eyes, have been inadequately used, incorrectly manipulated, improperly installed, connected to different nominal tensions, modified, repaired by non-authorized workers or that have suffered damages during transport are totally excluded from the guarantee.

10. RESPONSIBILITIES

It is exclusively responsibility of the buyer to take the necessary security measures for that in case of failure of any of our products, no damages are made to third equipments, installations or people.

11. LAW AND JURISDICTION

All disputes arising out of this contract shall be governed by the law of the country of the seller and submitted to the courts of Sabadell, expressly renouncing to any other privileges that could concern them, even in the case of bills to be paid in another town.



Conca de Barberà, 6 - Pol. Ind. Pla de la Bruguera
E-08211 Castellar del Vallès (Barcelona) Spain
☎ + 34 93 715 99 88
airtechnics@airtechnics.com

www.airtechnics.com

CE UK
CA

