

ChangeOver



Change Over

The Change Over 2026 system is a controller designed to manage the operation of one or two fans or groups of fans with a maximum power of 2 kW (8.8 A), ensuring service continuity and safety in ventilation installations.

Its main function is to ensure operational redundancy, allowing the system to automatically activate a second backup fan in the event of a fan failure. This concept is especially critical in applications where ventilation is essential for the safety or proper operation of the installation.

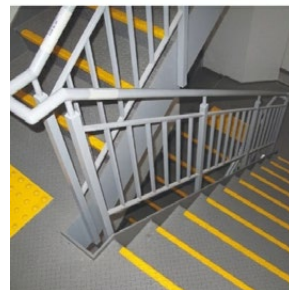
The unit allows the management of both non-regulated (ON/OFF) and regulated fans (controlled via 0–10 V), adapting to different types of motors and control systems, while incorporating multiple failure detection methods to ensure reliable system supervision.



Applications

The Change Over system is designed for use in installations where reliability, service continuity, and airflow control are required, including:

- Parking facilities: Smoke and gas extraction systems, priority operation with automatic backup
- Restaurants and industrial kitchens: Extraction and air supply control, prevention of smoke migration to public areas
- Emergency stairwells: Pressurization systems, improved evacuation conditions in the event of fire
- Technical rooms or enclosed spaces: Positive or negative pressure control, air renewal according to environmental conditions



Technical Description



2-fan control

Management of up to 2 fans with automatic backup



Operating modes

Fixed or alternating operation between fans



Universal compatibility

Compatible with AC and EC fans, single-phase and three-phase



Maximum power

Up to 2 kW per fan or group



Speed control

Regulation via 0–10 V, menu, or Modbus



Failure detection

Supervision by current, RPM, or alarm signal



Integrated inputs

Support for digital and analog signals



Control outputs

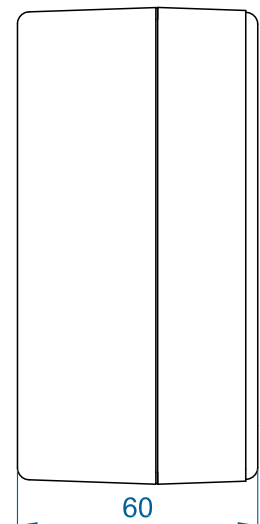
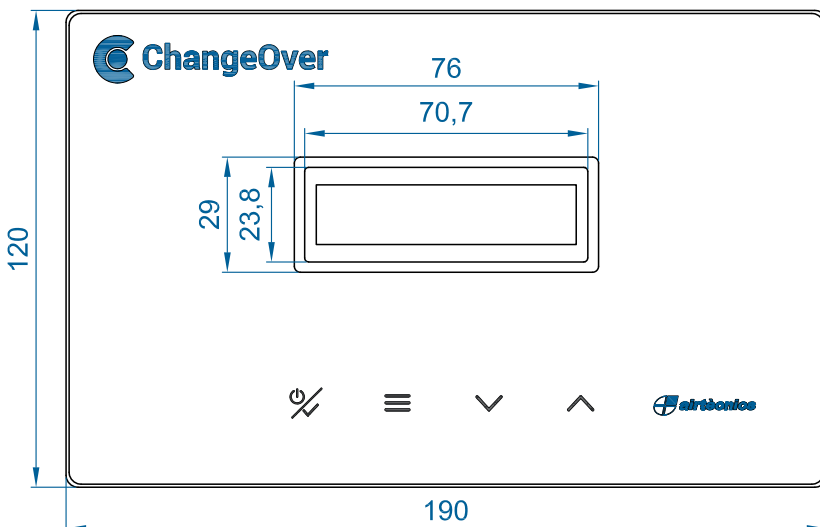
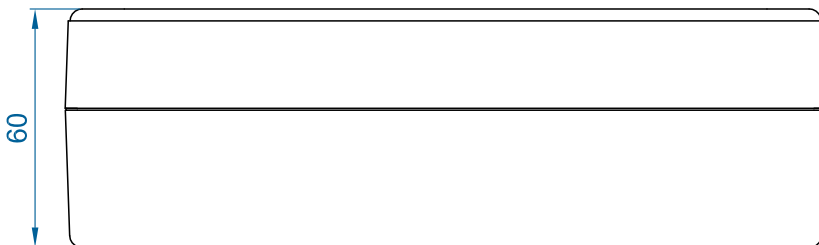
Integrated signalling and control



Fire mode

Specific function for forced smoke extraction

Dimensions



Features

Automatic operational redundancy

The Change Over continuously supervises the status of the fans. In the event of a failure, it immediately activates the backup fan and generates the alarm signal, without interruption of service. Compatible with single-phase AC fans and compatible with single-phase and three-phase EC fans (regulated and non-regulated).

Operating modes

- Same Fan (Fixed): The system always operates with the same fan. In the event of a failure, it automatically switches over to the backup fan. Suitable for installations with a primary fan and a backup fan..
- Alternate Fan (Alternating): Automatically alternates between the two fans according to a configurable interval (1 min – 24 h). Distributes wear between both units, facilitating maintenance.

Configurable failure detection

- By current: Detection based on deviation from the calibrated value. Typical range 0.06 – 8.88 A. Can be combined with RPM or alarm detection.
- By RPM: Mainly applicable to EC fans. Configurable pulses-per-revolution reading (1–10). RPM values above the calibrated value do not generate a switchover.
- By fan alarm: External signal from the fan (thermistor or other contact). Configurable NO/NC polarity. Cannot be combined simultaneously with RPM (they share the same input).

Fire mode

The Fire ON and Fire MAX inputs force operation at maximum speed. In Fire ON mode, if the active fan fails, the system automatically switches over to the backup fan, also at maximum speed. Fire MAX mode activates both fans simultaneously at maximum speed.

Integration with external systems

Modbus RTU (Slave) communication for BMS integration. RJ11 port for additional modules: Clever Pro, pressure, temperature, humidity, and gas sensors. Possibility of connection to an external LCD-TFT display for remote supervision.

Connections

| Connection | Description |
|---------------------------|---|
| Power IN | 230 V AC / 50 Hz power supply |
| Fan A / Fan B | 230 V AC power output – max. 2 kW per output (T10A fuse) |
| Aout Fan A / Aout Fan B | 0–10 V analog output – speed control for regulated fans |
| RPM/Alarm A / RPM/Alarm B | RPM signal or alarm input per fan (observe polarity) |
| Fire ON | Digital input – fire mode with automatic switchover in the event of failure |
| Fire MAX | Digital input – both fans at maximum speed simultaneously |
| Forced OFF | Digital input – forced shutdown of the unit |
| Ain2 (0–10 V) | External speed analog input. Active between 2–10 V (proportional) |
| Run (NO/NC) | Relay output – indicates that at least one fan is running |
| Fail (NO/NC) | Relay output – indicates the presence of an active alarm |
| Modbus RTU | Communication with BMS or control systems (Slave, RS485) |
| RJ11 | Internal communication – connection of additional modules |
| 24 V DC OUT | 24 V DC auxiliary output |