



**Characteristics**



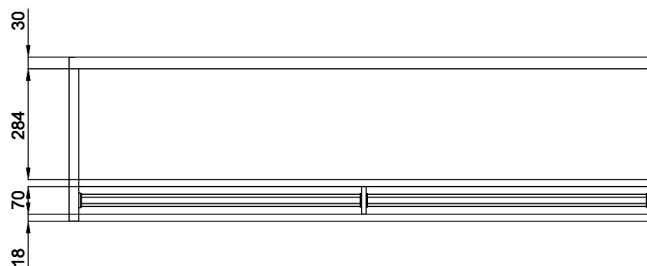
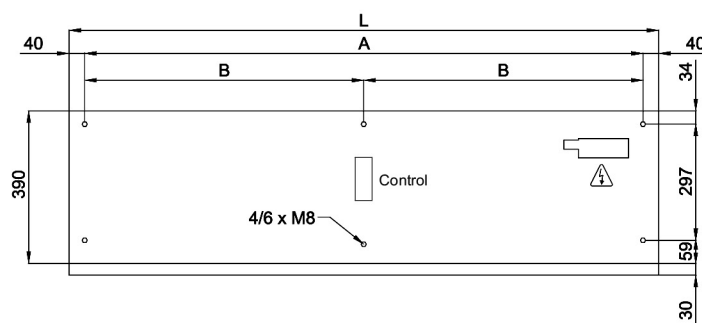
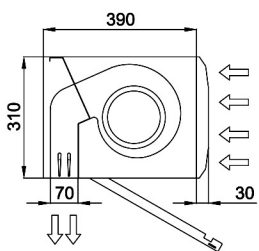
- Specially designed for insects control at entranceways such as food establishments and industry, hospitals or clean zones.
  - High velocity air barrier to prevent flying insects from entering a building. Up to 3,5m height doors according to NSF 37 standard
  - Self-supporting casing construction made of galvanized steel plate, finished in structural epoxy-polyester painting white colour RAL9016 as standard. Other colours or stainless steel are available on request.
  - Large perforated inlet grille avoiding intensive maintenance.
  - Anodized aluminium outlet vanes, airfoil shaped, adjustable from 0 to 15° each side.
  - EC Double-inlet centrifugal fans driven by an external rotor motor and low noise level, with very low consumption efficiency fans.
  - "A" type without heating, air only.
  - Includes Plug&Play Hand Auto control with 7m RJ45 cable and magnetical door contact.
- Optional: Clever control (programmable, automatic, intelligent, energy saving, Modbus RTU for BMS...).

**Specifications**

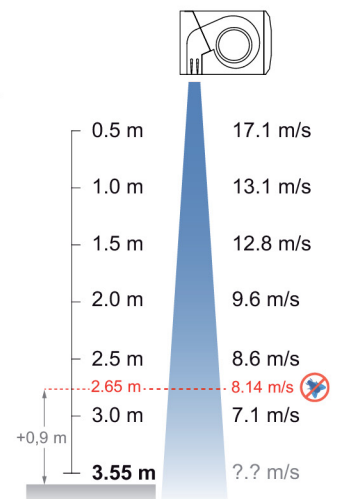
**AIR ONLY**

Model	Airflow m <sup>3</sup> /h	Power Fans 230V-50Hz kW	Current Fans 230V-50Hz A	Noise Level (5 m) dB(A)	Weight kg
FLY KBB 1000 A	3900	0,921	4,08	67	38
FLY KBB 1500 A	5200	1,228	5,44	67,5	62
FLY KBB 2000 A	7800	1,842	8,16	68	77
FLY KBB 2500 A	9100	2,149	9,52	68,5	93
FLY KBB 3000 A	10400	2,456	10,88	69	106

**Dimensions**



L	A	B
1000	920	-
1500	1420	710
2000	1920	960
2500	2420	1210
3000	2920	1460



According to standard NSF-37-2012, the maximum installation height is the speed profile point at 8,14m/s plus 0,9m. So FLY KBB can be used until 2,65m+0,9m=3,55m.