



Technical Features



RAL 9016 standard



Stainless steel



Other colors on request



Range
Up to 4 m



Heating type
Unheated



Casing [*]
Galvanised steel



Airflow / Length
5300 - 15900 m³/h
1 m to 3 m



Heating capacity

-



Inlet grille
Circular perforated



Fans
Centrifugal
5-speed



Control
Plug&Play Hand Auto
(Optional Clever Control)



Outlet lamellas
Aluminium, airfoil type
Adjustable 0-15° each side

[*] Customizable dimensions on request

FLY KXL is recommended to reduce the passage of insects across industrial service doors up to 4 meters high.

A robust and versatile insect control air curtain, provided with an extensor outlet kit to optimize the air outlet with the minimum turbulence at maximum speed. Works with double-inlet centrifugal fans driven by an external rotor motor and low noise level.

Elegant and timeless design, with large perforated inlet grille avoiding intensive maintenance.

Includes Plug&Play Hand Auto control with 10m RJ45 cable and magnetical door contact. Optionally can be regulated with Advanced Clever Control (programmable, automatic, intelligent, compatible with Modbus RTU for BMS).

❄ UNHEATED

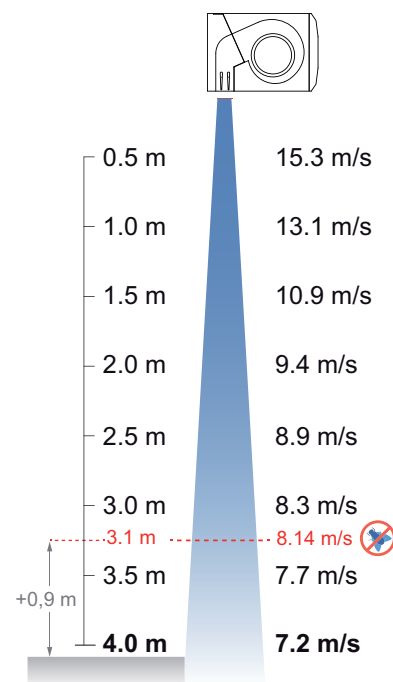
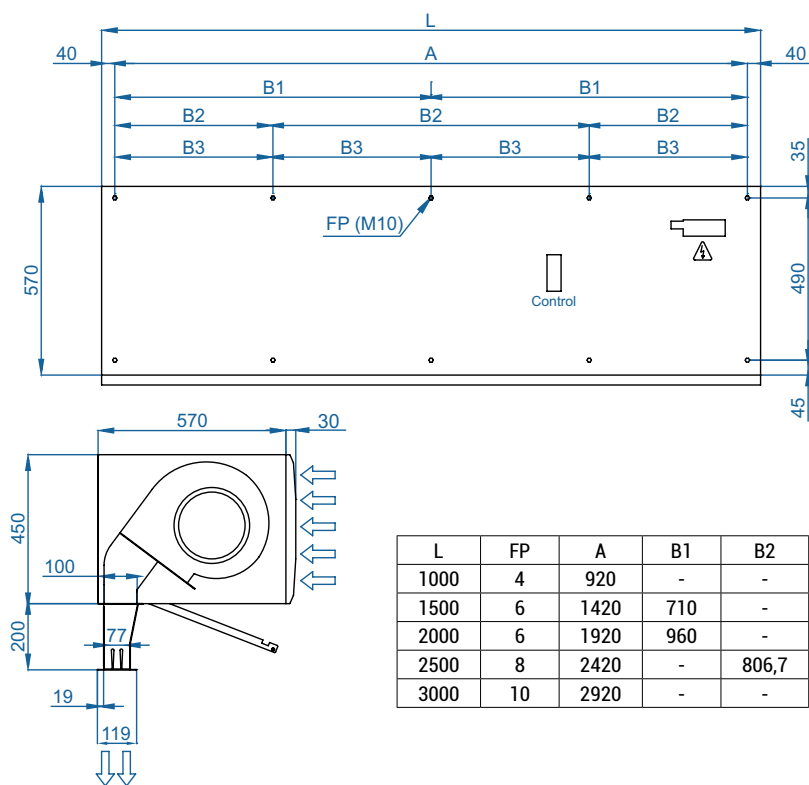
| Model | Airflow m ³ /h | Ventilation power | | Ventilation current | | Noise Level (5 m) dB(A) | Weight kg |
|----------------|------------------------------|-------------------|-----------------|---------------------|----------------|-------------------------------|--------------|
| | | 230V~50Hz kW | 230V~60Hz kW | 230V~50Hz A | 230V~60Hz A | | |
| FLY KXL 1000 A | 5300 | 1,40 | 1,84 | 6,00 | 8,26 | 65 | 82 |
| FLY KXL 1500 A | 7950 | 2,10 | 2,76 | 9,00 | 12,39 | 66 | 123 |
| FLY KXL 2000 A | 10600 | 2,80 | 3,68 | 12,00 | 16,52 | 67 | 165 |
| FLY KXL 2500 A | 13250 | 3,50 | 4,60 | 15,00 | 20,65 | 68 | 202 |
| FLY KXL 3000 A | 15900 | 4,20 | 5,52 | 18,00 | 24,78 | 69 | 243 |



Selection program



Dimensions



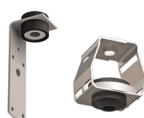
According to standard NSF-37-2012, the maximum installation height in **service doors** is the speed profile point at 8,14m/s plus 0,9m. So **FLY KXL can be used until 3,1m + 0,9m = 4,0m.**

Optional accessories

Supports and installation



Wall rail support
SPWR



Silentblock supports
SPANG-SIL / SLB



Suspension cables
SPCT

Control



Hand-Auto
CH-5AW-NE
✓ Included

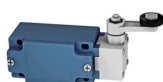


Clever Control Kit

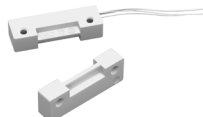


RJ45 Cable
✓ Included

Sensors



Mechanical door contact
DC



Magnetical door contact
✓ Included



External Temperature
Sensor (Clever Control)

CAD drawings, BIM files, installation manuals and other documentation

