

Wellisair

Air Disinfection Purifier

WADU-02

User Manual

* Before using, it is highly recommended that you read this user manual.

* Product out-look and specification might be changed without notice for the product improvement.

* Design and color would be different from a cover design.

Wellis



Air Disinfection Purifier

WADU – 02

Product name	Wellisair Air Disinfection Purifier
Model	WADU-02
Power consumption	3.6W
Noise	Less than 30 DB
Coverage	Min 30 m ²
Operating Place	Indoor only
Weight	1.7Kg (including cartridge)
Size	(W)220mm x (D)150mm x (H)370mm

Introduction

Thank you for purchasing Wellisair Air Disinfection Purifier (WADU-02) !

This product has been developed based on the theory of hydroxyl radicals known as a “natural purifier” in the atmosphere. Our hydroxyl radicals technology provides a unique solution of disinfecting not only the air but also space surfaces by continuously removing, in actual coverage of indoor living, harmful bacteria, viruses, fungi, odor and so forth.

Wellisair disinfection purifier provides sustaining high level of indoor air quality with safety.

Before using, it is highly recommended that you read this user manual for instruction, safety, and detailed information.

Table of Contents

1. Product features.....	4
1-1. Disinfection and it's technology	5
1-2. Test result.....	5
2. Safeguards.....	6
3. Identification of Parts	9
4. Display and touch buttons.....	10
4-1. Touch button.....	10
4-2. Display	10
5. Operation (device).....	11
5-1. Operating mode.....	11
5-2. Night mode	11
6. Operation (cartridge)	12
6-1. Cartridge preparation	12
6-2. Cartridge replacement.....	12
6-3. Cartridge replacement interval.....	13
6-4. Precaution of cartridge usage	13
7. Things to check before After Sales service call.....	14

1. Product features

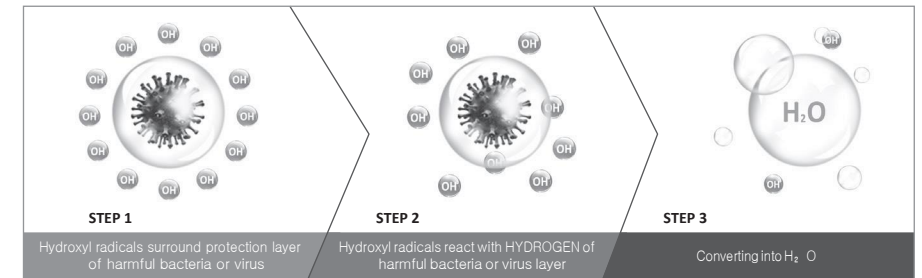
- 1 Powerful disinfection and de-odorization**
Hydroxyl radicals generated by chemical reaction which is harmless provides a unique solution of disinfecting actively the air and space surfaces as well by removing, in actual coverage of indoor living, harmful bacteria, viruses, fungi, odor, VOCs and so forth.
- 2 Constant level of high air quality**
Indoor pollutants are generated from indoor life itself and are constantly supplied from outside. So, we need to remove it continuously. Wellisair air purifier has been developed to meet this requirement to operate 24hrs a day. We recommend 24hrs-a-day working of the device for much higher air quality in your space.
- 3 Proven technology**
Technology proven by hospitals in European countries like England as a solution for 2nd infection protection.
- 4 Easy/cheap to use and maintain**
By replacing cartridge every three months, it provides constant high level of air purification. Power consumption is also low so that monthly charge does not exceed \$1. No need to buy and change filters or UV ramps.
* Cartridge replacement interval might be different depending on user's operating environment such as temperature and humidity.
- 5 Error detection system**
In case of no cartridge in the device or with the cartridge inserted improperly, red alarm sign with sound works.
- 6 Contamination level sensing**
Indoor air quality is displayed with air contamination sensor.
- 7 Alarm signal for the cartridge replacement**
Right before the cartridge is used up, replacement display works and you can properly replace the cartridge. Once you miss right timing of replacement, the device will stop automatically with red alarm light.
- 8 Additional function**
 - Both for wall-mounted and stand type purpose
 - Modern and slim with convenience in usage. Once required, you can easily hang the device up on the wall.
 - Wide coverage
 - Recommendable treated area is up to 30m² depending on pollutant extent.

1. Product features

1.1 Disinfection and it's technology

- Hydroxyl radicals?
Hydroxyl radicals is generated from sun light and ozone with water in the air. And it is harmless and natural purifying substance which is generated in nature and extinguished with other contaminants.

- How do hydroxyl radicals disinfect?



1.2 Test result

Tested by KCL (Korea Conformity Laboratories) / 2016. March 24th issued

TETS ITEMS	TEST RESULT			Testing Environment
	Early Concentration (CFU/mL)	After 4hrs Concentration (CFU/mL)	Reduction rate of bacteria(%)	
Antibacterial test for Escherichia coil	1.7X10 ⁴	<10	99.9	(37.0±0.1)°C (33.1±0.2)% R.H.
Antibacterial test for Pseudomonas aeruginosa	1.9X10 ⁴	<10	99.9	
Antibacterial test for Staphylococcus aureus	1.4X10 ⁴	<10	99.9	
Antibacterial test for Salmonella Typhimurium	1.6X10 ⁴	<10	99.9	(37.0±0.1)°C (33.1±0.2)% R.H.
Antibacterial test for K pneumoniae	2.0X10 ⁴	<10	99.9	
Antibacterial test for MRSA	1.2X10 ⁴	<10	99.9	

* Show 99.9% reduction rate after 4hours test on surface to measure air disinfection capability.

TETS ITEMS	TEST RESULT			Testing Environment
	Early Concentration (CFU/mL)	After 4hrs Concentration (CFU/mL)	Reduction rate of bacteria(%)	
Reduction test for Airborne microbes (Klebsiella pneumoniae)	1.2X10 ⁴	<10	99.9	(23.0±0.2)°C (50.2±1.0)% R.H.
Reduction test for Airborne microbes (MRSA)	1.0X10 ⁴	<10	99.9	(23.0±0.2)°C (50.2±1.0)% R.H.

* Show 99.9% reduction rate after 4hours test of airborne to measure air disinfection capability.

2. Safeguards

The rank of safeguards are being divided into “warning” and “cautions”



Warning

It might cause serious injury or even death if you do not follow below instructions.

Do not use any other power supply.

- It might cause device troubles, fire, or electric shock.

Do not overload power outlets, extension cord, convenience receptacles.

- It might result in fire.

Do fully insert and fit electric plug into electric sockets.

- It could be a cause of fire unless it completely fits.

Pull the plug rather than cord when you disconnect your device from the power outlet.

- It might cause device troubles, fire, or electric shock.



Stop using the device and call our A/S center when electric cord or plug is damaged.

- It might result in fire or electric shock.

Never pull or insert the plug with wet hand.

- It might cause electric shock.

Do not walk on or pass over the power cord.

- It might result in injury or electric shock.

Before you plug into power outlets, check first dust or water on socket-contact.

- It might cause fire or electric shock.



2. Safeguards

※ The rank of safeguards are being divided into “warning” and “cautions”

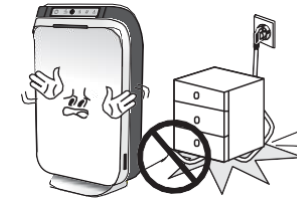


Warning

It might cause serious injury or even death if you do not follow below instructions.

Do not bend or put heavy stuffs on the power cord.

- It might cause electric shock or fire.



Keep the device distant from fire, heaters, or explosive chemicals such as fumes, spray, butane gas, candle.

- It might cause fire or explosion.



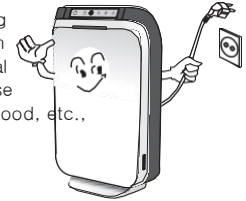
Do not operate the device in highly wet conditions. Snow or rain cause troubles.

- It might result in troubles, fire, or electric shock.



Stop operating the device when you recognize abnormal noise and smell.

- Turn off and pull the plug from power outlet when you recognize abnormal noise and smell or in case of earth quake, fire, flood, etc.,



※ Before using, it is highly recommended that you read this Safeguards and use device properly for the safety.

2. Safeguards

The rank of safeguards are being divided into "warning" and "cautions"



Caution

It might cause damage in property, malfunction, or low performance.

This device is only for indoor use(5-40°) and do not operate outdoors

- It might cause device troubles, deformation or color change.



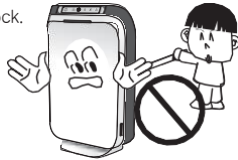
Do not place the device on any unstable / slope surfaces or too high position.

- It might result in a device breakdown or fire.



Never put any kind of objects (pin, stick, coin, or other materials which are not given) into the device.

- It might cause device troubles or electric shock.



Never attempt to cover the vents with laundry, curtain, clothes, etc.,

- It might result in fire and device troubles arising from internal heat of the device.



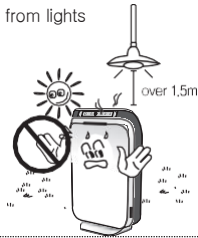
Do not move the device during operation

- It might cause device trouble.



Keep the device 1.5m distant from lights and avoid direct sunlight.

- It might result in device color change

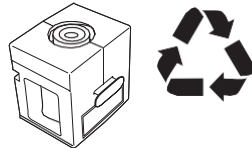


Small amount of solution can be left in used-up cartridges. Never let children and pet eat it.

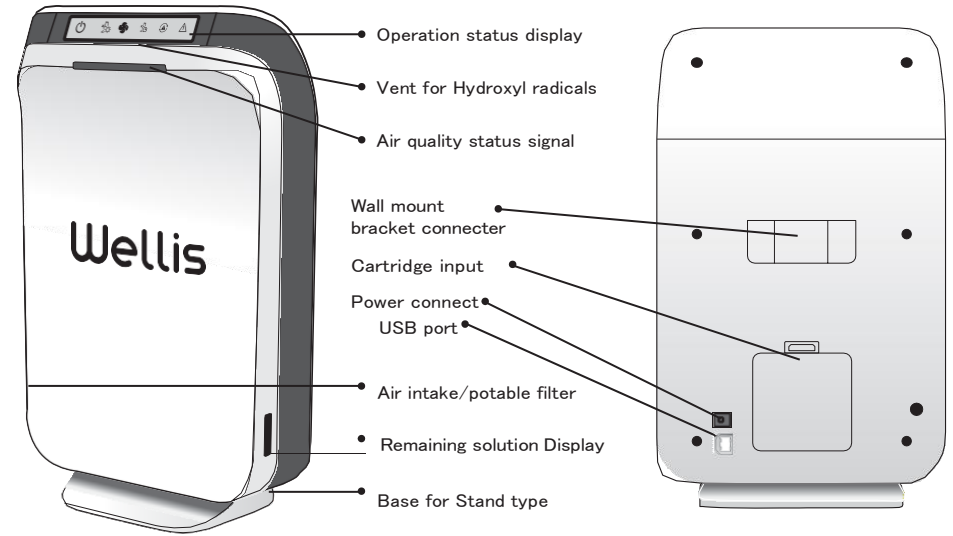
- It might cause stomachache, injury, or skin irritation.



Please dispose of used-up cartridges properly (e.g. recycling)



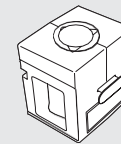
3. Identification of Parts



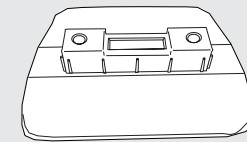
* USB port : Do not use, only for production.

WADU-02

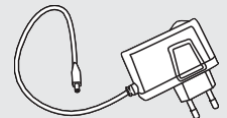
WADU-02



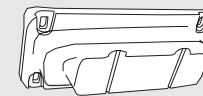
Cartridge



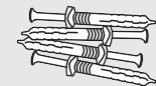
Base (for stand type)



12V DC Adapter



Bracket (for wall-mount type)



Nail (for wall mount type)

4. Display and touch buttons



4.1 Display and touch buttons



Operating button : Turn on and off the device.



Night mode button : Convert into night-mode operation.

4.2 Display



Operating mode : displays normal operation.



Night mode : displays more silent operation and for no light at night.
* In order to convert night mode into operating mode, press the night button.

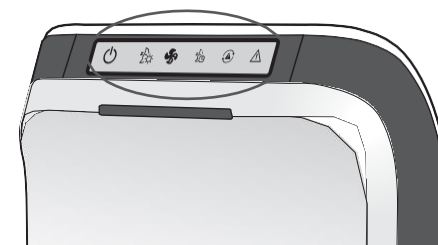


Cartridge replacement alarm : indicates time to replace cartridge.



Warning alarm : alarms improper cartridge insert or to stop the device caused by lack of solution.

5. Operation (Device)



5.1 Operating Mode

- ① Put the device on the table or wall using stand or wall mounted bracket with rigidity.
- ② Insert the adaptor jack into the DC power input(socket) on the rear of the device and put the adapter plug into power outlet
- ③ Press the operating button to start and work the device (Operating Status). Lights of the operating mode on the status light will light and the device starts working with short buzzer sound.
- ④ Air quality status signal light will light in order of red, orange, blue for around 5minutes and orange light will light for 30minutes before normal sensing condition.
- ⑤ Without the cartridge or inserting the cartridge improperly as instructed, warning alarm light will light and the device stop operating.
- ⑥ If "warning alarm" blinks contact service center or local distributor.

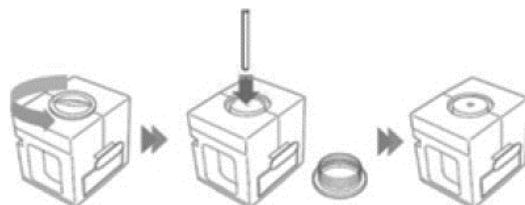
5.2 Night Mode

- ① Press the right mode button to convert the device into mode. In night mod, fan speed gets lower which leads to much less sound at with the device operating and no light.
- ② In order to convert night mode into operating mode,, press the night mode button.

6. Operation (Cartridge)

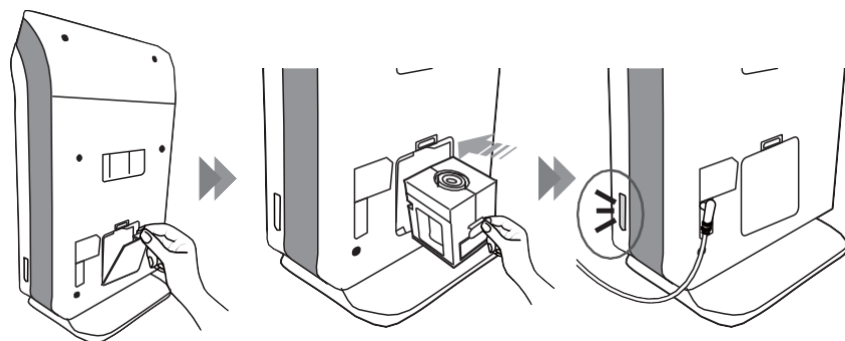
6.1 Cartridge preparation

- ① Remove the cap by turning and introduce the capillary stick into the cartridge hole.



6.2 Cartridge replacement

- ① Open the cartridge cover in rear face of device and push the cartridge into the device tightly.
 - ② Close cartridge cover.
- * Insert cartridge and close cartridge cover properly if not the case "warning alarm" will light on.
- ③ Once the replacing or inserting the cartridge properly then, the device will be operated with buzzer sound.
 - ④ Green light for display of remained orange oil of cartridge will light.



6.3 Cartridge replacement interval

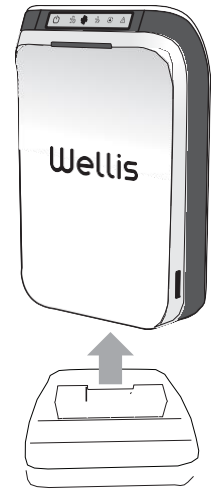
- ① After 3 months, the cartridge is due for change depending on usage environment. Remaining solution amount can be checked every time through the remaining solution display light in the side of the device.
* Cartridge replacement interval might be different depending on user's operating environment such as temperature and humidity.
- ② Replace used-up cartridge with new one at once when the cartridge replacement light comes.
- ③ In case you do not replace properly (even after 5~7 days from the signing) "cartridge alarm" and "warning alarm" will light and the device will stop operating.

6.4 Precaution of cartridge usage

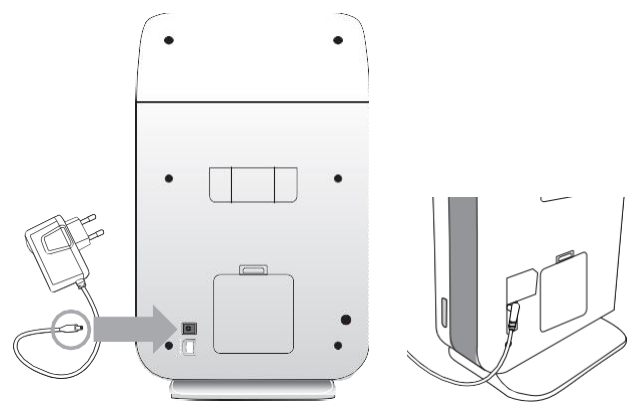
- ① Moving Device location : When you need to move device, take cartridge out and close the cap not to leak the solution.
- ② Do not place the device on any unstable/slope surfaces, It might result in a device breakdown due to possible solution leakage.
※ The cartridge solution may cause product damage.
- ③ The cartridge replacement time is about 3 months.
- ④ Some amount of orange oil may be remained inside bottle after 3 months.
- ⑤ Do not eat because it may cause stomachache or respiratory illness. be especially careful not to eat children or pets.
- ⑥ Contact with skin may cause rash.
- ⑦ If you do not use it immediately, please keep it inside refrigerator in an upright position.
- ⑧ The cartridge storage period is less than 1 year from the date of purchase.

7. For standing with cradle

① Carefully fit the Device onto the base of the cradle as indicated.
To maximize the purified area, place Wellisair at 1,5m height and 60cm minimum from any wall. It would be also good to place it into an area with ventilation.



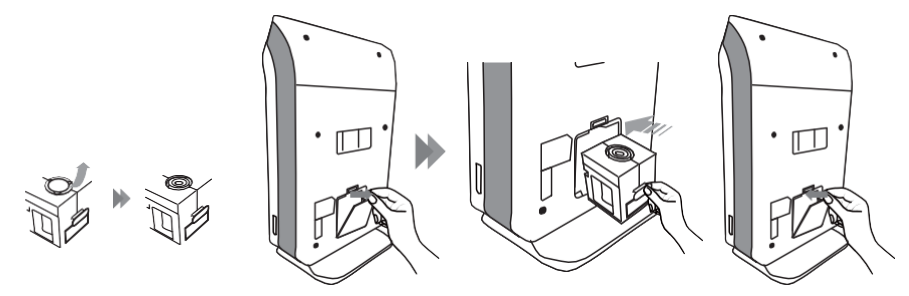
② Plug in the power supply to the Device as indicated



WADU-02

WADU-02

③ Open the door of cartridge and insert the cartridge into the Device, pushing firmly until located and close the door as indicated.

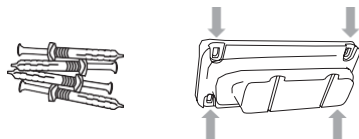


④ Touch the power button to turn the Device on

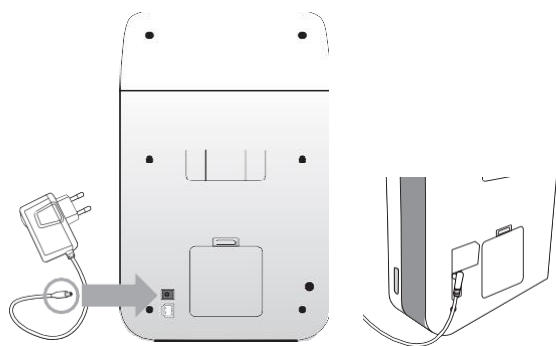


8. Wall Mount

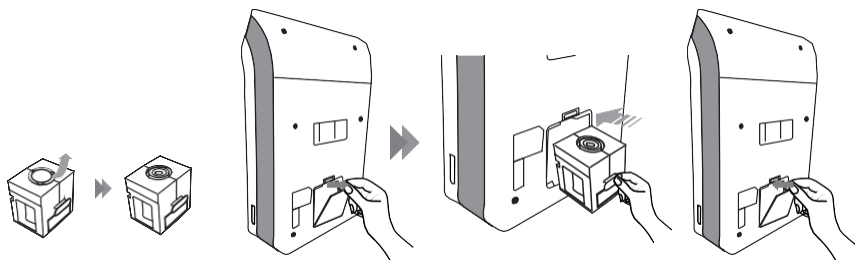
① Fix firmly the wall bracket on the wall using the fixing screws as indicated



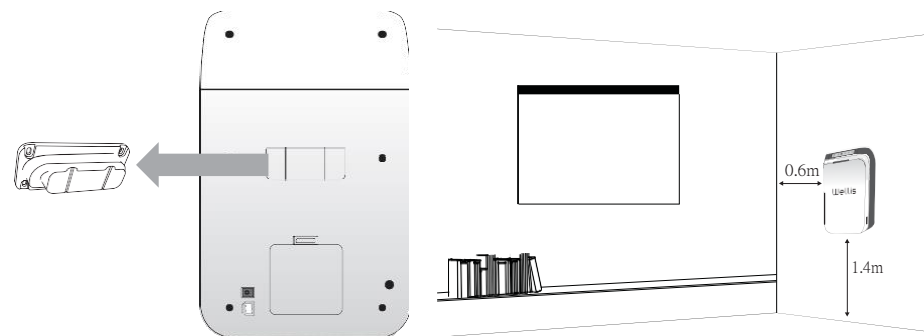
② Plug in the power supply to the Device as indicated



③ Open the door of cartridge and insert the cartridge in the Device, pushing firmly until located and close the door as indicated.



④ Hang the Device up with the wall bracket, making sure the Device locates fully with the wall bracket as indicated.



※ It is recommended that the Device (bottom of device) is positioned such that it operates 140cm away from the floor and a minimum 60 cm away from the wall.

⑤ Touch the power button to turn the Device on.



9. Checkpoints before After Sales service call.

Symptom	Check point	Yes	No
Display turned off or No operation of the device	Power connected roperly?	Call After Sales service center.	Connect properly (AC 220V/60hz power)
	Defective power outlet?		
Remarkable performance difference	Passed replacement time?	Replace the cartridge	Call After Sales service center
Device vibrating seriously (abnormal sound)	Placed it on unstable or slope surface?	Call After Sales service center	Move the device onto stable and flat surface
Cartridge alarm mode light blinking	Improper inserting of the cartridge into the device?	Insert and push fully the cartridge into the inside of device and close the cover	Call After Sales service center
	Passed replacement time?	Replace the cartridge	Call After Sales service center

※ When return the device, please separately pack "device" and "cartridge"

WADU-02

WADU-02

Warranty Card

Wellisair

Airtecnicos Export S.L.
Carrer Conca de Barberà, 5, Pol. Ind. Pla de la Bruguera, Castellar del Vallès (Barcelona),
08211, Spain