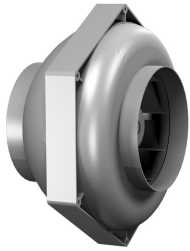




Characteristics



- External rotor motor protected against thermal contact
- 0-100% variable speed
- Low noise level
- Backward curved impellers in accordance to DIN 1940, class G 2,5
- Non inflammable plastic casing of high resistance to impacts
- Octagonal design for easy installation
- EX reference = ATEX

Specifications

Model	(V (50 Hz))	(A)	(W)	(rpm)	(m³/h)	(Pa)
RS 100 L	ERP 2016					
RS 125 L*	No ERP					
RS 125 L.3BF	ERP 2016					
RS 150	ERP 2016					
RS 160	ERP 2016					
RS 160 L	ERP 2016					
RS 200	ERP 2016					
RS 200 L*	No ERP					
RS 250	ERP 2016					
RS 250 L*	No ERP					
RS 315*	No ERP					
RS 315 L*	No ERP					
RS 315 M.3EF	ERP 2018					
RS 315.3EF	ERP 2018					

\* Only available outside the EU, inside the EU valid as a spare part