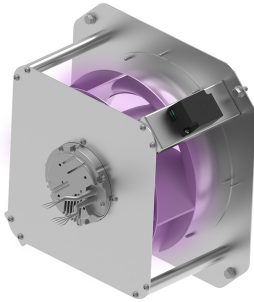




Characteristics

Technology applicable to any product in the RMAC-RMEC catalogue, with a disinfectant action thanks to the application of Kleenfan technology, which acts in the same way as nature, carrying out an oxidation process such as photosynthesis. The UV-A rays emitted by an LED lamp hidden in the system act on the titanium dioxide in the turbine and eliminate the pathogens from the air that come into contact with it. Effective in returning the air free of volatile organic compounds, bacteria, viruses and bad odours to the room.



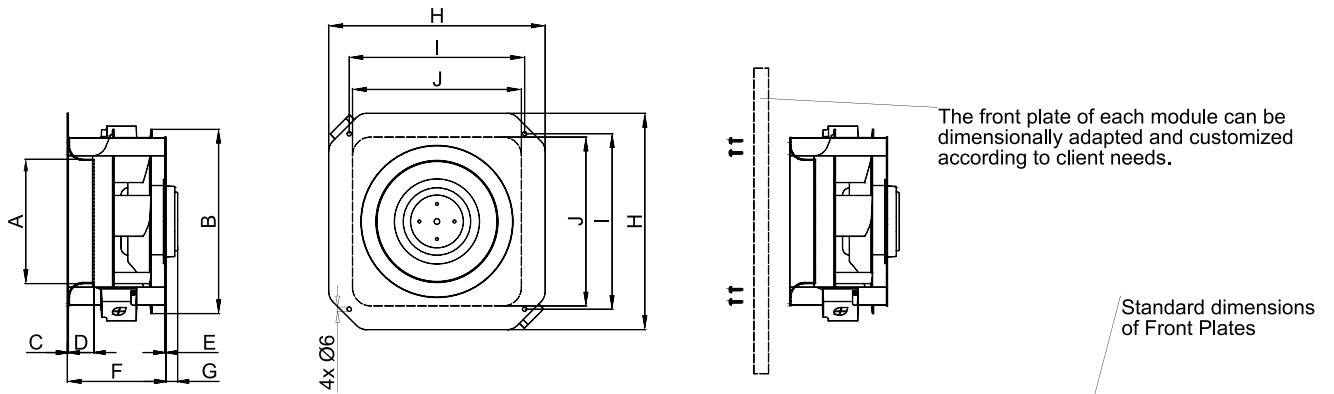
- Kleenfan technology with photocatalytic disinfectant action fans. Available for all catalogue models.
- Photocatalysis starts from the natural principle of decontamination of nature itself. It is a natural phenomenon that, mimicking photosynthesis, accelerates a photoreaction through the action of light on a catalyst.
- UV-A rays, from the long-life LED, act on the titanium dioxide in the turbine generating Reactive Oxygen Species (ROS) that cause advanced oxidation processes (AOP), deactivating a wide range of pathogenic microorganisms (viruses and bacteria).
- This catalytic reaction produces oxidation reactions in organic compounds and reduction in inorganic ones, in addition to significantly reducing suspended particles.
- Mineralizes most of the pollutants present in urban areas produced by vehicles and industry (NOx, SOx, COx, formaldehydes, VOCs, etc.).
- Double-inlet EC centrifugal fan driven by an external rotor motor of low consume protected through thermal contact 0-100% variable speed.
- Optional: electronic speed regulator PM6 0-10V.

Specifications

Model	Tension (V (50 Hz))	Current fans (A)	Power (W)	Speed (rpm)	Air Flow (m ³ /h)	Maximum Pressure (Pa)
RMAC 19240 FC	1x230V	0.3	70	2600	550	330
RMAC 22550 FC	1x230V	0.58	138	2735	1010	470
RMAC 25050 FC	1x230V	0.96	228	2780	1390	610
RMAC 315101 FC	1x230V	0.55	125	1349	1720	246
RMEC 19240 FC	1x230V	1.45	183	5014	867	1054
RMEC 22043 FC	1x230V	1.43	184	3803	1238	936
RMEC 22563 FC	1x230V	1.43	187	3702	1522	915
RMEC 25050 G9 FC	1x230V	1.37	185	3493	1677	809
RMEC 25050 V8 FC	1x230V	1.35	312	3410	1850	780
RMEC 28080 FC	1x230V	1.33	311	2310	2220	520
RMEC 33788 FC	-	1.34	314	2230	3080	680



Dimensions



Dimensions (mm)										
Model	A	B	C	D	E	F	G	H	I	J
RMAC 19240	Ø128	Ø192	1,5	25	1,5	96	-	□223,4	□187,4	□190
RMEC 19240 G9			1,5	25	1,5	96	16			
RMEC 22043 G9	Ø155	Ø220	1,5	35	1,5	107	16	□296	□240	□231
RMAC 22550		Ø227	1,5	35	1,5	135	-			
RMEC 22563		Ø225	1,5	35	1,5	135	16			
RMAC 25050	Ø170	Ø250	1,5	35	1,5	138	-	□320	□268,7	□260
RMEC 25050 G9			1,5	35	1,5	135	16			
RMEC 25050 V8			1,5	35	1,5	135	39			
RMEC 28080 V8	Ø192	Ø280	1,5	35	2	165	39	□320	□268,7	□260
RMAC 315101	Ø195	Ø315	1,5	55	2	209	-	□380	□330	□321
RMEC 33788 V8	Ø205	Ø337	1,5	48	2	201	39	□400	□350	□327