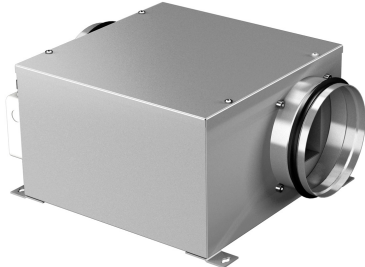




Characteristics

Low-profile ventilation box, for installation in false ceilings. Reduced noise thanks to the acoustic insulation of the walls. ErP-compliant thanks to the energy-saving EC fan. Designed for standard ductwork with circular connections. Easy maintenance due to the large service door. Low-profile ventilation box, for installation in false ceilings. Reduced noise thanks to the acoustic insulation of the walls. ErP-compliant thanks to the energy-saving EC fan. Designed for standard ductwork with circular connections. Easy maintenance due to the large service door.



- Low profiled ventilation unit
- External rotor motor protected through thermal contact
- 0-100% variable speed
- Connection box IP44 incorporated
- Wide service door Circular connexions to standard ducts
- "U" Models with single inlet forward curved impeller
- "EC" Models with low consume EC motor

Specifications

Model	(V (50 Hz))	(A)	(W)	(rpm)	(m³/h)	(Pa)
Z 100 U	310					
Z 125 U	330					
Z 150 U	525					
Z 150 U EC	800					
Z 200 U	260					