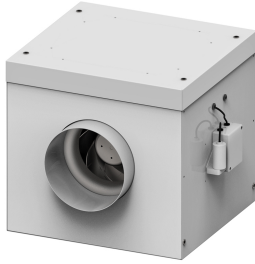




Characteristics

Ventilation box with low noise emission thanks to 5 cm sound insulation. Its circular connections make it easy to adapt to standard duct installations, making it ideal for renovating ventilation systems.

The generously sized flap facilitates maintenance and gives the technician plenty of room to manoeuvre. This product is available in three models, depending on the turbine: you can find it with jet, double suction action or with a fan with an energy-saving motor. In addition, the fan speed is fully adjustable.



- Ventilation unit with 50 mm thick of sound insulation
- External rotor motor protected through thermal contact 0-100% variable speed
- Connection box IP54 incorporated
- Wide service door
- Circular connexions to standard ducts
- "ZA" Models with backward curved impeller
- "ZB" Models with double inlet forward curved impeller
- "EC" Models with EC motor of low consume

Specifications

Model	(V (50 Hz))	(A)	(W)	(rpm)	(m ³ /h)	(Pa)
ZA 150 EC	ERP 2018					
ZA 200*	No ERP					
ZA 200 EC	ERP 2018					
ZA 250	ERP 2018					
ZA 250 EC	ERP 2018					
ZA 250 EC L	ERP 2018					
ZA 250 L	ERP 2018					
ZA 315	ERP 2018					
ZA 315 EC	ERP 2018					
ZA 315 EC L	ERP 2018					
ZB - 200 EC	-					
ZB 200 C1	-					
ZB 200 C2	-					
ZB 315 C1	-					
ZB 315 C2	-					

* Only available outside the EU, inside the EU valid as a spare part