

## Technical Features

---

High-efficiency air purification and filtration unit with three stages of filtration:

- G4 (ZLM) pre-filter according to EN779 standard
- F7 intermediate filter according to EN779 standard
- H14 absolute filter with 99.995% efficiency according to EN1822 and sealed with polyurethane for 100% air filtration.

Continuous recirculation of the indoor air through the three filtration stages guarantees air purification by capturing particles and pollutants such as: dust, pollen, spores, bacteria, viruses and fine particles PM10, PM2.5 and PM1.

Self-supporting galvanised steel frame, prepared for recessed installation in false ceilings. Easy-access register panel for filter replacement.

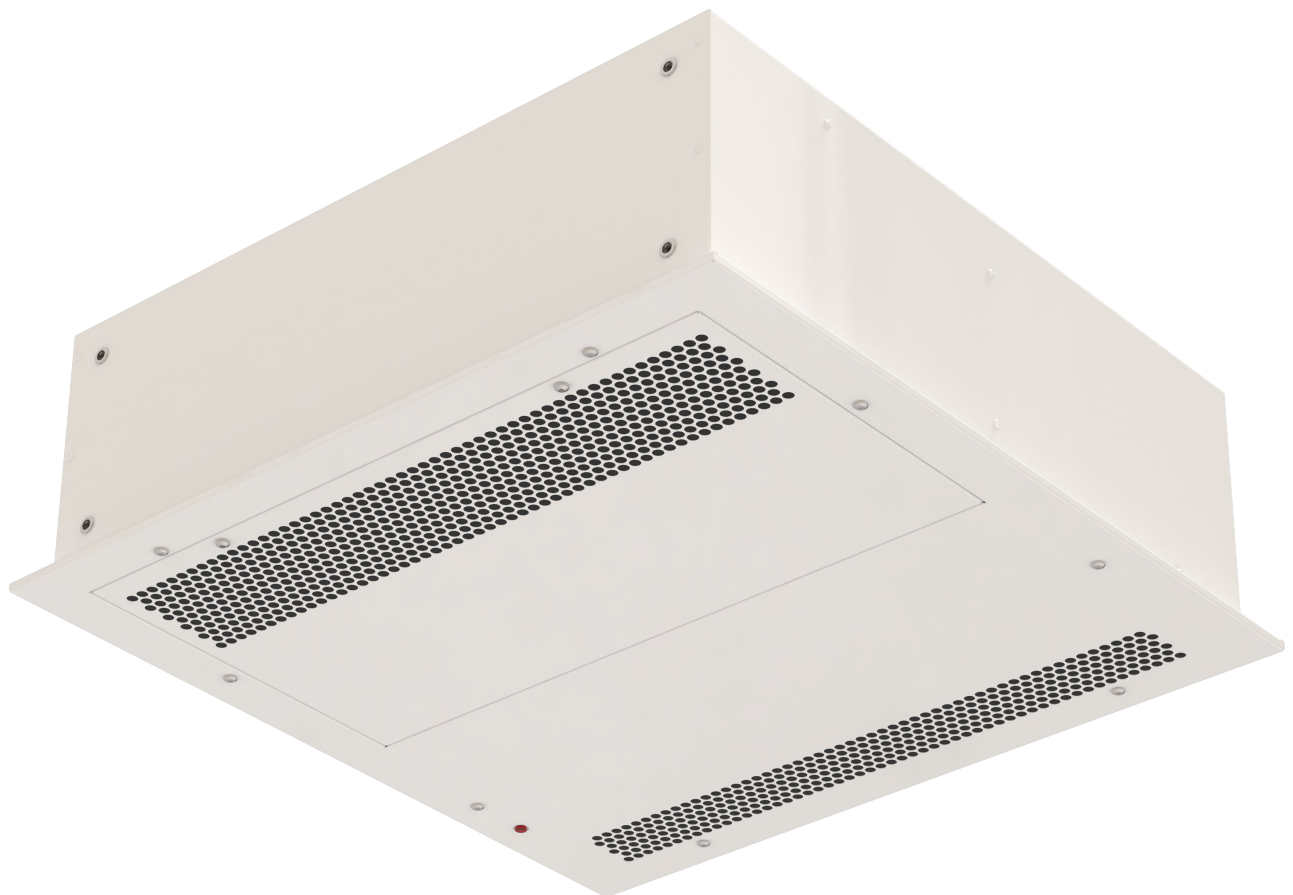
Suction and discharge grille (maintenance-free) integrated in a RAL9016-coloured frame. Other finishes available on request.

Centrifugal fan with external rotor EC motor with very low power consumption and noise level.

Constant flow rate up to 300 m<sup>3</sup>/h. The fan is self-regulating depending on the level of dirt in the filters to maintain the same flow rate at all times.

Visual indicator of dirty filter alarm by means of differential pressure switch.

Optional: ON/OFF control with constant flow regulation from 0 to 100%.





Airflow  
(m<sup>3</sup>/h)

300



Consumption  
(W/h)

61



Intensity  
(A at 230V-50Hz)

0,7



Weight  
(Kg)

32

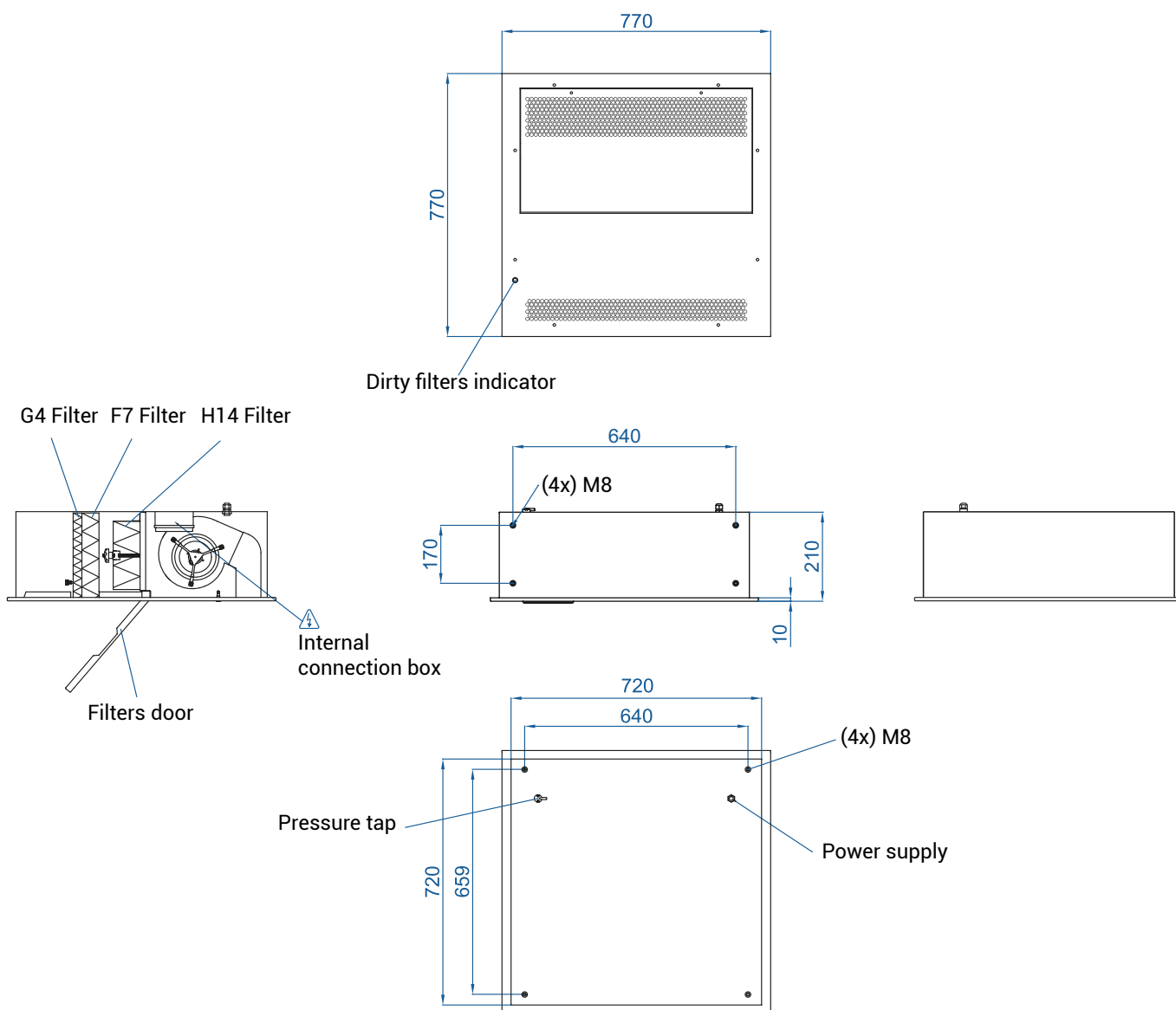


Noise level  
(dBA)

55

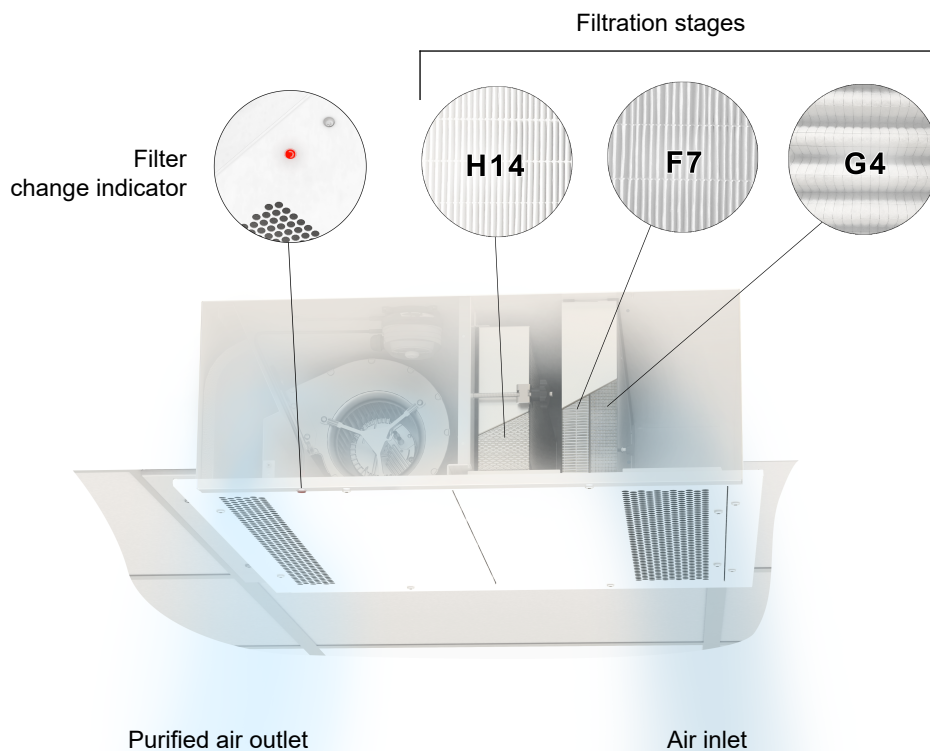
## Dimensions

The device has a compact design with overall dimensions of 770 x 770 x 210 (mm).



## Functioning

The unit has 3 filtration stages: 2 pre-filters (G4 and F7) and an absolute filter (H14). The LED on the service panel indicates the filter change to be carried out to maintain the efficiency of the equipment.



## Maintenance

