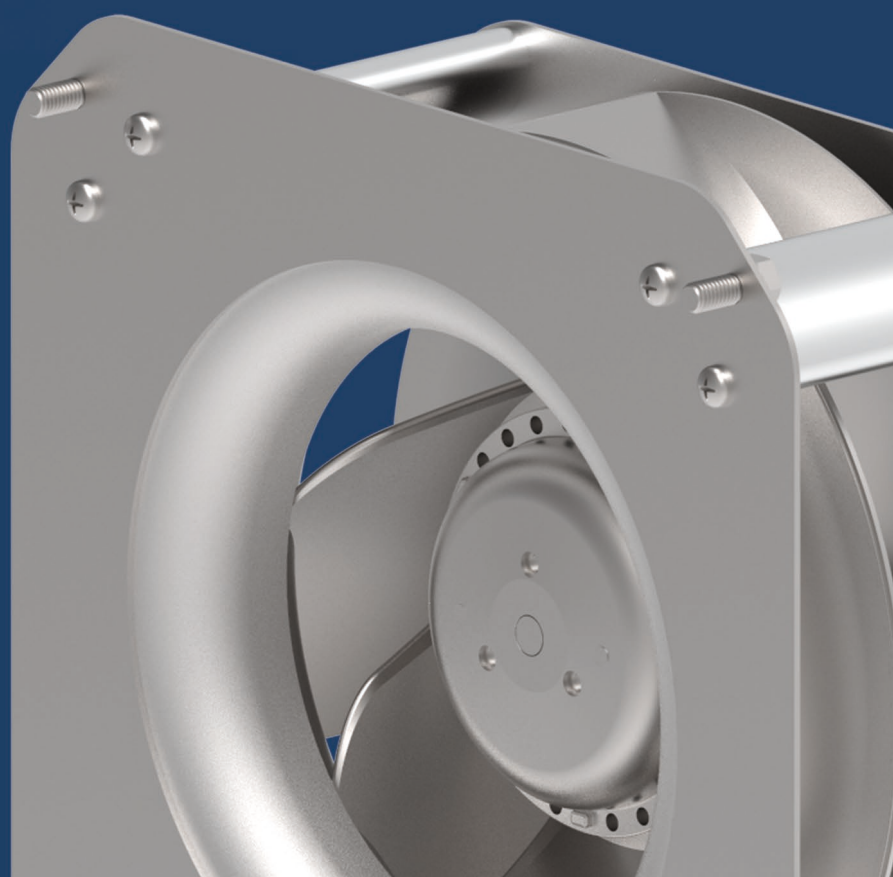
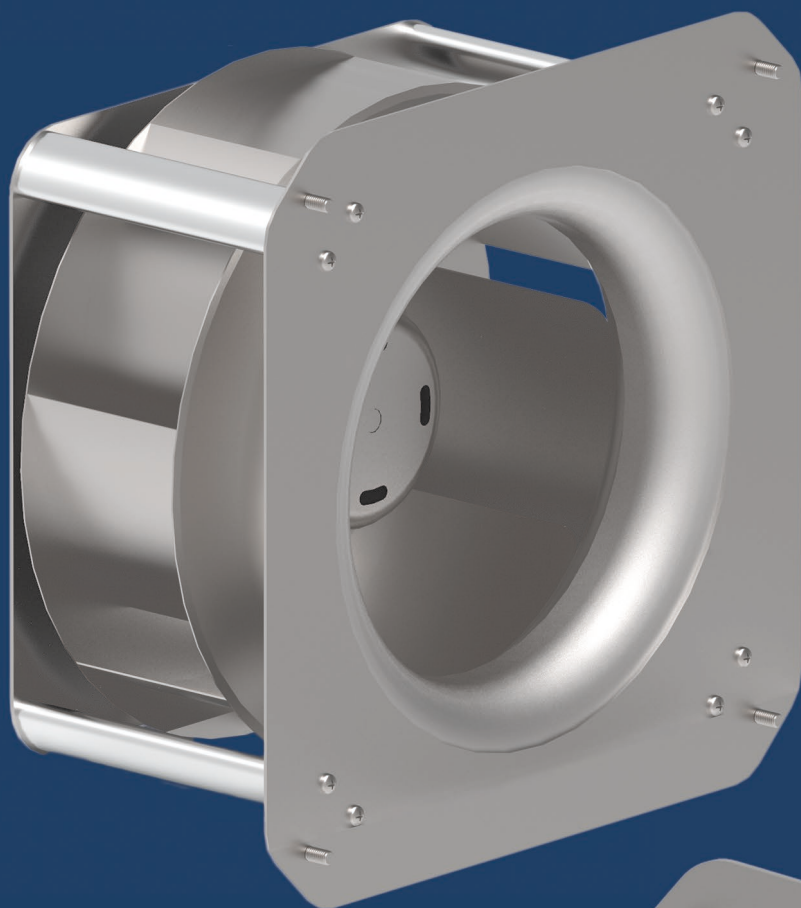


Plug-Fan compact modules
RMAC - RMEC

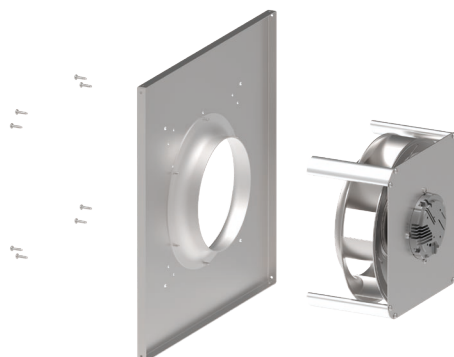




PRODUCTS

4

RMAC 192x40
RMAC 225x50
RMAC 250x50
RMAC 315x101
RMEC 192x40
RMEC 220x45
RMEC 225x63
RMEC 250x50
RMEC 280x80
RMEC 337x88



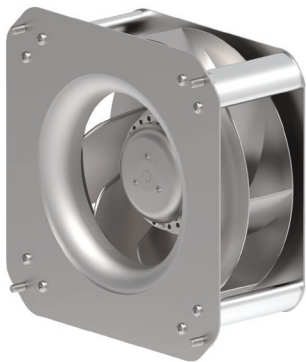
APPLICATIONS

15

CUSTOM-MADE FRONT PANEL
APPLICATIONS



Characteristics

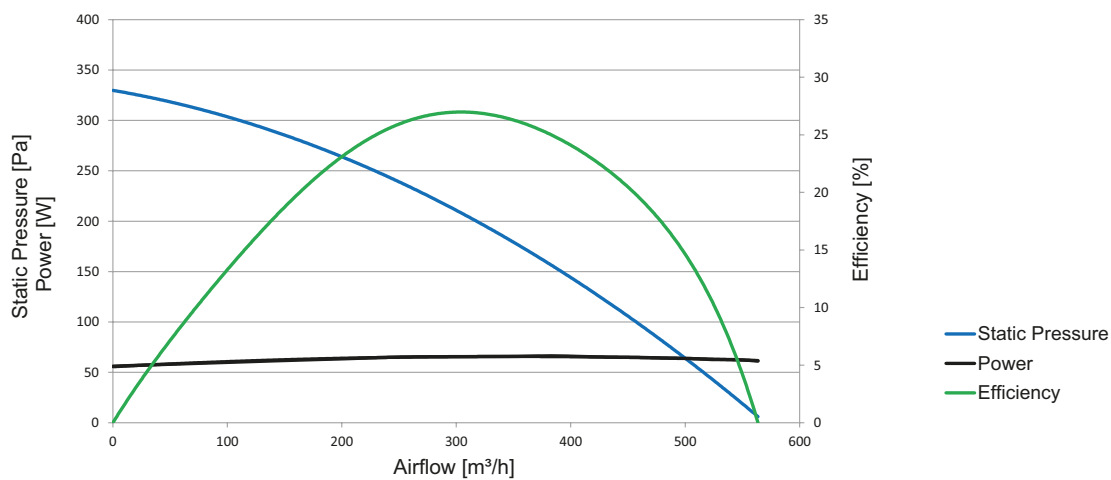


- High efficiency radial back blade fans with robust galvanized steel frame and aluminum profile supports.
- “Plug-fans” prepared to connect directly to ventilation equipment or various applications according to customer needs, facilitating the assembly on the equipment.
- Front fixing panel with integrated suction ring, custom OEM on request.
- Direct connections to the fan.
- Variable speed AC fan through transformer regulation.

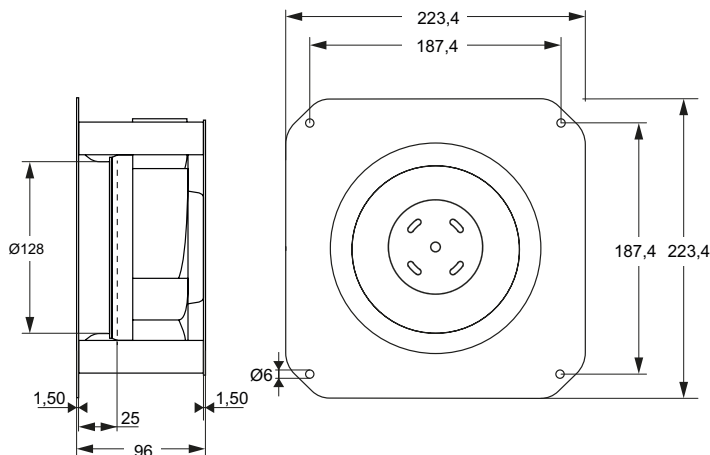
Specifications

| Model | Tension V | Maximum Airflow m³/h | Power kW | Intensity A | Speed rpm | Maximum Pressure Pa |
|-------------|--------------|----------------------------|-------------|----------------|--------------|---------------------------|
| RMAC 192x40 | 1x230V | 550 | 0,070 | 0,30 | 2600 | 330 |

Performance curve

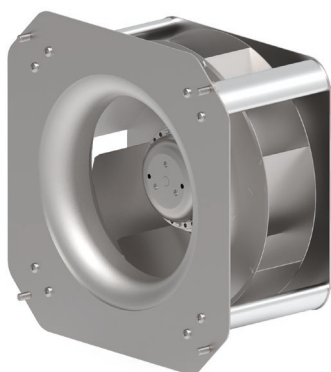


Dimensions





Characteristics

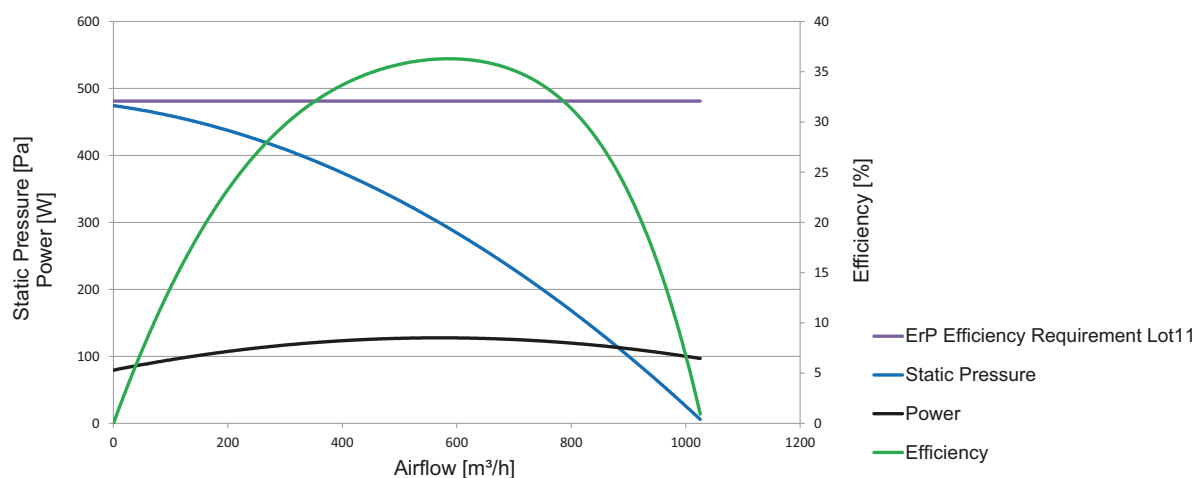


- High efficiency radial back blade fans with robust galvanized steel frame and aluminum profile supports.
- “Plug-fans” prepared to connect directly to ventilation equipment or various applications according to customer needs, facilitating the assembly on the equipment.
- Front fixing panel with integrated suction ring, custom OEM on request.
- Direct connections to the fan.
- Variable speed AC fan through transformer regulation.

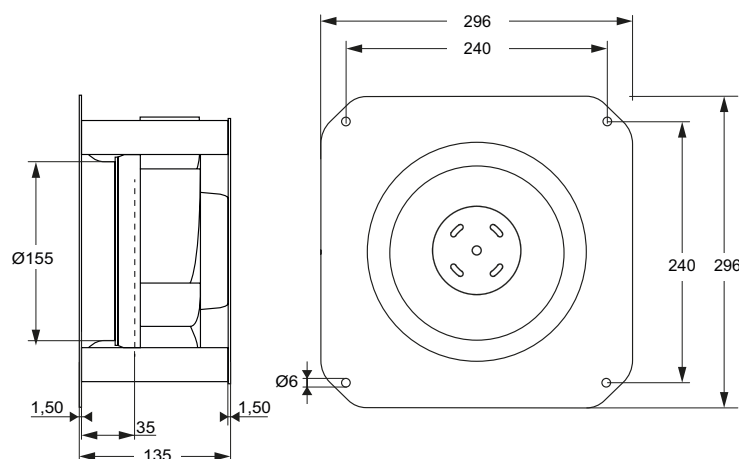
Specifications

| Model | Tension V | Maximum Airflow m³/h | Power kW | Intensity A | Speed rpm | Maximum Pressure Pa |
|-------------|--------------|----------------------------|-------------|----------------|--------------|---------------------------|
| RMAC 225x50 | 1x230V | 1010 | 0,138 | 0,58 | 2735 | 470 |

Performance curve

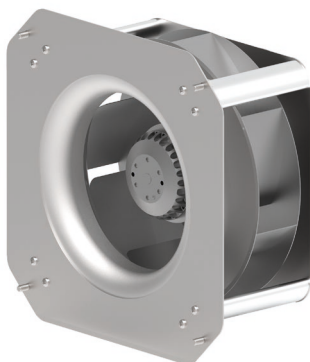


Dimensions





Characteristics

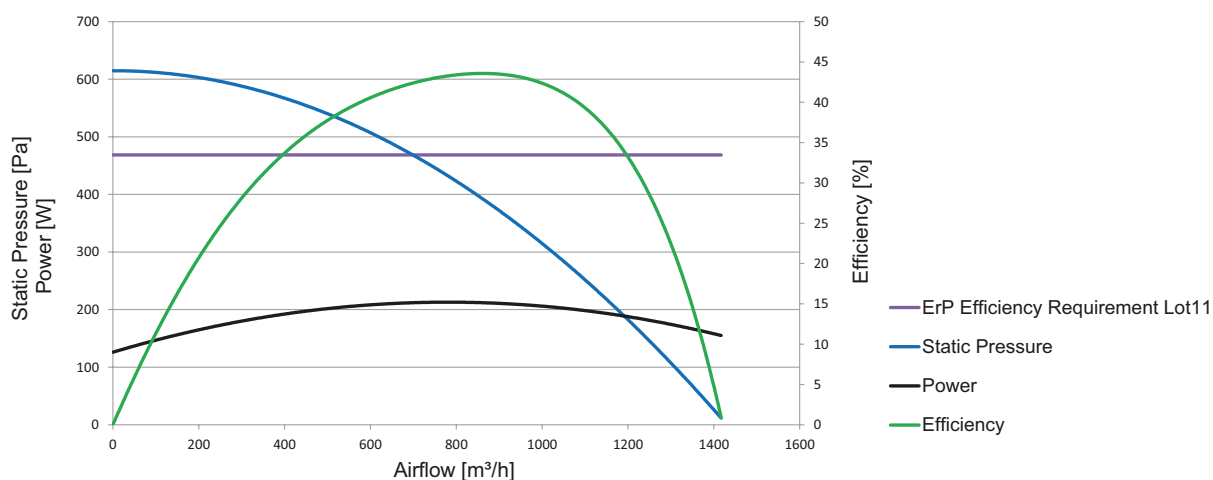


- High efficiency radial back blade fans with robust galvanized steel frame and aluminum profile supports.
- "Plug-fans" prepared to connect directly to ventilation equipment or various applications according to customer needs, facilitating the assembly on the equipment.
- Front fixing panel with integrated suction ring, custom OEM on request.
- Direct connections to the fan.
- Variable speed AC fan through transformer regulation.

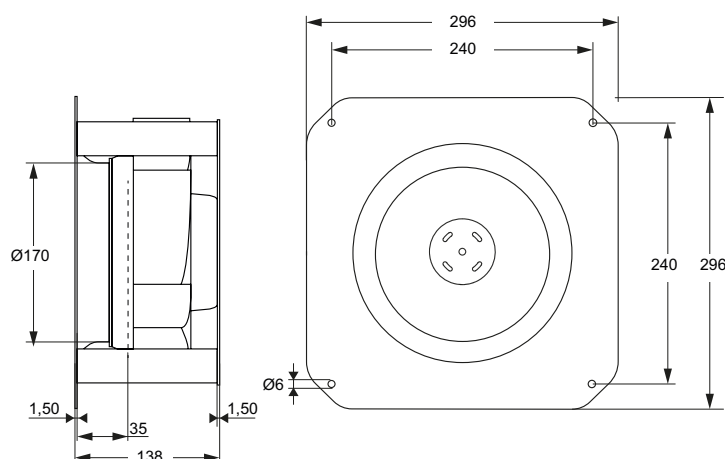
Specifications

| Model | Tension V | Maximum Airflow m³/h | Power kW | Intensity A | Speed rpm | Maximum Pressure Pa |
|-------------|--------------|----------------------------|-------------|----------------|--------------|---------------------------|
| RMAC 250x50 | 1x230V | 1390 | 0,228 | 0,96 | 2780 | 610 |

Performance curve

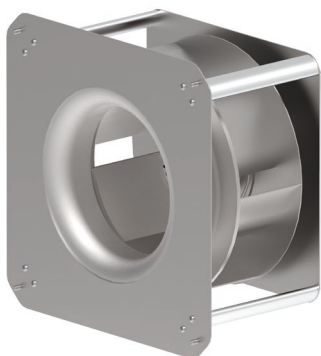


Dimensions





Characteristics

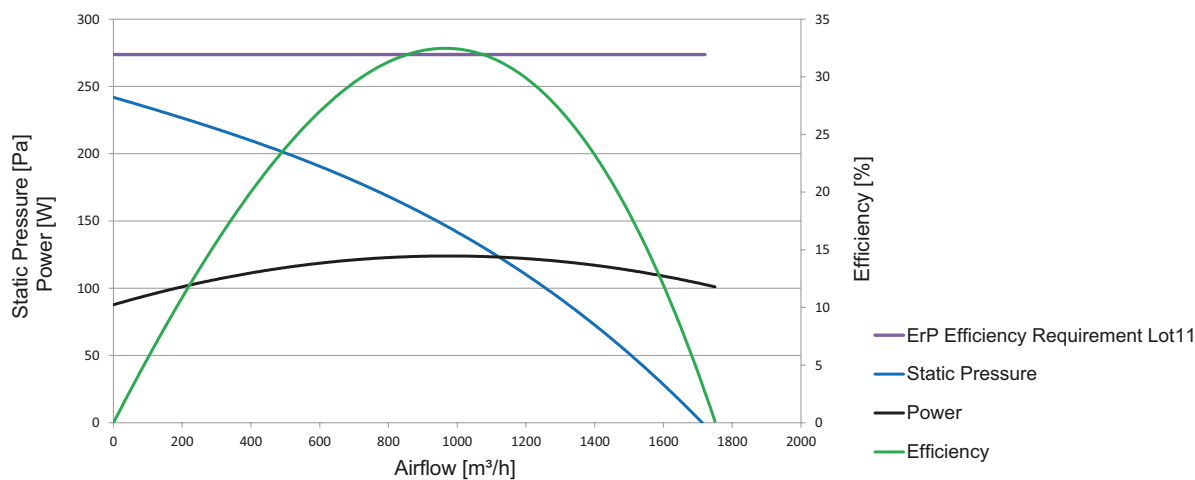


- High efficiency radial back blade fans with robust galvanized steel frame and aluminum profile supports.
- “Plug-fans” prepared to connect directly to ventilation equipment or various applications according to customer needs, facilitating the assembly on the equipment.
- Front fixing panel with integrated suction ring, custom OEM on request.
- Direct connections to the fan.
- Variable speed AC fan through transformer regulation.

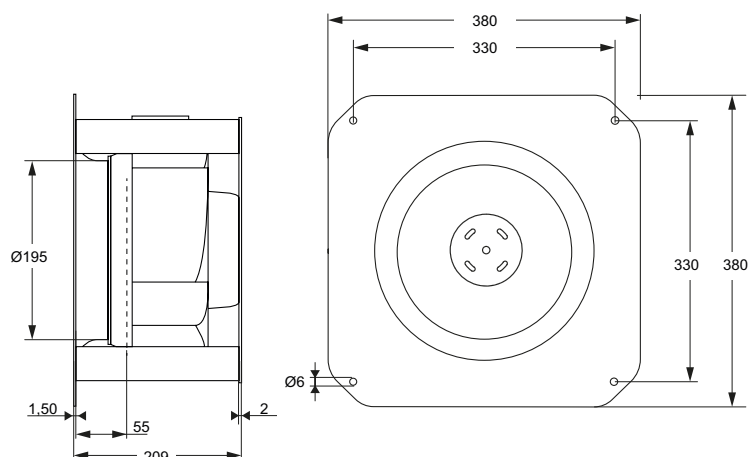
Specifications

| Model | Tension V | Maximum Airflow m³/h | Power kW | Intensity A | Speed rpm | Maximum Pressure Pa |
|--------------|--------------|----------------------------|-------------|----------------|--------------|---------------------------|
| RMAC 315x101 | 1x230V | 1720 | 0,125 | 0,55 | 1350 | 250 |

Performance curve

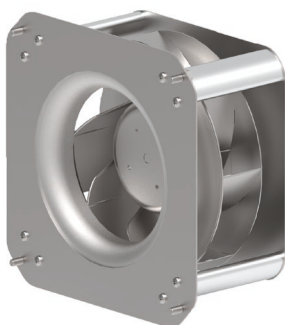


Dimensions





Characteristics

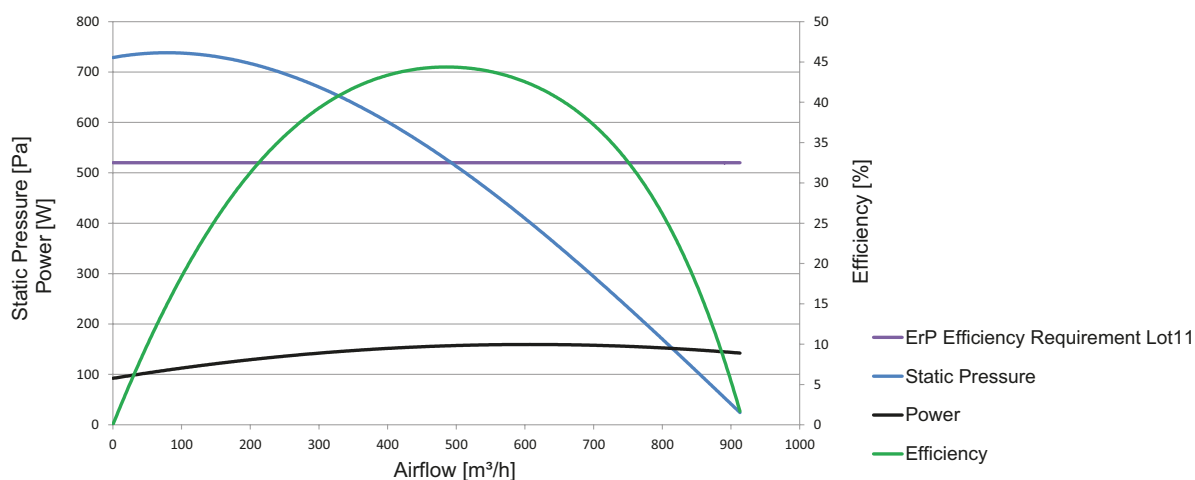


- High efficiency radial back blade fans with robust galvanized steel frame and aluminum profile supports.
- "Plug-fans" prepared to connect directly to ventilation equipment or various applications according to customer needs, facilitating the assembly on the equipment.
- Front fixing panel with integrated suction ring, custom OEM on request.
- Direct connections to the fan.
- 0-100% variable speed EC fan through electronic regulation via 0-10V signal.

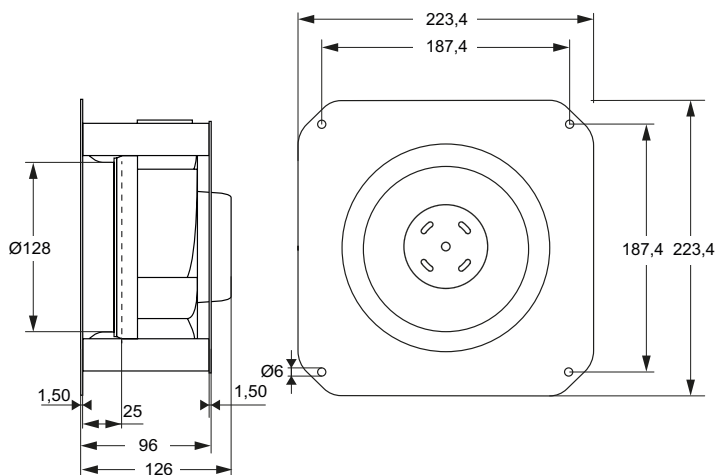
Specifications

| Model | Tension V | Maximum Airflow m³/h | Power kW | Intensity A | Speed rpm | Maximum Pressure Pa |
|----------------|--------------|----------------------------|-------------|----------------|--------------|---------------------------|
| RMEC 192x40 G9 | 1x230V | 910 | 0,157 | 1,10 | 3885 | 730 |

Performance curve

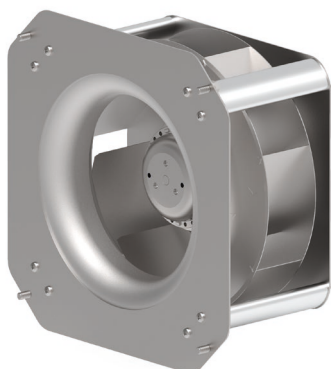


Dimensions





Characteristics

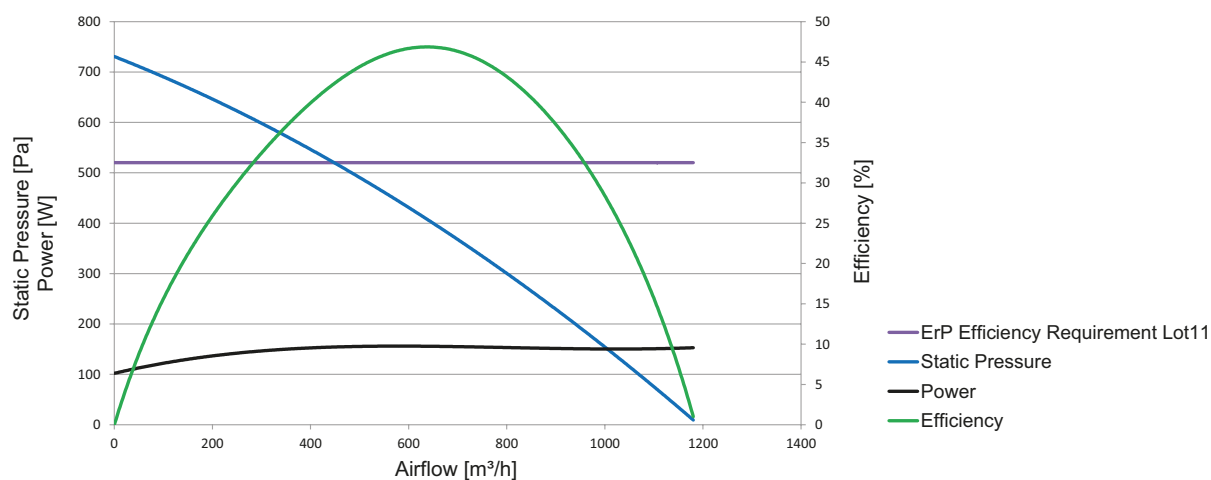


- High efficiency radial back blade fans with robust galvanized steel frame and aluminum profile supports.
- “Plug-fans” prepared to connect directly to ventilation equipment or various applications according to customer needs, facilitating the assembly on the equipment.
- Front fixing panel with integrated suction ring, custom OEM on request.
- Direct connections to the fan.
- 0-100% variable speed EC fan through electronic regulation via 0-10V signal.

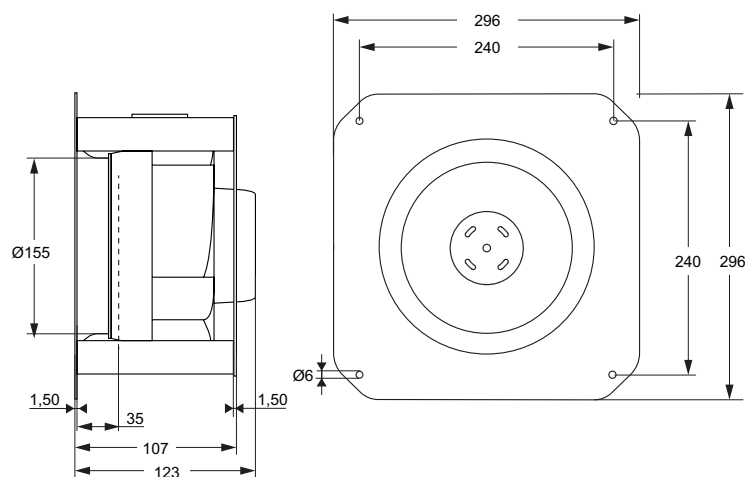
Specifications

| Model | Tension V | Maximum Airflow m³/h | Power kW | Intensity A | Speed rpm | Maximum Pressure Pa |
|----------------|--------------|----------------------------|-------------|----------------|--------------|---------------------------|
| RMEC 220x45 G9 | 1x230V | 1180 | 0,155 | 1,20 | 3480 | 720 |

Performance curve

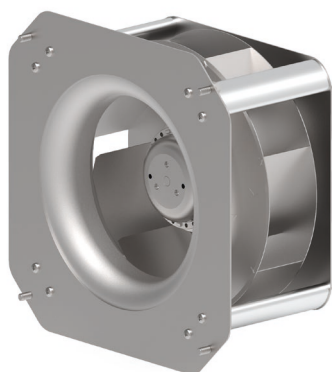


Dimensions





Characteristics

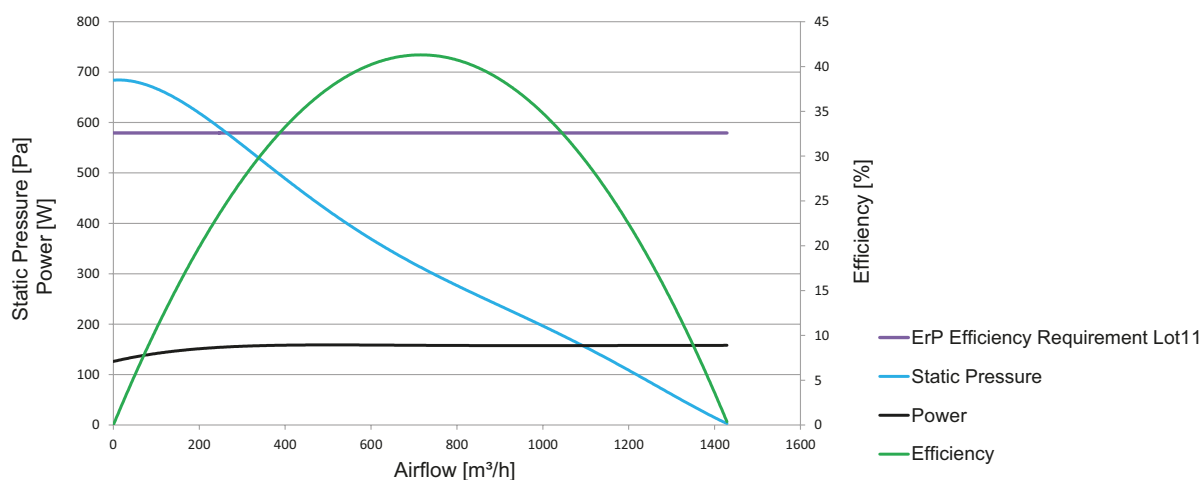


- High efficiency radial back blade fans with robust galvanized steel frame and aluminum profile supports.
- "Plug-fans" prepared to connect directly to ventilation equipment or various applications according to customer needs, facilitating the assembly on the equipment.
- Front fixing panel with integrated suction ring, custom OEM on request.
- Direct connections to the fan.
- 0-100% variable speed EC fan through electronic regulation via 0-10V signal.

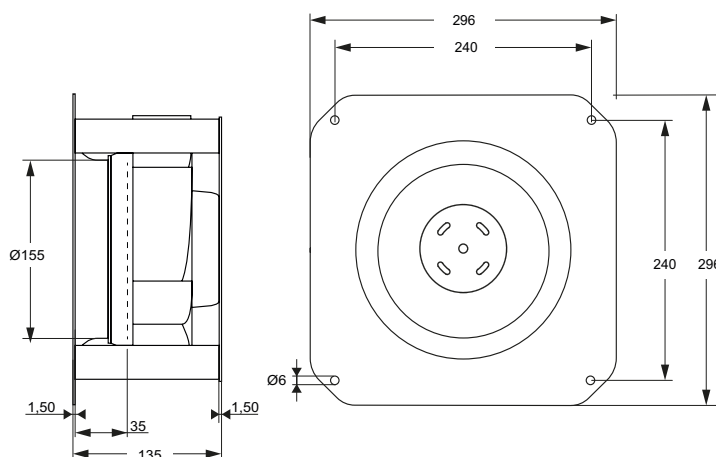
Specifications

| Model | Tension V | Maximum Airflow m³/h | Power kW | Intensity A | Speed rpm | Maximum Pressure Pa |
|----------------|--------------|----------------------------|-------------|----------------|--------------|---------------------------|
| RMEC 225x63 G9 | 1x230V | 1430 | 0,160 | 1,21 | 3200 | 690 |

Performance curve

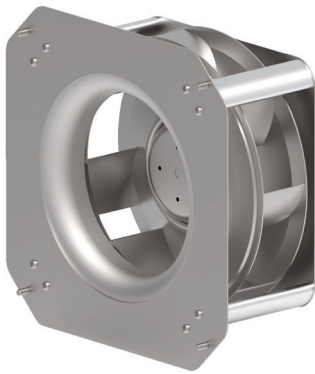


Dimensions





Characteristics

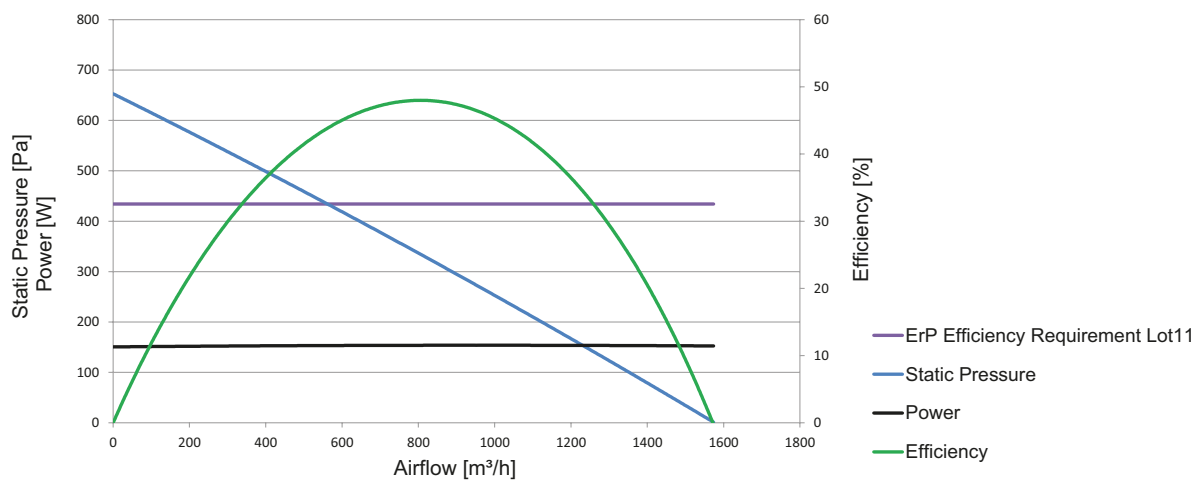


- High efficiency radial back blade fans with robust galvanized steel frame and aluminum profile supports.
- “Plug-fans” prepared to connect directly to ventilation equipment or various applications according to customer needs, facilitating the assembly on the equipment.
- Front fixing panel with integrated suction ring, custom OEM on request.
- Direct connections to the fan.
- 0-100% variable speed EC fan through electronic regulation via 0-10V signal.

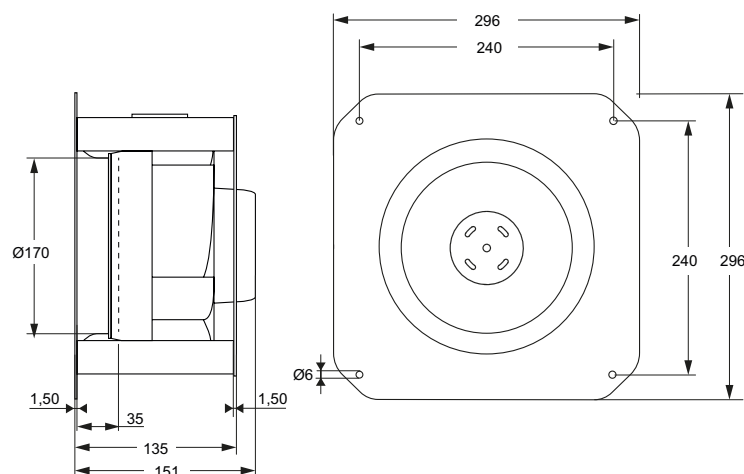
Specifications

| Model | Tension V | Maximum Airflow m³/h | Power kW | Intensity A | Speed rpm | Maximum Pressure Pa |
|----------------|--------------|----------------------------|-------------|----------------|--------------|---------------------------|
| RMEC 250x50 G9 | 1x230V | 1570 | 0,156 | 1,24 | 3185 | 690 |

Performance curve

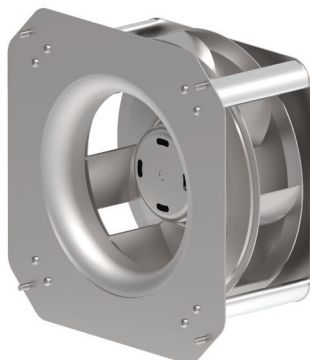


Dimensions





Characteristics

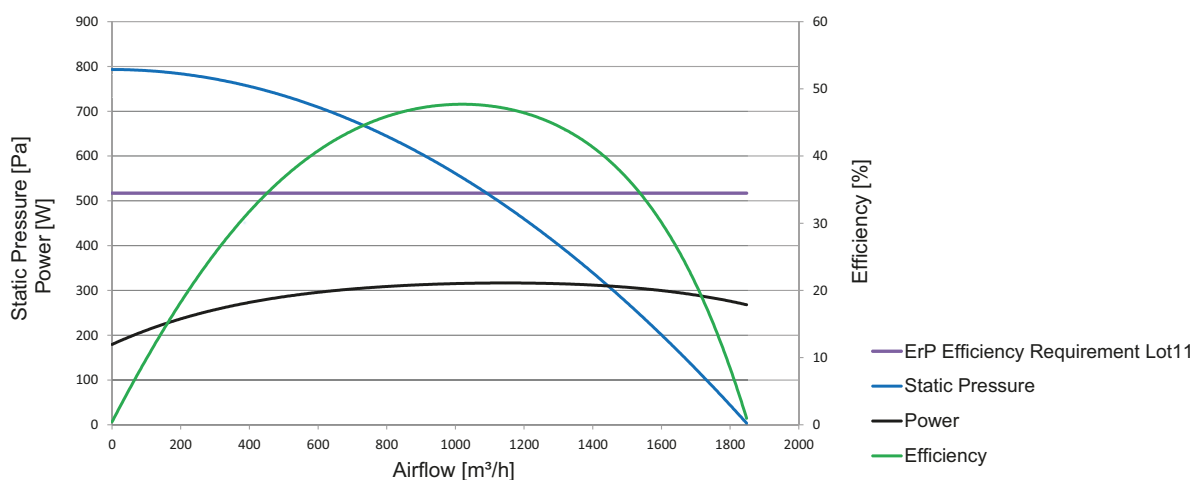


- High efficiency radial back blade fans with robust galvanized steel frame and aluminum profile supports.
- "Plug-fans" prepared to connect directly to ventilation equipment or various applications according to customer needs, facilitating the assembly on the equipment.
- Front fixing panel with integrated suction ring, custom OEM on request.
- Direct connections to the fan.
- 0-100% variable speed EC fan through electronic regulation via 0-10V signal.

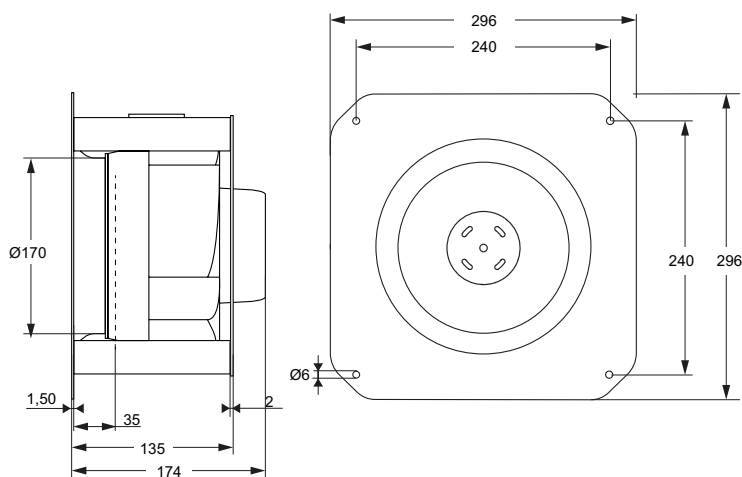
Specifications

| Model | Tension V | Maximum Airflow m³/h | Power kW | Intensity A | Speed rpm | Maximum Pressure Pa |
|----------------|--------------|----------------------------|-------------|----------------|--------------|---------------------------|
| RMEC 250x50 V8 | 1x230V | 1850 | 0,312 | 1,35 | 3410 | 780 |

Performance curve

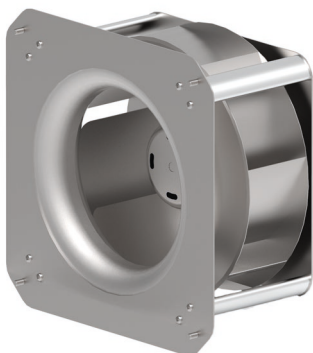


Dimensions





Characteristics

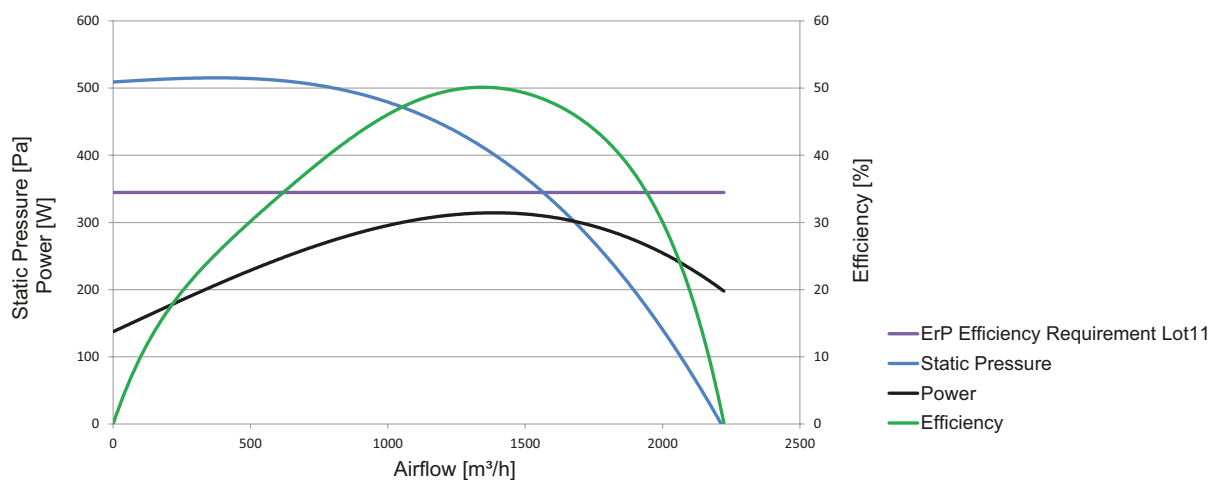


- High efficiency radial back blade fans with robust galvanized steel frame and aluminum profile supports.
- “Plug-fans” prepared to connect directly to ventilation equipment or various applications according to customer needs, facilitating the assembly on the equipment.
- Front fixing panel with integrated suction ring, custom OEM on request.
- Direct connections to the fan.
- 0-100% variable speed EC fan through electronic regulation via 0-10V signal.

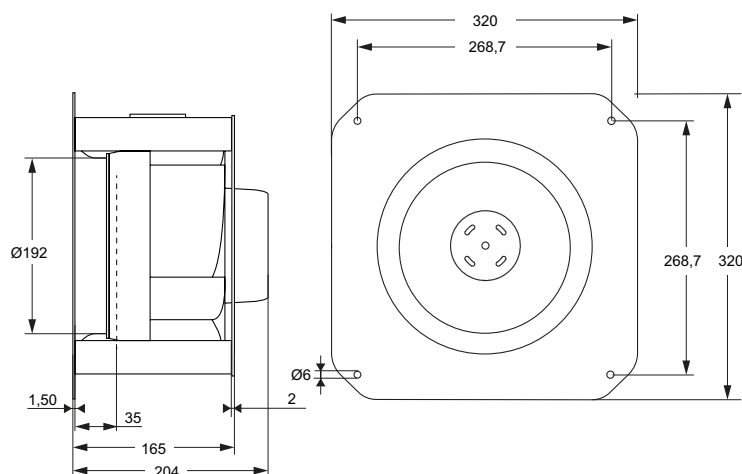
Specifications

| Model | Tension V | Maximum Airflow m³/h | Power kW | Intensity A | Speed rpm | Maximum Pressure Pa |
|----------------|--------------|----------------------------|-------------|----------------|--------------|---------------------------|
| RMEC 280x80 V8 | 1x230V | 2220 | 0,311 | 1,33 | 2310 | 520 |

Performance curve

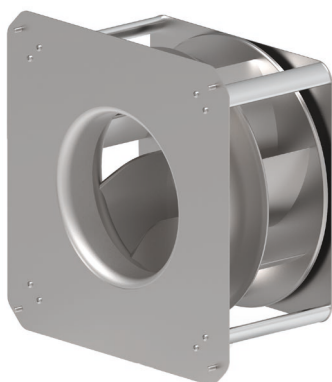


Dimensions





Characteristics

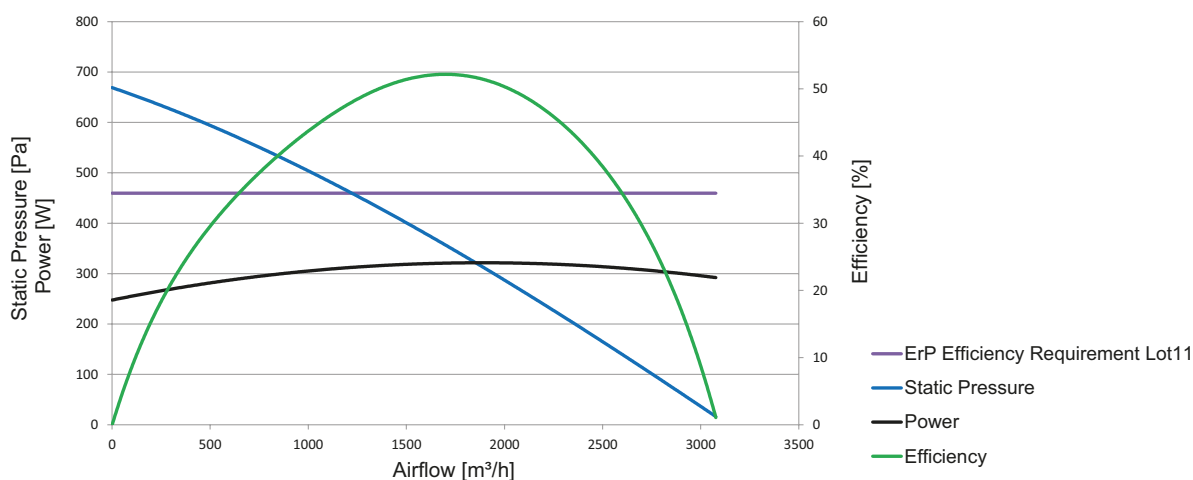


- High efficiency radial back blade fans with robust galvanized steel frame and aluminum profile supports.
- "Plug-fans" prepared to connect directly to ventilation equipment or various applications according to customer needs, facilitating the assembly on the equipment.
- Front fixing panel with integrated suction ring, custom OEM on request.
- Direct connections to the fan.
- 0-100% variable speed EC fan through electronic regulation via 0-10V signal.

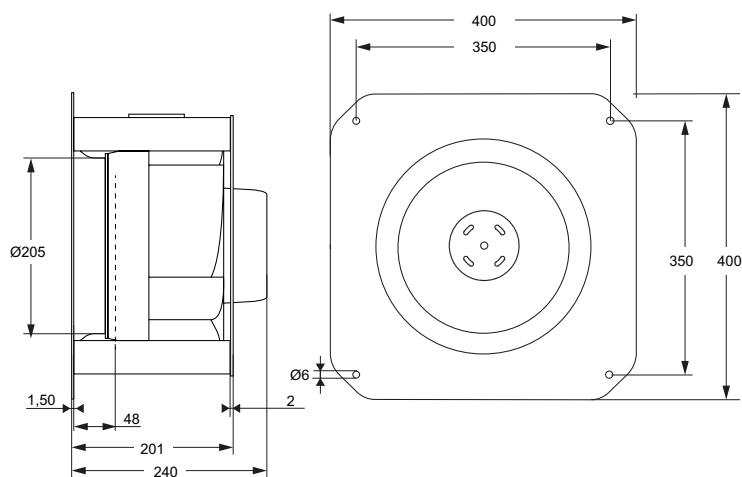
Specifications

| Model | Tension V | Maximum Airflow m³/h | Power kW | Intensity A | Speed rpm | Maximum Pressure Pa |
|----------------|--------------|----------------------------|-------------|----------------|--------------|---------------------------|
| RMEC 337x88 V8 | 1x230V | 3080 | 0,314 | 1,34 | 2230 | 680 |

Performance curve



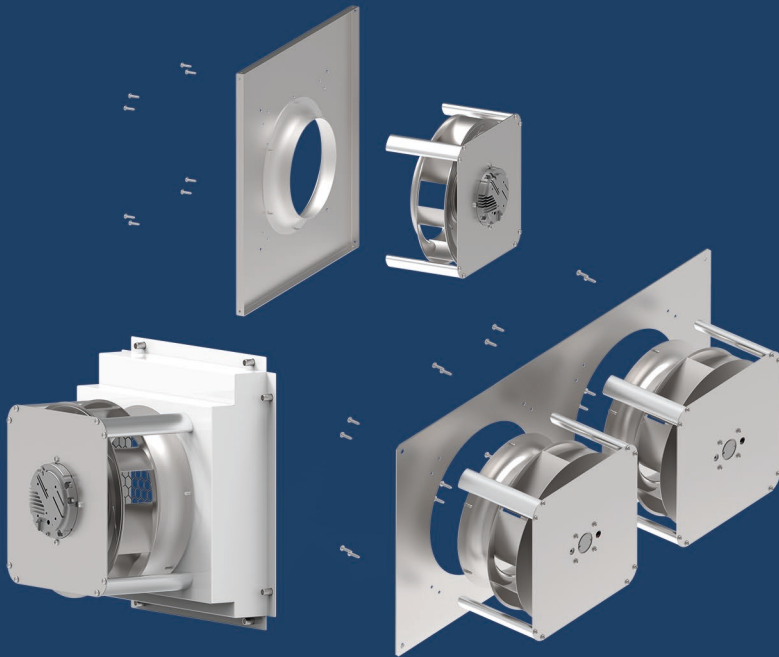
Dimensions



CUSTOM-MADE FRONT PANEL

Fixing front panel with integrated suction ring, customised according to the needs of the project. It is also possible to deliver the module without the front panel to be integrated into the equipment.

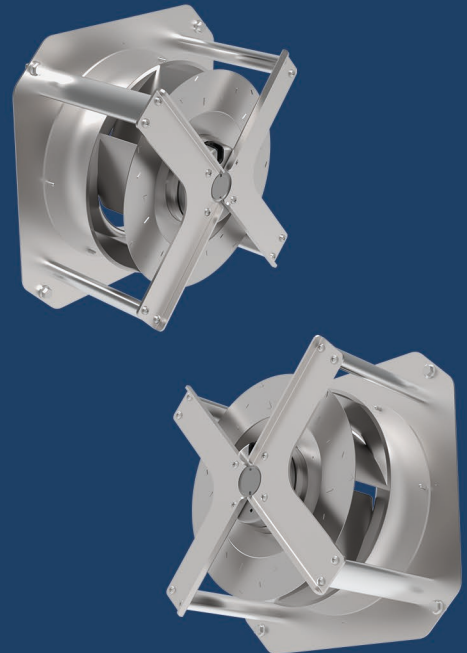
The OEM equipment can incorporate a single module or several modules.



REAR BRACKET IN CROSS

Compact cross-shaped bracket to replace the rear panel. The flow rate of the equipment is the same as the standard panel.

Can be ordered as an optional accessory.

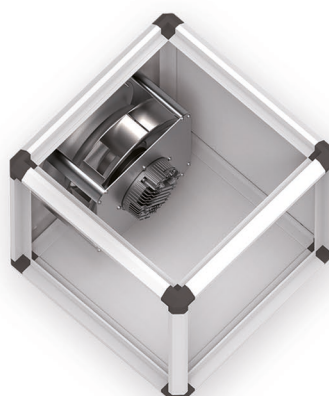


APPLICATIONS

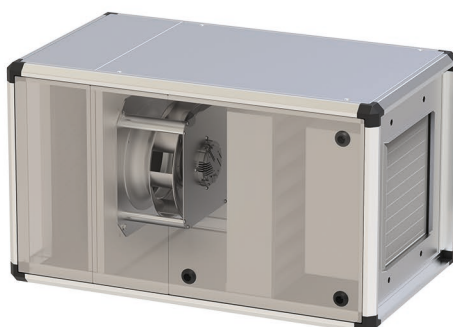
The ventilation modules can be used in a variety of applications in ventilation, filtration or EC FanGrids.



EC FanGrid



Ventilation box



Filtration box

*Vertical portable
filtration box*



Conca de Barberà, 6 - Pol. Ind. Pla de la Bruguera
E-08211 Castellar del Vallès (Barcelona) Spain
☎ + 34 93 715 99 88
airtechnics@airtechnics.com

www.airtechnics.com

NOFCAT3481 2023R2 (06/03)
We reserve the right to modify design and specifications without prior notice.

