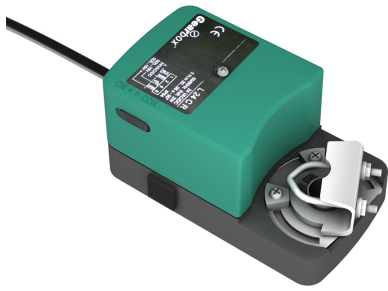




Characteristics



- Directional rotation selector
- Universal flange for shifts Ø6 to Ø16 mm and square from 5 to 12 mm
- Models L...C of quick running
- For shutters till 1m², depending on manufacturer

Specifications

Model	Torque (Nm)	Tension (V (50 Hz))	Control	Running Time 90° (s)	Auxiliar Contact	Feedback signal (kOhm)
L 230	5	230AC	T/N	80 -150	-	-
L 230 C	5	230AC	T/N	20 - 35	-	-
L 230 CP	5	230AC	T/N	20 - 35	-	10
L 230 CS	5	230AC	T/N	20 - 35	1x3A	-
L 230 P	5	230AC	T/N	80 -150	-	10
L 230 S	5	230AC	T/N	80 -150	1x3A	-
L 24	5	24AC/DC	T/N, 3P	80 -150	-	-
L 24 C	5	24AC/DC	T/N, 3P	20 - 35	-	-
L 24 CP	5	24AC/DC	T/N, 3P	20 - 35	-	10
L 24 CR	5	24DC	0,,10V	20 - 35	-	-
L 24 CS	5	24AC/DC	T/N, 3P	20 - 35	1x3A	-
L 24 P	5	24AC/DC	T/N, 3P	80 -150	-	10
L 24 R	5	24DC	0,,10V	80 -150	-	-
L 24 S	5	24AC/DC	T/N, 3P	80 -150	1x3A	-