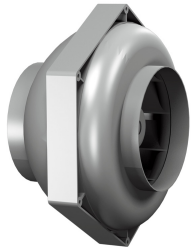




Characteristics



- External rotor motor protected against thermal contact
- 0-100% variable speed
- Low noise level
- Backward curved impellers in accordance to DIN 1940, class G 2,5
- Non inflammable plastic casing of high resistance to impacts
- Octagonal design for easy installation
- EX reference = ATEX

Specifications

Model	Tension (V (50 Hz))	Current fans (A)	Power (W)	Speed (rpm)	Air Flow (m³/h)	Maximum Pressure (Pa)	ERP Normative
RS 100 L	1x230V	0,3	65	2480	260	340	ERP 2016
RS 125 L*	1x230V	0,3	65	2415	340	320	No ERP
RS 125 L.3BF	1x230V	0,27	60	2380	330	343	ERP 2016
RS 150	1x230V	0,3	70	2400	440	325	ERP 2016
RS 160	1x230V	0,3	70	2400	440	325	ERP 2016
RS 160 L	1x230V	0,49	115	2440	660	420	ERP 2016
RS 200	1x230V	0,5	115	2395	780	430	ERP 2016
RS 200 L*	1x230V	0,7	160	2540	870	465	No ERP
RS 250	1x230V	0,5	115	2450	910	450	ERP 2016
RS 250 L*	1x230V	0,65	160	2560	980	510	No ERP
RS 315*	1x230V	0,95	220	2540	1285	535	No ERP
RS 315 L*	1x230V	1,3	300	2390	1770	720	No ERP
RS 315 M.3EF	1x230V	0,85	200	2670	1240	580	ERP 2018
RS 315.3EF	1x230V	0,75	170	2690	1080	610	ERP 2018

* Only available outside the EU, inside the EU valid as a spare part