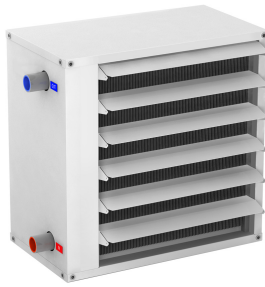




Characteristics

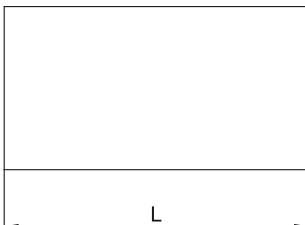
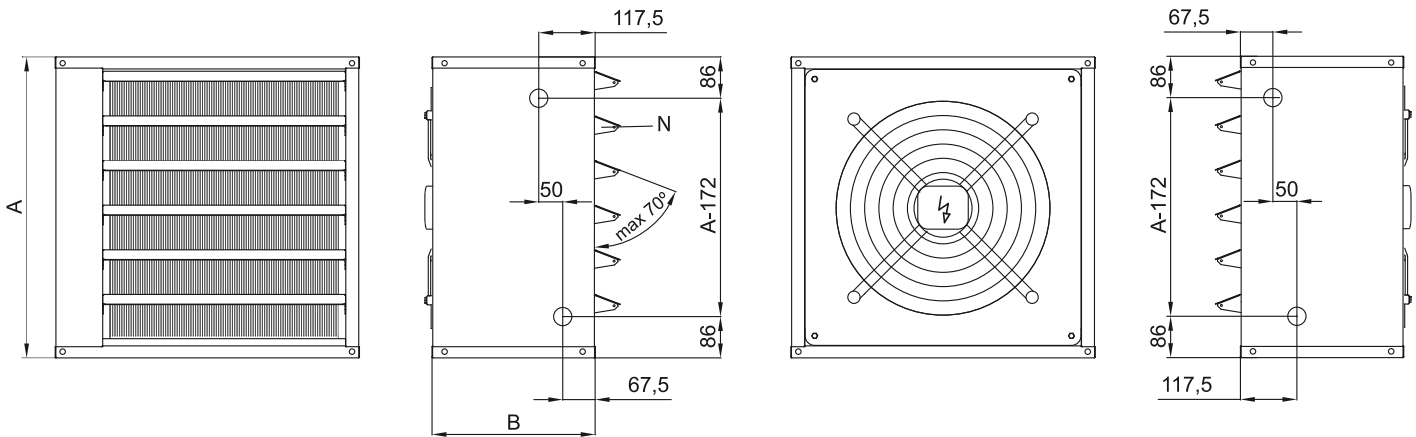


- Compact and functional fan heater designed for heating large spaces such as industrial buildings, factories, warehouses, workshops or venues
- Self-supporting casing construction made of galvanised plated steel, finished in structural epoxy-polyester RAL 9016 as standard. Other colours or costumisation are available on request
- Louvered diffuser adjustable from 0 to 70°
- Wall mounting
- High efficiency and low noise axial fan driven with external rotor motor, single phase 230V/50Hz. Optionally three phase 400V/50Hz
- 2 fan power are available
- Water coil 2 or 3 rows (P86/P64) with male connections 2x1/2"
- Different control options to fulfill any customer request: 5 ventilation speed, manual or automatic functioning, remote control, with telephone cable and fast connectors (Plug and Play), interface to connect to BMS, etc.

Specifications

Model	Nominal Airflow (m ³ /h)	Heating Capacity 80/60°C (kW)	Heating Capacity 60/40°C (kW)	Air Throw (m)	Fan Power 230V-50Hz (kW)	Fan Current 230V-50Hz (A)
BAS 350 P64	2500	-	12,08	8,5	0,22	0,95
BAS 350 P86	2500	14,01	-	8,5	0,22	0,95
BAS 450 P64	4500	-	20,32	12	0,34	1,48
BAS 450 P86	4500	24,38	-	12	0,34	1,48

Dimensions



	L	A	B	N (Lamellas)
Aerotherm Basic 350	544	537	330	5
Aerotherm Basic 450	634	627	340	6