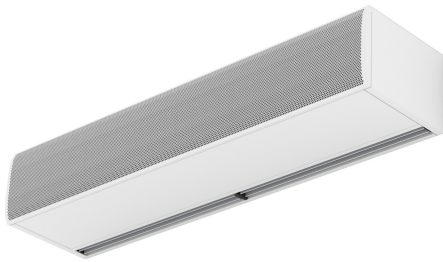


Characteristics



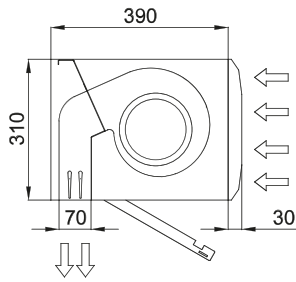
- Specially designed for insects control at entranceways such as food establishments and industry, hospitals or clean zones.
- High velocity air barrier to prevent flying insects from entering a building.
- Up to 2,3 meters height doors according to NSF 37 standard.
- Self-supporting casing construction made of galvanized steel plate, finished in structural epoxy-polyester painting white colour RAL9016 as standard. Other colours or stainless steel are available on request.
- Large faceted inlet grille avoiding intensive maintenance.
- Anodized aluminium outlet vanes, airfoil shaped, adjustable from 0 to 15° each side.
- EC Double-inlet centrifugal fans driven by an external rotor motor and low noise level, with very low consumption efficiency fans.
- "A" type without heating, air only.
- Advanced Plug&Play control. Includes: Advanced PRO control with LCD display and integrated thermostat, door contact, 7m and remote control. With integrated functions: door delay (configurable); interface mode; operation, alarm and maintenance warning signals; and multiple digital inputs that modify the air curtain's operation.
- Includes protective varnish for the electronic board and control.
- Optional:
 - Auxiliary temperature sensors that improve air curtain control and increase energy savings.
 - Clever PRO intelligent control (automatic, programmable, ModBus via PLC, timer, etc.) with an additional temperature sensor.

Specifications

50Hz

Model	Unheated	
	(m ³ /h)	(m)
FLY KSB 1000 A	2.3	
FLY KSB 1500 A	2.3	
FLY KSB 2000 A	2.3	
FLY KSB 2500 A	2.3	
FLY KSB 3000 A	2.3	

Dimensions



L	A	B
1000	920	-
1500	1420	710
2000	1920	960
2500	2420	1210
3000	2920	1460

