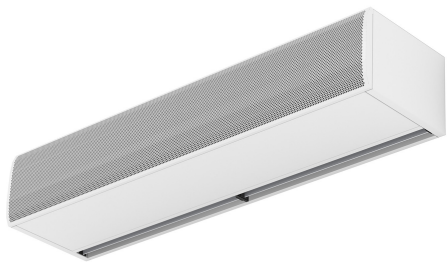




Characteristics



- Specially designed to be installed in doors of cold stores.
- Self-supporting casing construction made of galvanized steel plate, finished in structural epoxy-polyester painting white colour RAL9016 as standard. Other colours or stainless steel are available on request.
- Large faceted inlet grille avoiding intensive maintenance. Also available with flat micro-perforated inlet grille, more elegant for commercial doors where heating is not needed.
- Anodized aluminium outlet vanes, airfoil shaped, adjustable from 0 to 15° each side.
- EC Double-inlet centrifugal fans driven by an external rotor motor and low noise level, with very low consumption efficiency fans.
- “A” type without heating, air only.
- Advanced Plug&Play control. Includes: Advanced PRO control with LCD display and integrated thermostat, door contact, 7m RJ11 cable and remote control. Optional: intelligent Clever Pro Control (automatic, programmable, ModBus for PKC, timer, etc.)
- Includes varnishing on the PCB to protect it from corrosion.

Specifications

50Hz

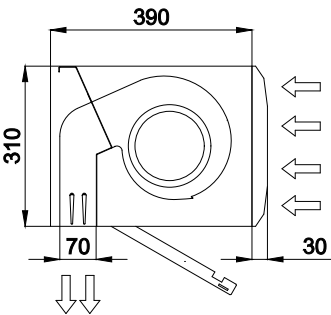
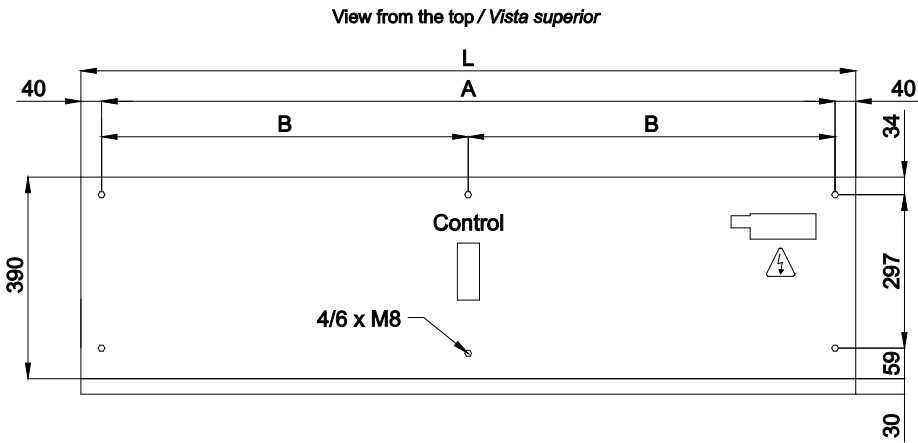
Model	Unheated	
	Nominal Airflow (m³/h)	Recommended Installation Range (m)
KSB 1000 A	3060	3,5-5
KSB 1500 A	4080	3,5-5
KSB 2000 A	6120	3,5-5
KSB 2500 A	7140	3,5-5
KSB 3000 A	8160	3,5-5

60Hz

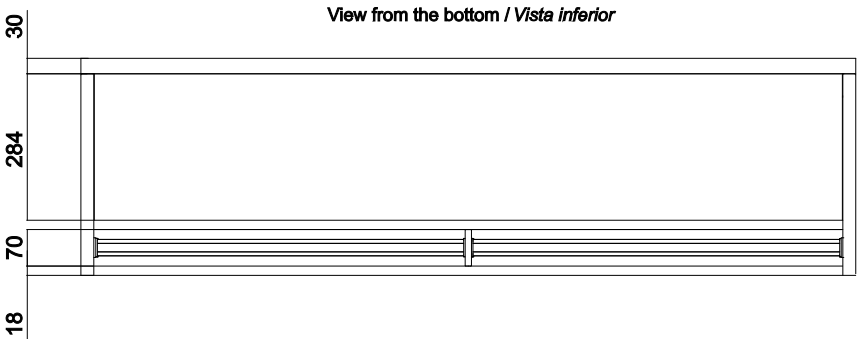
Model	Unheated	
	Nominal Airflow (m³/h)	Recommended Installation Range (m)
KSB 1000 A	3060	3,5-5
KSB 1500 A	4080	3,5-5
KSB 2000 A	6120	3,5-5
KSB 2500 A	7140	3,5-5
KSB 3000 A	8160	3,5-5



Dimensions



Lateral View / Vista Lateral



L	A	B
1000	920	-
1500	1420	710
2000	1920	960
2500	2420	1210
3000	2920	1460