

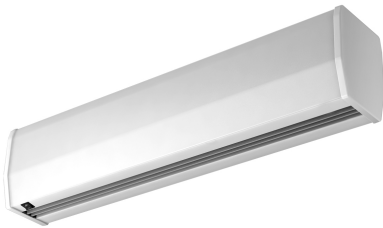


Characteristics

The Minibel air curtain is suitable for installations where the opening of a small door or window is required while maintaining the air conditioning inside. Thus, it is the ideal complement to maintain the temperature in establishments such as kiosks, service windows such as toll booths, fast food or petrol stations. In addition, you can select the "E" model, which includes heating.

This is the economical air curtain that will perfectly meet your climate and comfort needs at work.

Also can be used as an electrical over door heater for higher entrances in order to provide a warm welcome.



- Self-supporting casing construction made of galvanized steel plate, finished in structural epoxy-polyester painting white colour RAL9016 as standard. Other colours are available on request.
- Anodized aluminium outlet vanes, airfoil shaped.
- Compact axial fans, low noise level.
- “E” type with electrical shielded element. “A” type without heating, air only.
- Integrated switch for ventilation and heating control.
- Cable connection 1,5m length, integrated.
- Wall support included.

Specifications

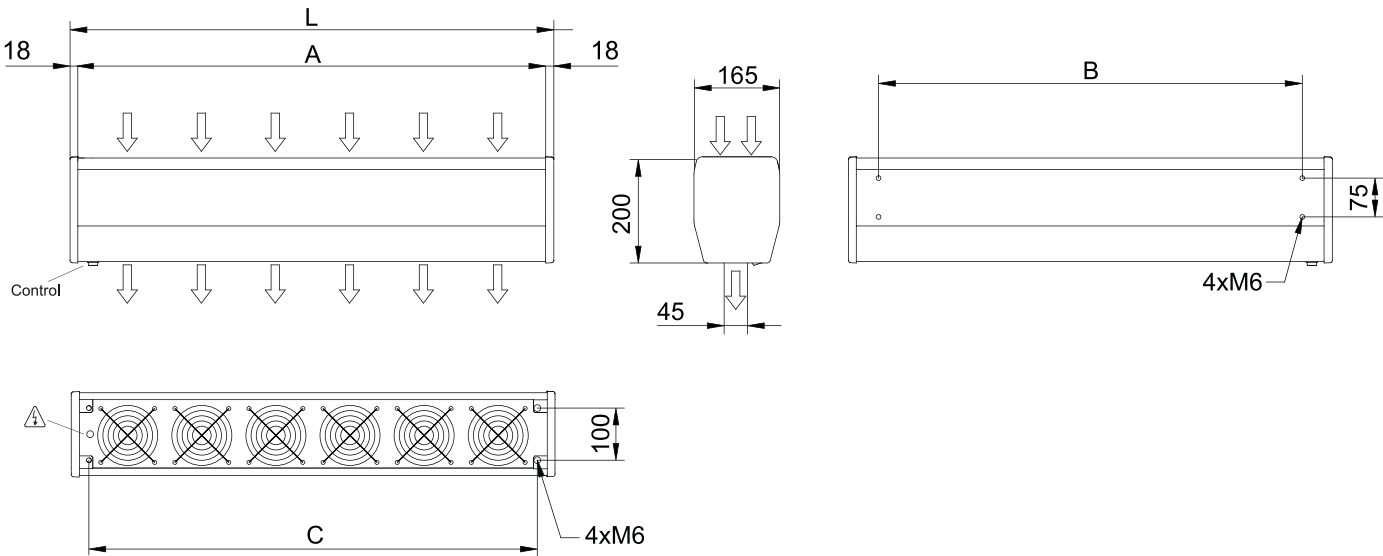
50Hz

Unheated			
Model	Nominal Airflow (m³/h)	Recommended Installation Range (m)	
MIN 600 A	420	1,8	
MIN 900 A	630	1,8	

Electrical Heating			
Model	Nominal Airflow (m³/h)	Electrical Heating Capacity 230Vx1 (kW)	Recommended Installation Range (m)
MIN 600 E230	420	2,5	1,8
MIN 900 E230	630	3,2	1,8



Dimensions



	L	A	B	C
MIN 600	636	600	520	566
MIN 900	936	900	820	866