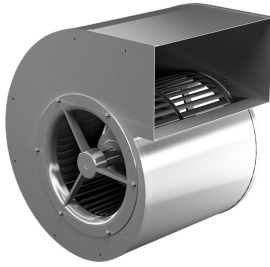




Characteristics



- The speed is automatically adaptable to pressure variations of the system (gliding characteristic)
- External rotor motor protected through thermal contact
- Variable speed 0-100% through electronic controller or transformer
- Forward curved impellers balanced statically and dynamically according ISO 1940
- Extremely low noise level
- Specially indicated for bag filters equipments and laminar flow installations

Specifications

| Model | Tension (V (50 Hz)) | Current fans (A) | Power fans (kW) | Speed (rpm) | Air Flow (m³/h) | Maximum Pressure (Pa) |
|------------------|---------------------|------------------|-----------------|-------------|-----------------|-----------------------|
| DRAD 240-4 | 3x400V | 1 | 0,47 | 1150 | 2000 | 390 |
| DRAD 249-4 | 3x400V | 1,4 | 0,7 | 1220 | 2700 | 440 |
| DRAD 249-4L | 3x400V | 2,05 | 1,08 | 1140 | 4400 | 420 |
| DRAD 251-4 | 3x400V | 1,5 | 0,75 | 1210 | 2900 | 530 |
| DRAD 251-4L | 3x400V | 2,05 | 1,08 | 1130 | 4500 | 510 |
| DRAD 279-4 | 3x400V | 3,45 | 1,8 | 1180 | 5900 | 590 |
| DRAD 281-4 | 3x400V | 3,6 | 1,9 | 1140 | 6700 | 640 |
| DRAD 282-4 | 3x400V | 3,1 | 2 | 1090 | 6400 | 650 |
| DRAD 314-4 | 3x400V | 4,6 | 2,8 | 1185 | 7600 | 750 |
| DRAD 316-4 | 3x400V | 3,9 | 2,4 | 1050 | 5500 | 790 |
| DRAD 316-4L IP10 | 3x400V | 7 | 4,4 | 1090 | 9300 | 900 |
| DRAD 356-4 | 3x400V | 6,9 | 4,2 | 1230 | 9400 | 1050 |
| DRAD 356-4K | 3x400V | 5,2 | 3,2 | 1020 | 8100 | 1000 |
| DRAE 181-4 | 1x230V | 0,85 | 0,19 | 1110 | 1100 | 230 |
| DRAE 181-4L | 1x230V | 1,2 | 0,28 | 1110 | 1550 | 240 |
| DRAE 195-4 | 1x230V | 1,4 | 0,3 | 1020 | 1850 | 280 |
| DRAE 195-4A | 1x230V | 1,7 | 0,41 | 1170 | 2150 | 280 |
| DRAE 195-4L | 1x230V | 1,8 | 0,42 | 1140 | 2350 | 300 |
| DRAE 240-4 | 1x230V | 2,2 | 0,5 | 950 | 2000 | 380 |
| DRAE 240-4L | 1x230V | 3,1 | 0,68 | 950 | 2400 | 380 |
| DRAE 249-4 | 1x230V | 3,4 | 0,82 | 1100 | 2700 | 430 |
| DRAE 249-4K | 1x230V | 2,95 | 0,65 | 960 | 2500 | 410 |
| DRAE 249-4L | 1x230V | 4,55 | 1 | 1110 | 4000 | 410 |
| DRAE 251-4 | 1x230V | 3,5 | 0,8 | 1160 | 3100 | 490 |
| DRAE 251-4K | 1x230V | 2,9 | 0,64 | 890 | 3000 | 460 |
| DRAE 251-4L | 1x230V | 5 | 1,17 | 1170 | 4400 | 500 |
| DRAE 279-4 | 1x230V | 6,5 | 1,55 | 1110 | 4500 | 580 |
| DRAE 281-4 | 1x230V | 6,5 | 1,55 | 1110 | 4700 | 620 |
| DRAE 282-4 | 1x230V | 7,7 | 1,9 | 1250 | 5400 | 660 |