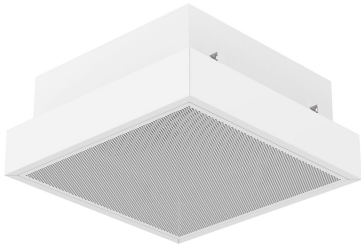


Characteristics

Air diffuser with fan prepared to hold a high efficiency HEPA and ULPA absolute filter, with an efficiency of 99.95%. On request, it can also be prepared with a module for a G4 efficiency pre-filter, which retains particles larger than 0.01 millimetre.

It can be installed either suspended, hanging from the ceiling, or in a false ceiling for systems installed in a "T" shape. The diffuser is perforated to emit a soft, stratified air stream.

It provides the room with air purified and clean of bacteria, viruses, dust, pollen or other elements that adulterate the quality and sterility of the environment.



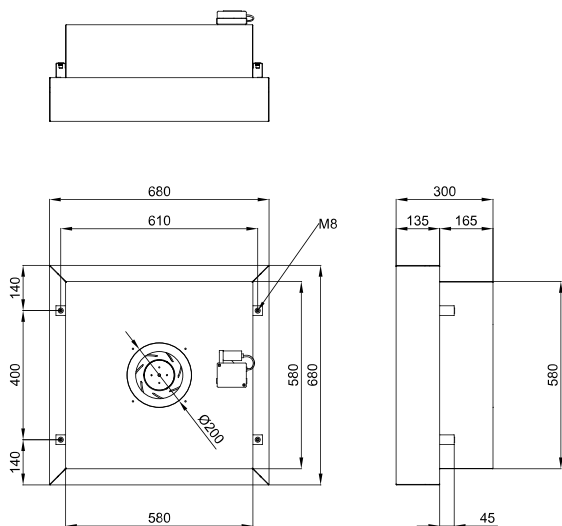
- Ventilation unit prepared to house absolute filters type minipleat with high efficiency from 99.95% to 99.9995%, corresponding to HEPA H13, H14 and ULPA U15 according to EN1822 standard. Optional: G4 efficiency prefiltration module according to EN779 standard.
- Perforated diffuser for laminar flow and RAL 9016 white painted steel surround. Other finishes such as AISI304 stainless steel are available on request.
- Backward blade fan with high efficiency and very low consumption external rotor EC motor, electronically adjustable 0-100% via 0-10V.
- Suitable for suspended installation or adaptable to false ceilings in the "T" system.

Specifications

Model	Dimensions (mm)	Filter Dimensions (mm)	Tension (V (50 Hz))	Current fans (A)	Air Flow (m ³ /h)
DIF-VENT 6/12 EC	680x1290x325	610x1220x68	1x230V	2,2	1200
DIF-VENT 6/12 EC NX	680x1290x325	610x1220x68	1x230V	2,2	1200
DIF-VENT 6/6 EC	680x680x325	610x610x68	1x230V	1,1	600
DIF-VENT 6/6 EC NX	680x680x325	610x610x68	1x230V	1,1	600

Dimensions

DifVent 6/6



DifVent 6/12

