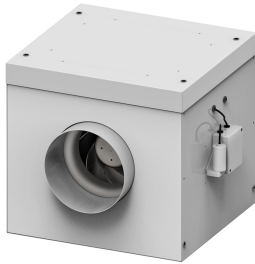




Characteristics

Ventilation box with low noise emission thanks to 5 cm sound insulation. Its circular connections make it easy to adapt to standard duct installations, making it ideal for renovating ventilation systems.

The generously sized flap facilitates maintenance and gives the technician plenty of room to manoeuvre. This product is available in three models, depending on the turbine: you can find it with jet, double suction action or with a fan with an energy-saving motor. In addition, the fan speed is fully adjustable.



- Ventilation unit with 50 mm thick of sound insulation
- External rotor motor protected through thermal contact 0-100% variable speed
- Connection box IP54 incorporated
- Wide service door
- Circular connexions to standard ducts
- "ZA" Models with backward curved impeller
- "ZB" Models with double inlet forward curved impeller
- "EC" Models with EC motor of low consume

Specifications

Model	Tension (V (50 Hz))	Current fans (A)	Power (W)	Speed (rpm)	Air Flow (m ³ /h)	Maximum Pressure (Pa)
ZA 150	230Vx1	0,28	62	2510	415	250
ZA 150 EC	1x230V	0,54	80	3325	520	500
ZA 160	1x230V	0,28	62	2510	415	250
ZA 160 EC	1x230V	0,54	80	3125	520	500
ZA 200	1x230V	0,66	150	2480	800	265
ZA 200 EC	1x230V	0,75	113	2490	850	465
ZA 250	1x230V	0,83	190	2700	1275	505
ZA 315	1x230V	0,58	119	1375	1575	250
ZB - 200 EC	1x230V	0,57	84	1200	880	550
ZB 200 C1	1x230V	1	213	1465	750	420
ZB 200 C2	1x230V	1,24	283	1620	950	550
ZB 315 C1	1x230V	1,4	320	1080	1680	285
ZB 315 C2	1x230V	2,6	570	1240	3100	265